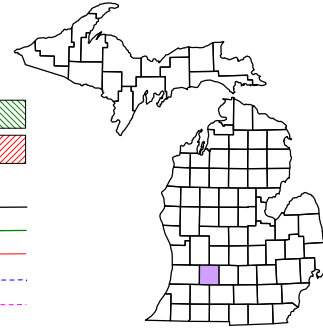


Johnstown Township  
T 1 N R 8 W  
Barry County  
Michigan

- Gap
- Overlap
- Address
- Real Property
- Personal Property
- Approved Split
- Plat
- Condominium



6	5	4	3	2	1
8	9	10	11	12	
18	17	16	15	14	13
19	20	21	22	23	24
30	29	28	27	26	25
31	32	33	34	35	36

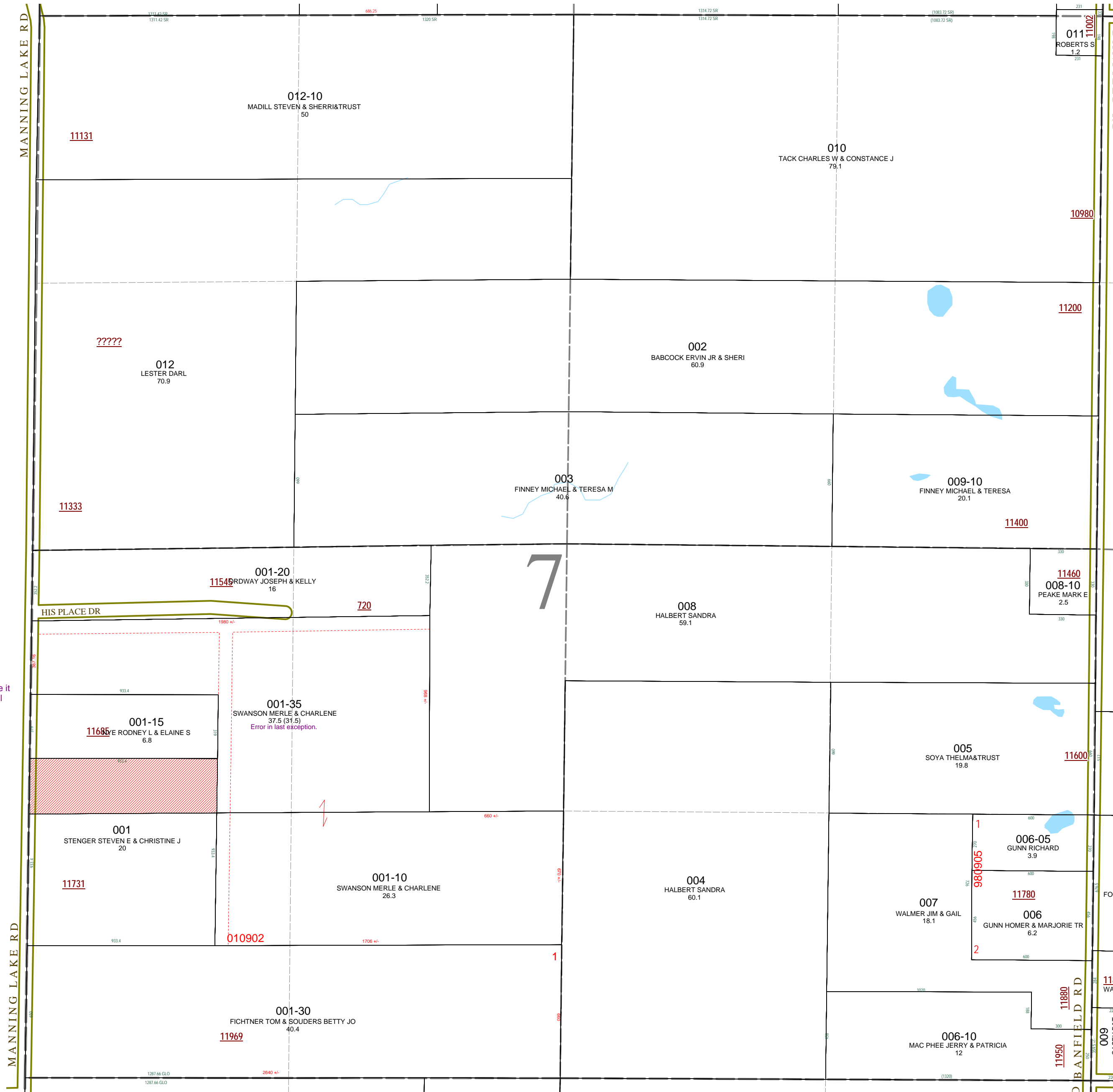
Section 7  
08-09-007-  
Scale 1" = 400'



April 1998  
Revised June 2000  
Revised May 2002  
Revised October 2003  
Revised November 2004  
Revised May 2006  
Revised May 2008

This tax map was compiled for tax administration purposes from county and township records. It does not represent a land survey.  
Barry County Land Information Services  
220 West State Street, Hastings MI 49058  
(269) 945-1292 or <http://www.barrycounty.org/>

All dimensions are from tax roll unless noted below.  
D = deduced M or S = surveyed  
SR = Surveyor's Record prior to 1915  
GLO = Government Land Office circa. 1830



08-09-007-001-35 overlaps 001-00 because it fails to exclude Stenger's parcel. See partial survey in mortgage R#1168078