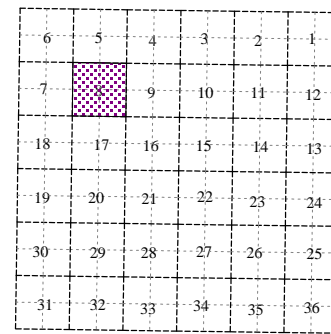
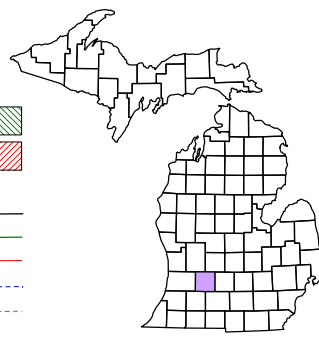


Johnstown Township  
T 1 N R 8 W  
Barry County  
Michigan

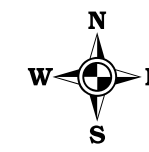
- Gap
- Overlap
- Address
- Real Property
- Personal Property
- Approved Split
- Plat
- Condominium



Section 8  
08-09-008-

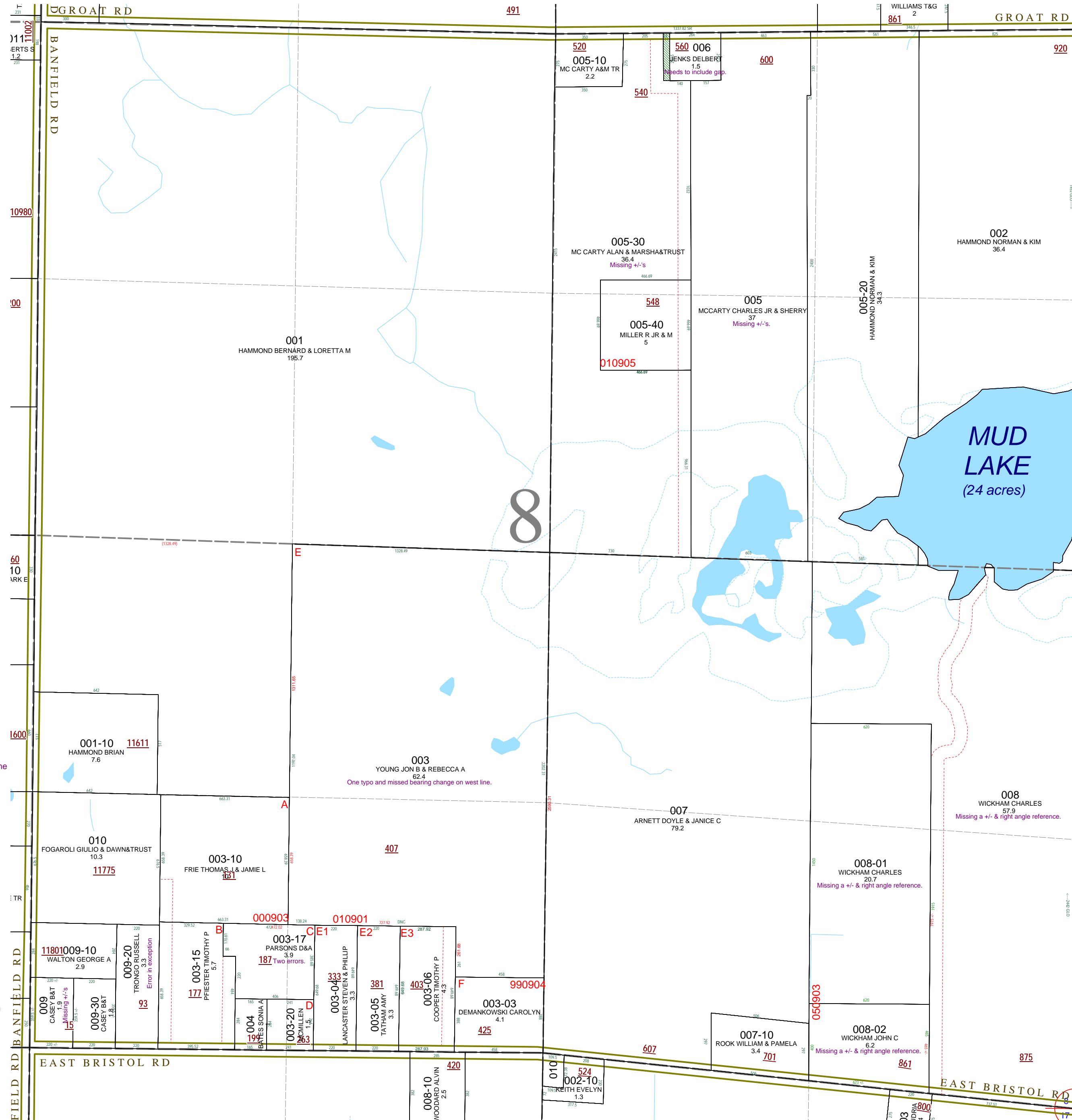
Scale 1" = 400'

This tax map was compiled for tax administration purposes from county and township records. It does not represent a land survey. Barry County Land Information Services 220 West State Street, Hastings MI 49058 (269) 945-1292 or <http://www.barrycounty.org/>



April 1998  
Revised June 2000  
Revised May 2002  
Revised October 2003  
Revised November 2004  
Revised May 2006  
Revised May 2008

All dimensions are from tax roll unless noted below.  
D = deeded M or S = surveyed  
SR = Surveyor's Record prior to 1915  
GLO = Government Land Office circa. 1830



08-09-008-06-00 should include a 33 foot wide gap to the west. See L.406-187.

08-09-008-005-30 is missing a couple of very important +/-'s. See R#1179275.

08-09-008-005-00 is missing a couple of very important +/-'s. See R#1149453.

08-09-008-003-00 does not close because of one typo and the bearings change on the west line. See parcel E split #010901.

08-09-008-003-17 has a couple of errors in the description and should read as parcel C split #000903 and as deeded in R#1049445.

08-09-008-009-20 is missing an "N" in the exception.

08-09-008-009-00 is not a true 220 feet in width (surveyed at 219.15 feet +/- in Split #000903) because the section is short east-west.

08-09-008-008-00 is missing its right angle reference and its +/-'s. See split #050903.

08-09-008-008-01 is missing its right angle reference and its +/-'s. See split #050903.

08-09-008-008-02 is missing its right angle reference and its +/-'s. See split #050903.