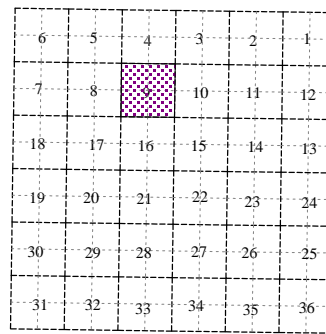
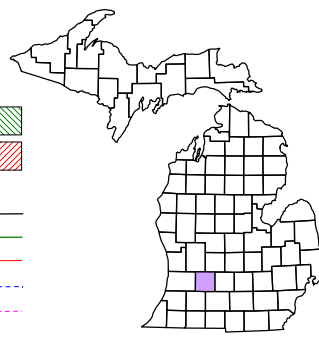


Johnstown Township  
T 1 N R 8 W  
Barry County  
Michigan

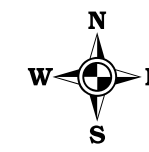
- Gap
- Overlap
- Address
- Real Property
- Personal Property
- Approved Split
- Plat
- Condominium



Section 9  
08-09-009-

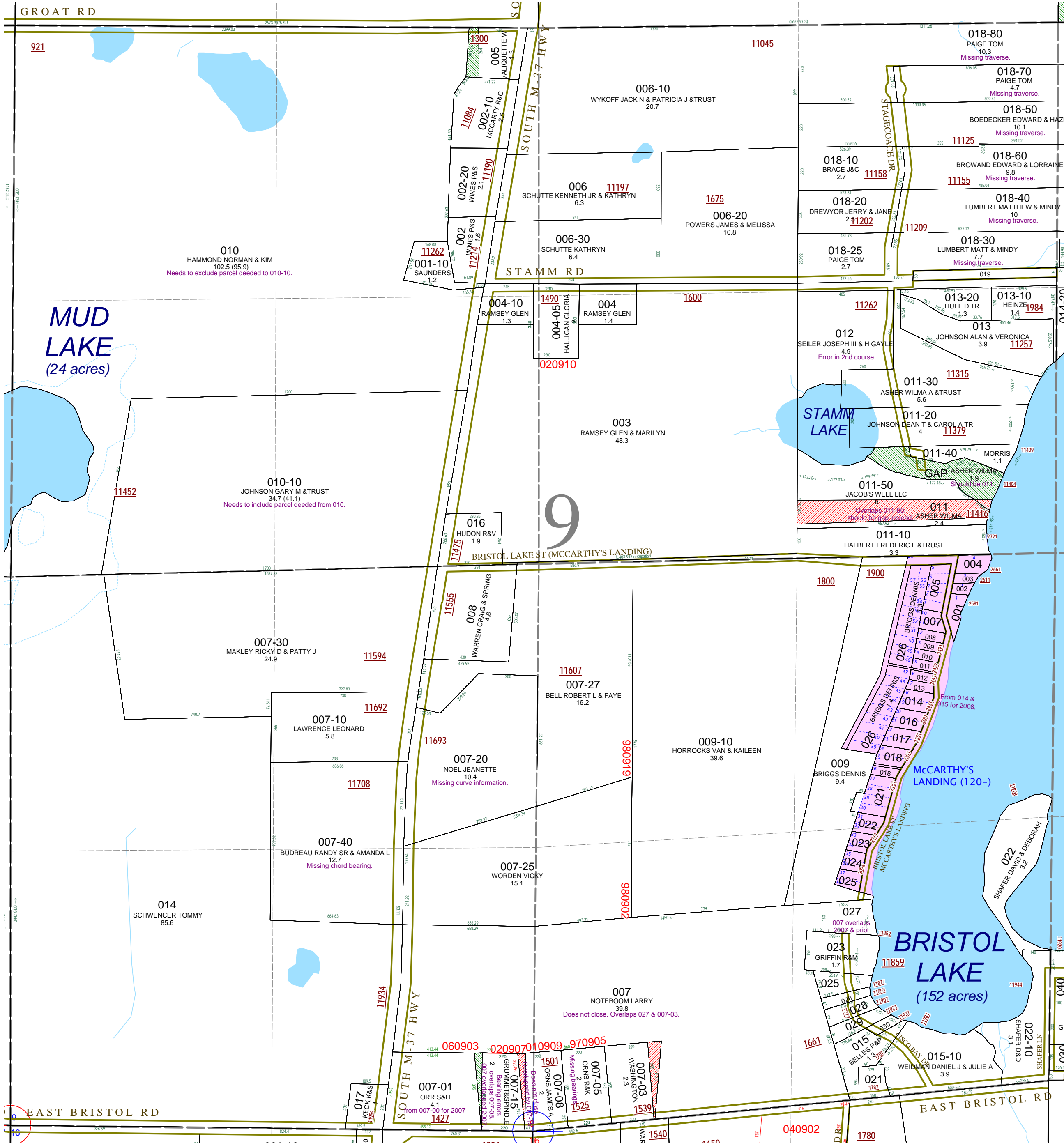
Scale 1" = 400'

This tax map was compiled for tax administration purposes from county and township records. It does not represent a land survey. Barry County Land Information Services 220 West State Street, Hastings MI 49058 (269) 945-1292 or <http://www.barrycounty.org/>



April 1998  
Revised June 2000  
Revised May 2002  
Revised October 2003  
Revised November 2004  
Revised May 2006  
Revised May 2008

All dimensions are from tax roll unless noted below.  
D = deeded M or S = surveyed  
SR = Surveyor's Record prior to 1915  
GLO = Government Land Office circa. 1830



08-09-009-010-00 needs to exclude riparian parcel deeded to Trehwella in L.702-24.

08-09-009-010-10 should include property to the lake deeded in L.702-24.

08-09-009-007-20 description is missing its curve and radius information and should read as LC in L.660-118 less R#1039834 & R#1027245.

08-09-009-007-40 is missing a chord bearing. See R#1036053.

08-09-009-007-15 overlaps 007-08, but has been surveyed by Brandt for split #060903.

08-09-009-018-80 needs to indicate that it has a traverse line or that it extends to waters edge. See R#1020269.

08-09-009-018-70 needs to indicate that it has a traverse line or that it extends to waters edge See R#1020269.

08-09-009-018-50 needs to indicate that it has a traverse line or that it extends to waters edge. See L.619-156.

08-09-009-018-60 needs to indicate that it has a traverse line or that it extends to waters edge. See L#200710300003624

08-09-009-018-40 needs to indicate that it has a traverse line or that it extends to waters edge. See R#1151715.

08-09-009-018-30 needs to indicate that it has a traverse line or that it extends to waters edge. See R#1159154.

08-09-009-012-00 has a direction error in second course; change "W 400 FT" to "S 400FT".

08-09-009-011-00 overlaps 011-50 because it is missing some courses to point of beginning and the entire lake traverse. Parcel should be described as remainder of sales which is actually the gap to the north

08-09-009-007-00 does not exclude deed to 007-03, and switches survey baselines halfway through description causing it to not close. See split #060903 with survey by Brandt for remainder

08-09-009-007-03 has a typo, change "401.154 FT" to "401.15FT"

08-09-009-007-05 is missing its course bearings and has been surveyed by Brandt for split #060903.

08-09-009-007-08 does not close in tax roll and has been surveyed by Brandt for split #060903.