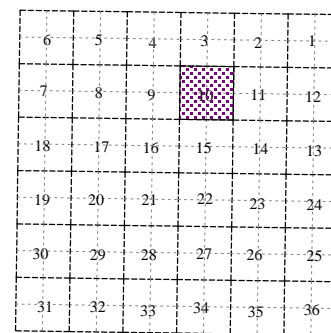
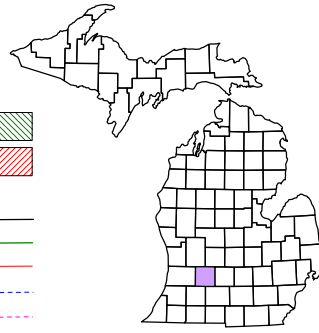
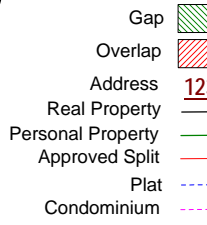
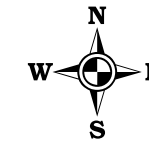


Johnstown Township
T 1 N R 8 W
Barry County
Michigan



Section 10
08-09-010-

Scale 1" = 400'



April 1998
 Revised June 2000
 Revised May 2002
 Revised October 2003
 Revised November 2004
 Revised May 2006
 Revised May 2008

This tax map was compiled for tax administration purposes from county and township records. It does not represent a land survey. Barry County Land Information Services 220 West State Street, Hastings MI 49058 (269) 945-1292 or <http://www.barrycounty.org/>

All dimensions are from tax roll unless noted below.
 D = deeded M or S = surveyed
 SR = Surveyor's Record prior to 1915
 GLO = Government Land Office circa. 1830

08-09-009-018-80 needs to indicate that it has a traverse line or that it extends to waters edge. See R#1020269.

08-09-009-018-70 needs to indicate that it has a traverse line or that it extends to waters edge See R#1020269.

08-09-009-018-50 needs to indicate that it has a traverse line or that it extends to waters edge. See L.619-156.

08-09-009-018-60 needs to indicate that it has a traverse line or that it extends to waters edge. See L#200710300003624

08-09-009-018-40 needs to indicate that it has a traverse line or that it extends to waters edge. See R#1151715.

08-09-009-018-30 needs to indicate that it has a traverse line or that it extends to waters edge. See R#1159154.

08-09-010-011-00 is missing two courses

08-09-010-023-00 should be described as two separate pieces because the surveys don't match up (181.84 vs 182 frontages and mismatched bearings).

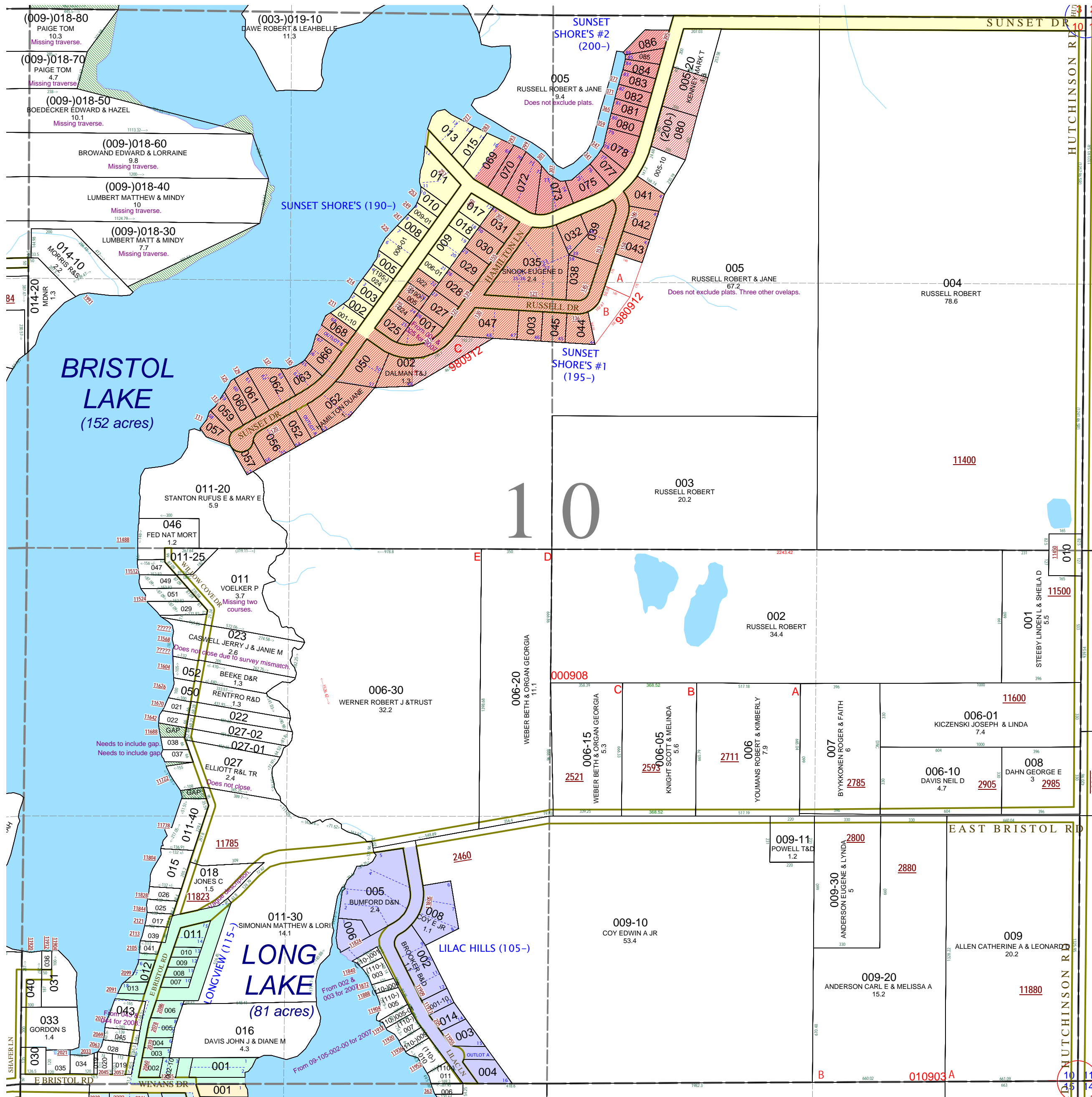
GAP owned by Robert Lepper who owns 038 and 027-01.

08-09-010-037-00 both "W" are actually S82°30'W which would close up a gap to the south. Bearings are from survey in the "unrecorded survey" drawer in abstract office.

08-09-010-038-00 both "W" are actually S82°30'W which would close up a gap to the south. Bearings are from survey in the "unrecorded survey" drawer in abstract office.

08-09-010-027-00 does not close in last description. See R#1156147.

08-09-010-018-00 has an awful description from deed. The surrounding properties have been surveyed for reference.



08-09-010-005-00 does not exclude Sunset Shore's #1 or #2 and needs to exclude 005-20, 200-008-00 & 195-002-00.