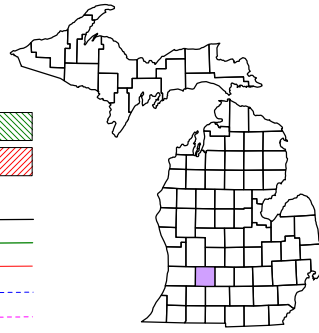


Johnstown Township
T 1 N R 8 W
Barry County
Michigan

- Gap
- Overlap
- Address
- Real Property
- Personal Property
- Approved Split
- Plat
- Condominium

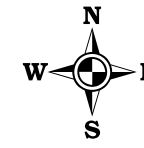


6	5	4	3	2	1
7	8	9	10	11	12
18	17	16	15	14	13
19	20	21	22	23	24
30	29	28	27	26	25
31	32	33	34	35	36

Section 12
08-09-012-

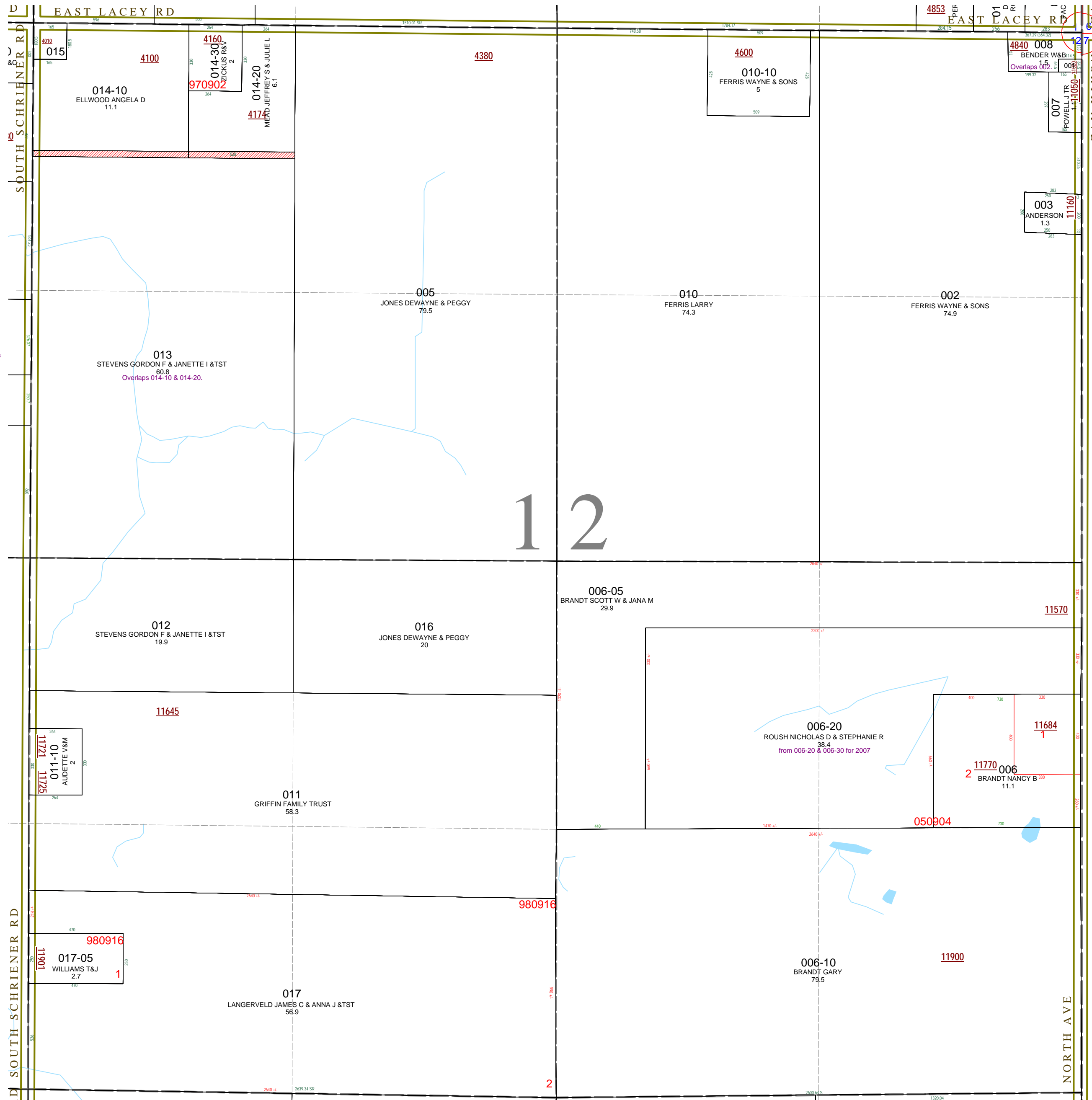
Scale 1" = 400'

This tax map was compiled for tax administration purposes from county and township records. It does not represent a land survey. Barry County Land Information Services 220 West State Street, Hastings MI 49058 (269) 945-1292 or <http://www.barrycounty.org/>



April 1998
 Revised June 2000
 Revised May 2002
 Revised October 2003
 Revised November 2006
 Revised May 2008

All dimensions are from tax roll unless noted below.
 D = deeded M or S = surveyed
 SR = Surveyor's Record prior to 1915
 GLO = Government Land Office circa. 1830



08-09-012-013-00 overlaps 014-10 & 014-20 should be described the second paragraph of deed R#1163922

08-09-012-008-00 overlaps 002 because it has an error in the first measure.