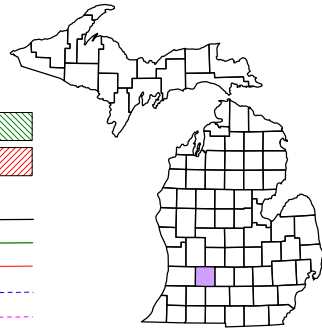


Johnstown Township
T 1 N R 8 W
Barry County
Michigan

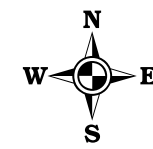
- Gap
- Overlap
- Address
- Real Property
- Personal Property
- Approved Split
- Plat
- Condominium



6	5	4	3	2	1
7	8	9	10	11	12
18	17	16	15	14	13
19	20	21	22	23	24
30	29	28	27	26	25
31	32	33	34	35	36

Section 14
08-09-014-

Scale 1"= 400'



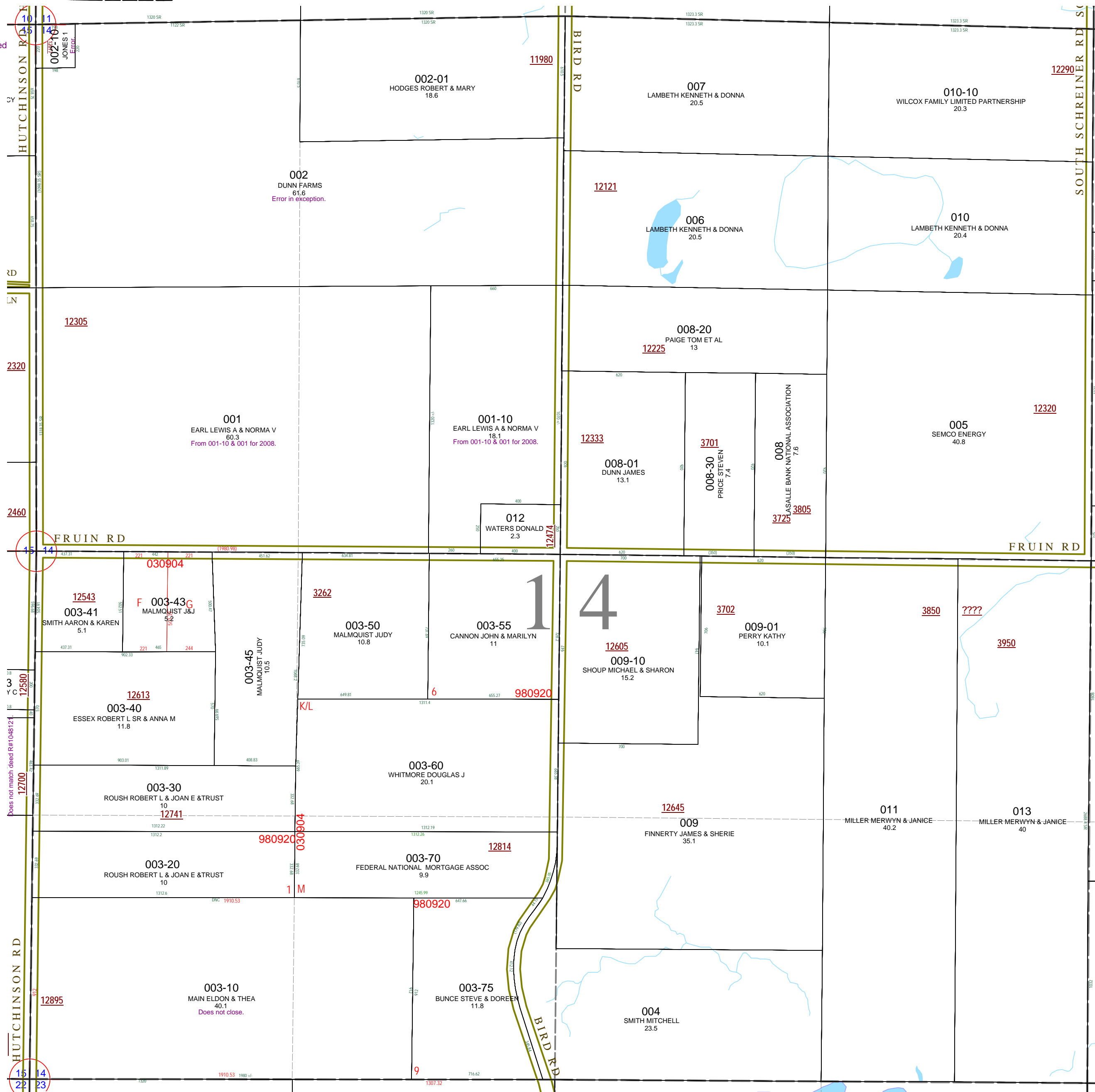
April 1998
 Revised June 2000
 Revised May 2002
 Revised October 2003
 Revised November 2004
 Revised May 2006
 Revised May 2008

This tax map was compiled for tax administration purposes from county and township records. It does not represent a land survey. Barry County Land Information Services 220 West State Street, Hastings MI 49058 (269) 945-1292 or <http://www.barrycounty.org/>

All dimensions are from tax roll unless noted below.
 D = deeded M or S = surveyed
 SR = Surveyor's Record prior to 1915
 GLO = Government Land Office circa. 1830

08-09-014-002-10 has its west and north switched around. See R#1149780.

08-09-014-002-00 has an error in last exception (west and north switched around).



08-09-014-003-10 does not close and needs to be described as deeded in L.692-721.