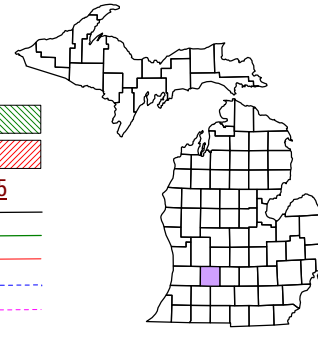


Johnstown Township
T 1 N R 8 W
Barry County
Michigan



6	5	4	3	2	1
7	8	9	10	11	12
18	17	16	15	14	13
19	20	21	22	23	24
30	29	28	27	26	25
31	32	33	34	35	36

SW 1/4 Section 15
08-09-015-
Scale 1" = 200'

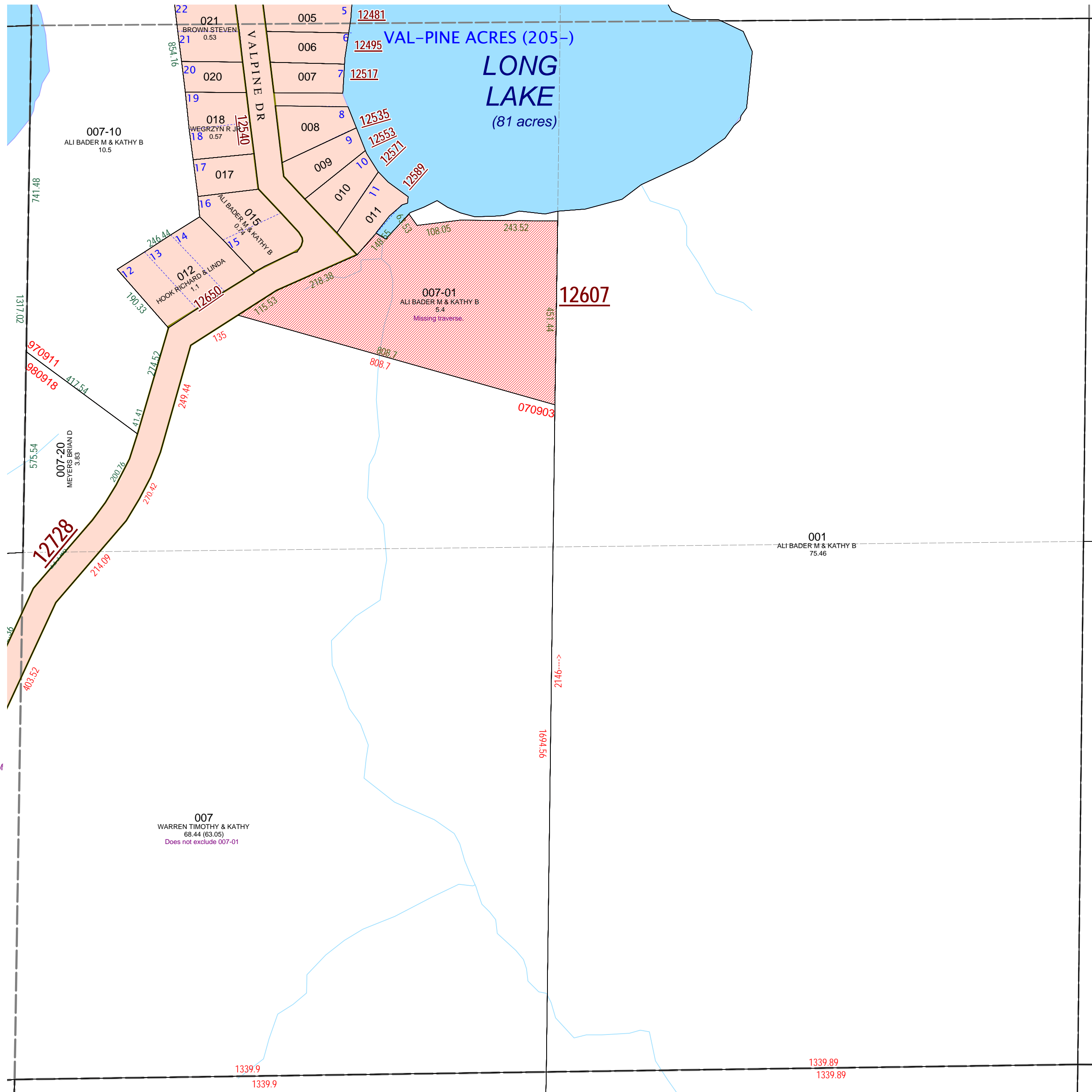


June 2000
Revised May 2002
Revised October 2003
Revised November 2004
Revised May 2006
Revised May 2008

This tax map was compiled for tax administration purposes from county and township records. It does not represent a land survey.
Barry County Land Information Services
220 West State Street, Hastings MI 49058
(269) 945-1292 or <http://www.barrycounty.org/>

All dimensions are from tax roll unless noted below.
D = deeded M or S = surveyed
SR = Surveyor's Record prior to 1915
GLO = Government Land Office circa. 1830

- Gap
- Overlap
- Address
- Real Property
- Personal Property
- Approved Split
- Plat
- Condominium



08-09-015-007-01 needs to indicate the traverse line or say that it extends to waters edge of lake. See R#1153564.

08-19-015-007-00 does not exclude 007-01 and should be described as surveyed for remainder of split #070903.