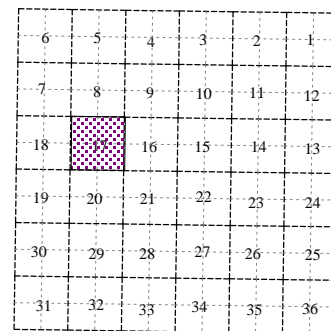
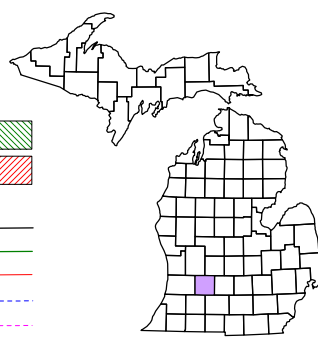


Johnstown Township
T 1 N R 8 W
Barry County
Michigan

- Gap
- Overlap
- Address
- Real Property
- Personal Property
- Approved Split
- Plat
- Condominium



Section 17
08-09-017-

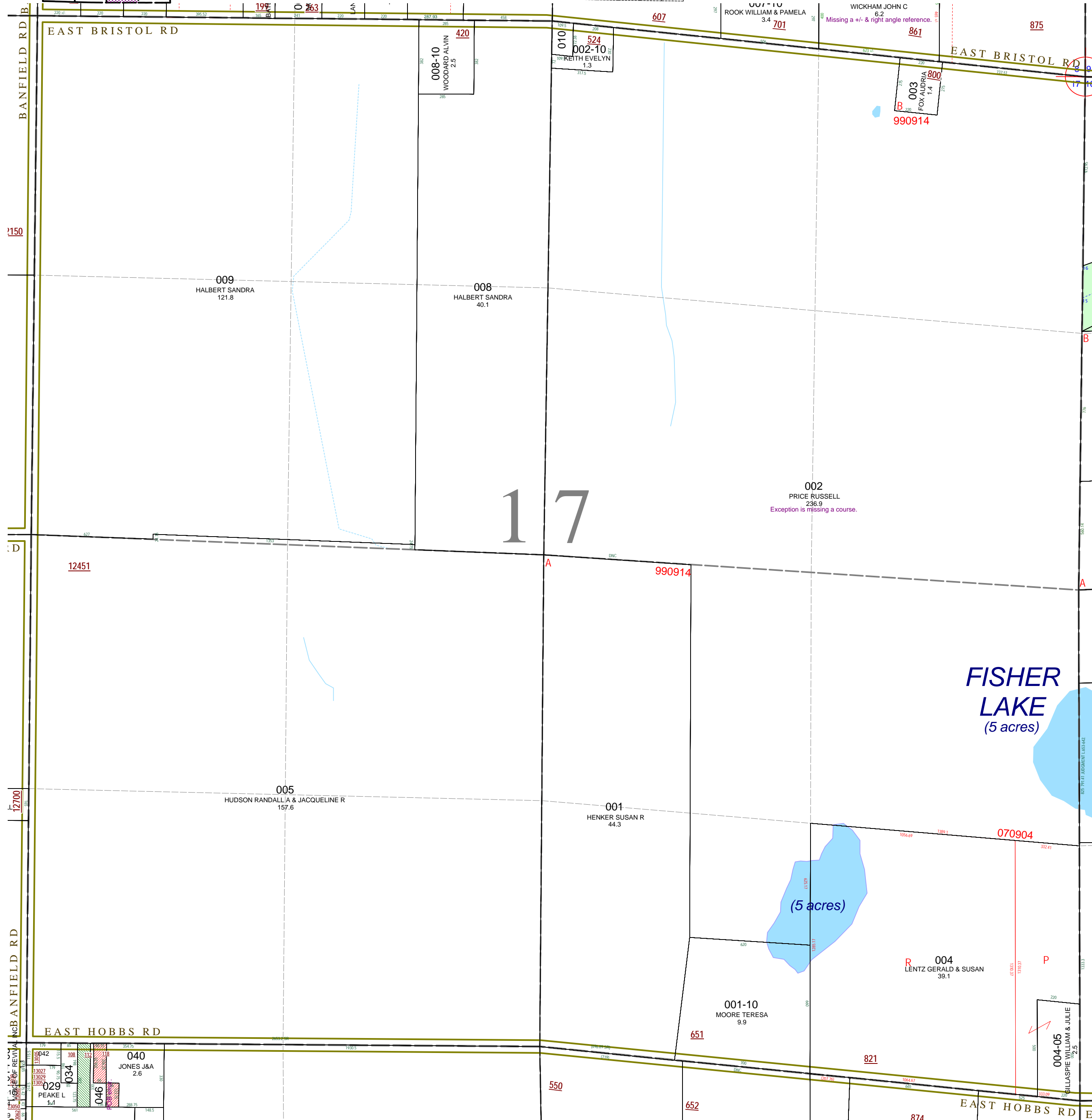
Scale 1" = 400'

This tax map was compiled for tax administration purposes from county and township records. It does not represent a land survey.
Barry County Land Information Services
220 West State Street, Hastings MI 49058
(269) 945-1292 or <http://www.barrycounty.org/>



April 1998
Revised June 2000
Revised May 2002
Revised October 2003
Revised November 2004
Revised May 2006
Revised June 2008

All dimensions are from tax roll unless noted below.
D = deeded M or S = surveyed
SR = Surveyor's Record prior to 1915
GLO = Government Land Office circa. 1830



08-09-017-002-00 needs to have exception redescrbed because it missing a course.