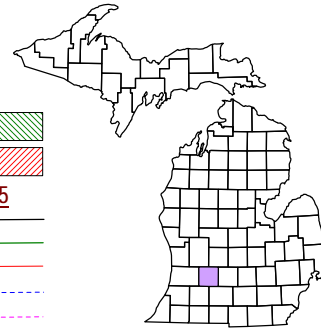


Johnstown Township
T 1 N R 8 W
Barry County
Michigan



6	5	4	3	2	1
7	8	9	10	11	12
18	17	16	15	14	13
20	21	22	23	24	
30	29	28	27	26	25
31	32	33	34	35	36

Section 19
08-09-019-

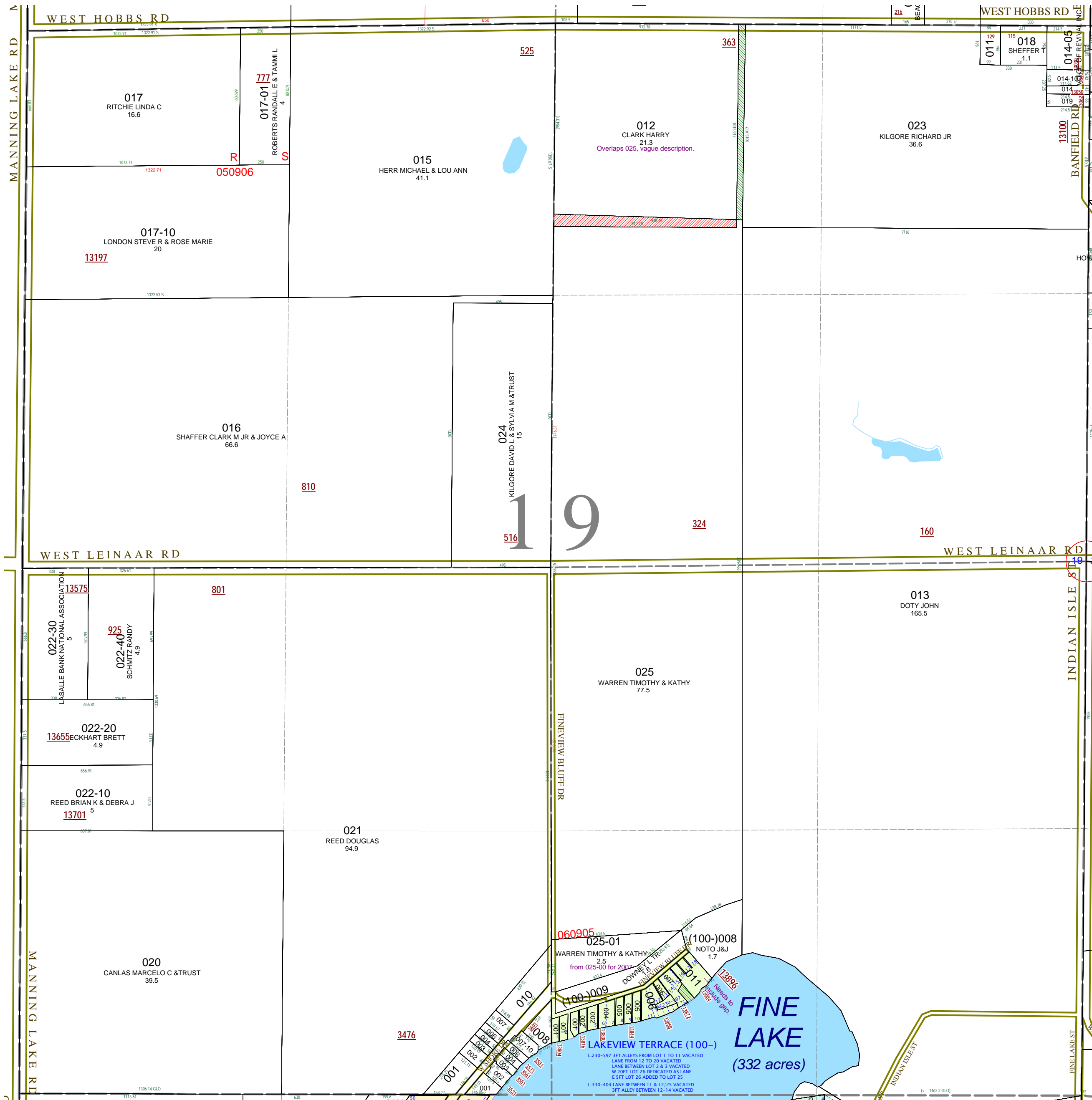
Scale 1" = 400'



April 1998
 Revised June 2000
 Revised May 2002
 Revised October 2003
 Revised November 2004
 Revised May 2006
 Revised June 2008

This tax map was compiled for tax administration purposes from county and township records. It does not represent a land survey. Barry County Land Information Services 220 West State Street, Hastings MI 49058 (269) 945-1292 or <http://www.barrycounty.org/>

All dimensions are from tax roll unless noted below.
 D = deeded M or S = surveyed
 SR = Surveyor's Record prior to 1915
 GLO = Government Land Office circa. 1830



08-09-019-012-00 overlaps 025. See L.394-420.

08-09-100-011-00 needs include gap to its southwest.

08-09-100-006-00 needs to include its share of adjacent alleys vacated in L.230-597 & L.330-404.

08-09-100-005-00 needs to include its share of adjacent alleys vacated in L.230-597.

08-09-100-004-00 needs to include its share of adjacent alleys vacated in L.230-597.

08-09-100-002-00 needs to include its share of adjacent alleys vacated in L.230-597.

08-09-100-001-00 needs to include its share of adjacent alleys vacated in L.230-597.