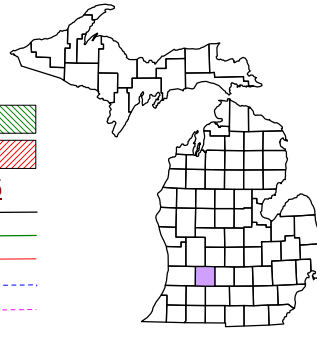


Johnstown Township
T 1 N R 8 W
Barry County
Michigan

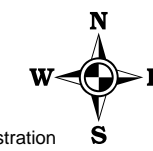
- Gap
- Overlap
- Address 12345
- Real Property
- Personal Property
- Approved Split
- Plat
- Condominium



6	5	4	3	2	1
7	8	9	10	11	12
18	17	16	15	14	13
1	20	21	22	23	24
30	29	28	27	26	25
31	32	33	34	35	36

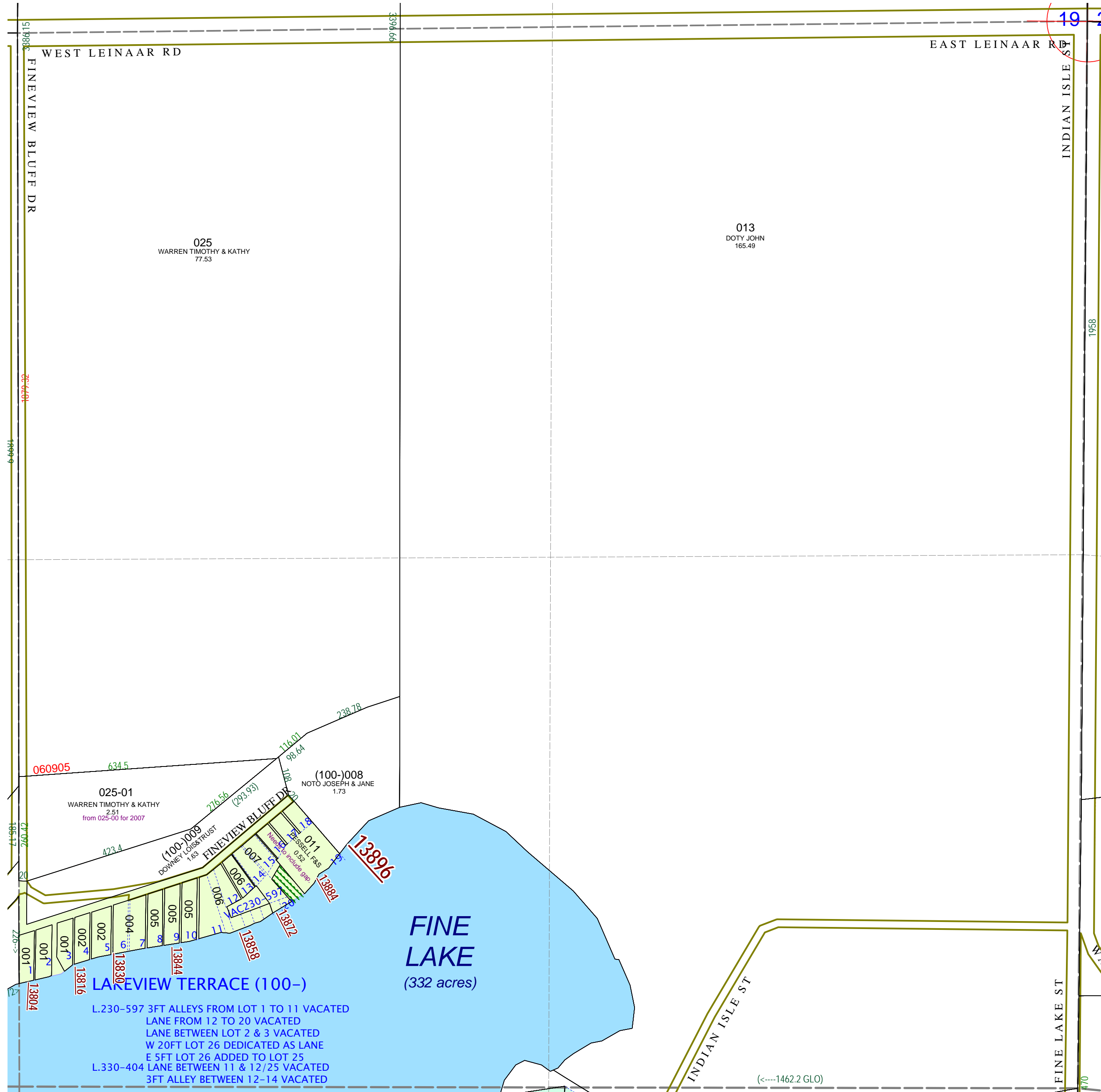
SE 1/4 Section 19
08-09-019-

Scale 1" = 200'



This tax map was compiled for tax administration purposes from county and township records. It does not represent a land survey.
Barry County Land Information Services
220 West State Street, Hastings MI 49058
(269) 945-1292 or <http://www.barrycounty.org/>

June 2000
Revised May 2002
Revised October 2003
Revised November 2004
Revised May 2006
Revised May 2008
All dimensions are from tax roll unless noted below.
D = deeded M or S = surveyed
SR = Surveyor's Record prior to 1915
GLO = Government Land Office circa. 1830



- 08-09-100-011-00 needs include gap to its southwest.
- 08-09-100-006-00 needs to include its share of adjacent alleys vacated in L.230-597 & L.330-404.
- 08-09-100-005-00 needs to include its share of adjacent alleys vacated in L.230-597.
- 08-09-100-004-00 needs to include its share of adjacent alleys vacated in L.230-597.
- 08-09-100-002-00 needs to include its share of adjacent alleys vacated in L.230-597.
- 08-09-100-001-00 needs to include its share of adjacent alleys vacated in L.230-597.

LAKEVIEW TERRACE (100-)
L.230-597 3FT ALLEYS FROM LOT 1 TO 11 VACATED
LANE FROM 12 TO 20 VACATED
LANE BETWEEN LOT 2 & 3 VACATED
W 20FT LOT 26 DEDICATED AS LANE
E 5FT LOT 26 ADDED TO LOT 25
L.330-404 LANE BETWEEN 11 & 12/25 VACATED
3FT ALLEY BETWEEN 12-14 VACATED

(-----1462.2 GLO)