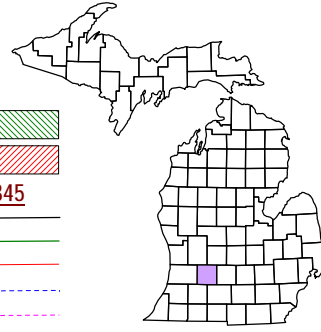


Johnstown Township  
T 1 N R 8 W  
Barry County  
Michigan

- Gap
- Overlap
- Address
- Real Property
- Personal Property
- Approved Split
- Plat
- Condominium



6	5	4	3	2	1
7	8	9	10	11	12
18	17	16	15	14	13
19	20	21	22	23	24
30	29	28	27	26	25
32	33	34	35	36	

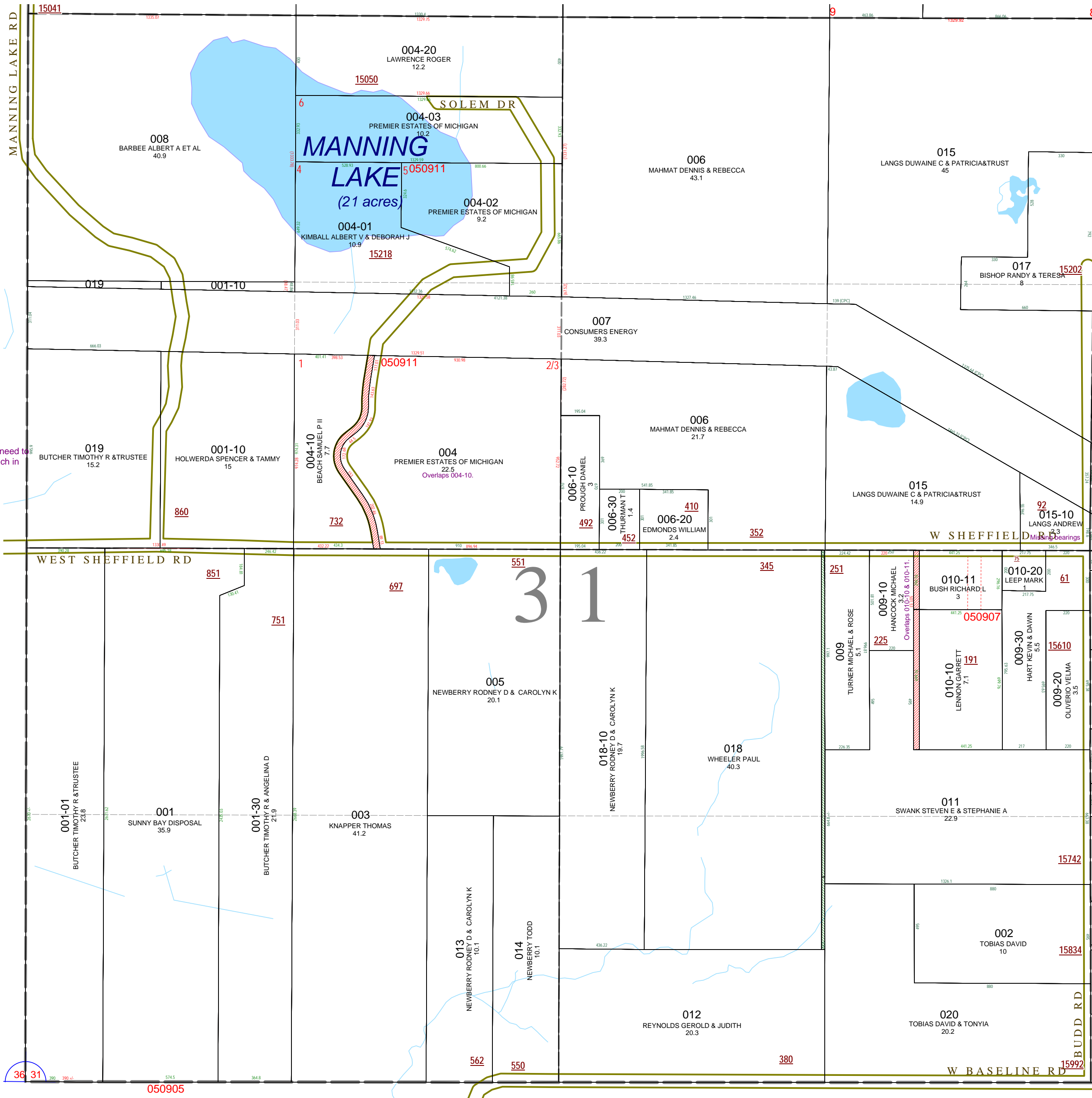
Section 31  
08-09-031-  
Scale 1" = 400'



April 1998  
Revised June 2000  
Revised May 2002  
Revised October 2003  
Revised November 2004  
Revised May 2006  
Revised June 2008

This tax map was compiled for tax administration purposes from county and township records. It does not represent a land survey. Barry County Land Information Services 220 West State Street, Hastings MI 49058 (269) 945-1292 or <http://www.barrycounty.org/>

All dimensions are from tax roll unless noted below.  
D = deeded M or S = surveyed  
SR = Surveyor's Record prior to 1915  
GLO = Government Land Office circa. 1830



08-09-031-004-00 overlaps 004-10 and needs to exclude parcel sold from Premier to Beach in R#1153873. See split #050911.

08-09-031-015-10 is missing bearings on last two courses.

08-09-031-010-10 & 010-11 overlaps 009-10 and does so on deeds. Last deed from Hancock to Joi Heather Glasheen in 2003 R#1111664 gets rid of overlap, but has different dimensions.

GAP owned by Enza Marie Cooper in L.280-257 and not sold to Boden in L.230-257.

GAP owned by Fred Cooper in L.208-193 and not sold onto Inman in L.219-11.