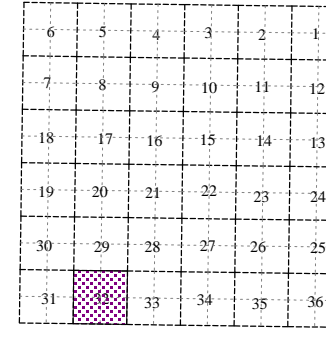
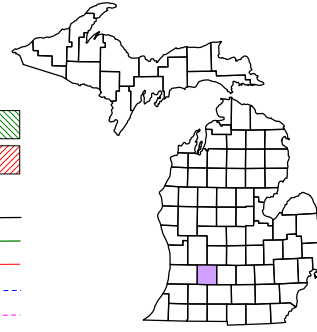


Johnstown Township
T 1 N R 8 W
Barry County
Michigan

- Gap
- Overlap
- Address
- Real Property
- Personal Property
- Approved Split
- Plat
- Condominium



Section 32
08-09-032-

Scale 1" = 400'

This tax map was compiled for tax administration purposes from county and township records. It does not represent a land survey. Barry County Land Information Services 220 West State Street, Hastings MI 49058 (269) 945-1292 or <http://www.barrycounty.org/>



April 1998
Revised June 2000
Revised May 2002
Revised October 2003
Revised November 2004
Revised May 2006
Revised June 2008

All dimensions are from tax roll unless noted below.
D = deeded M or S = surveyed
SR = Surveyor's Record prior to 1915
GLO = Government Land Office circa. 1830

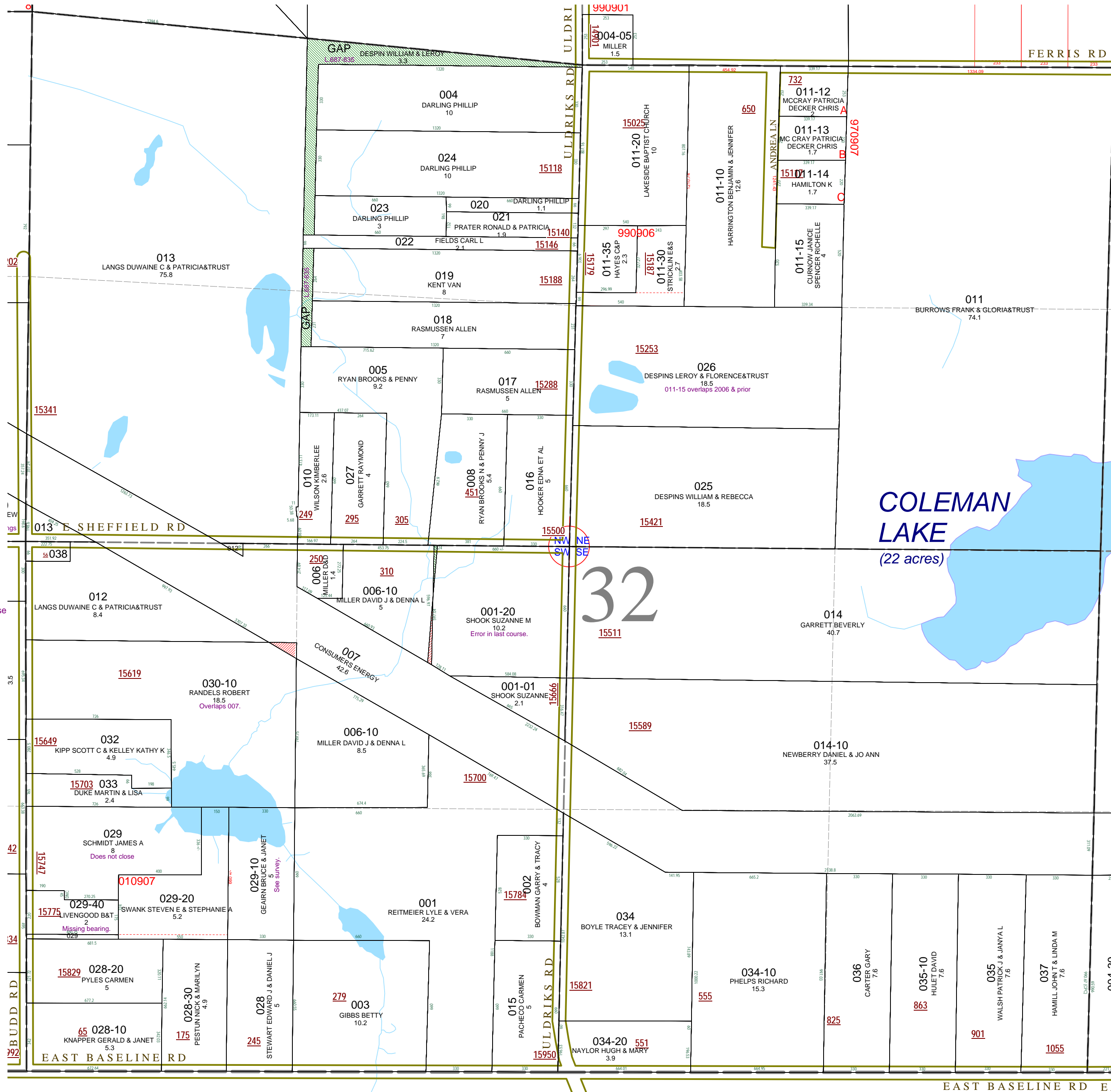
GAP created by sloppy deeding and owned by William & Leroy Despin in L.687-835.

08-09-032-001-20 has an error in the last course and should be described as deeded in R#1038367.

08-09-032-030-10 overlaps 007 and needs to exclude Consumers Energy right of way.

08-09-032-029-00 does not close because it is missing a course.

08-09-032-029-40 is missing bearings on one course, correction reads from L.649-959 & L.643-71.



EAST BASELINE RD EA