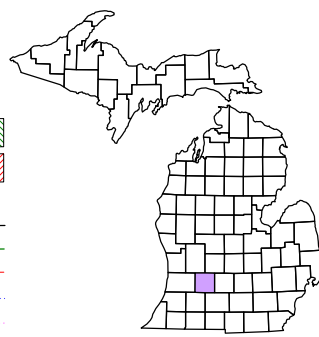


Johnstown Township
T 1 N R 8 W
Barry County
Michigan

- Gap
- Overlap
- Address
- Real Property
- Personal Property
- Approved Split
- Plat
- Condominium



6	5	4	3	2	1
7	8	9	10	11	12
18	17	16	15	14	13
19	20	21	22	23	24
30	29	28	27	26	25
31	32	33	34	35	36

Section 34
08-09-034-

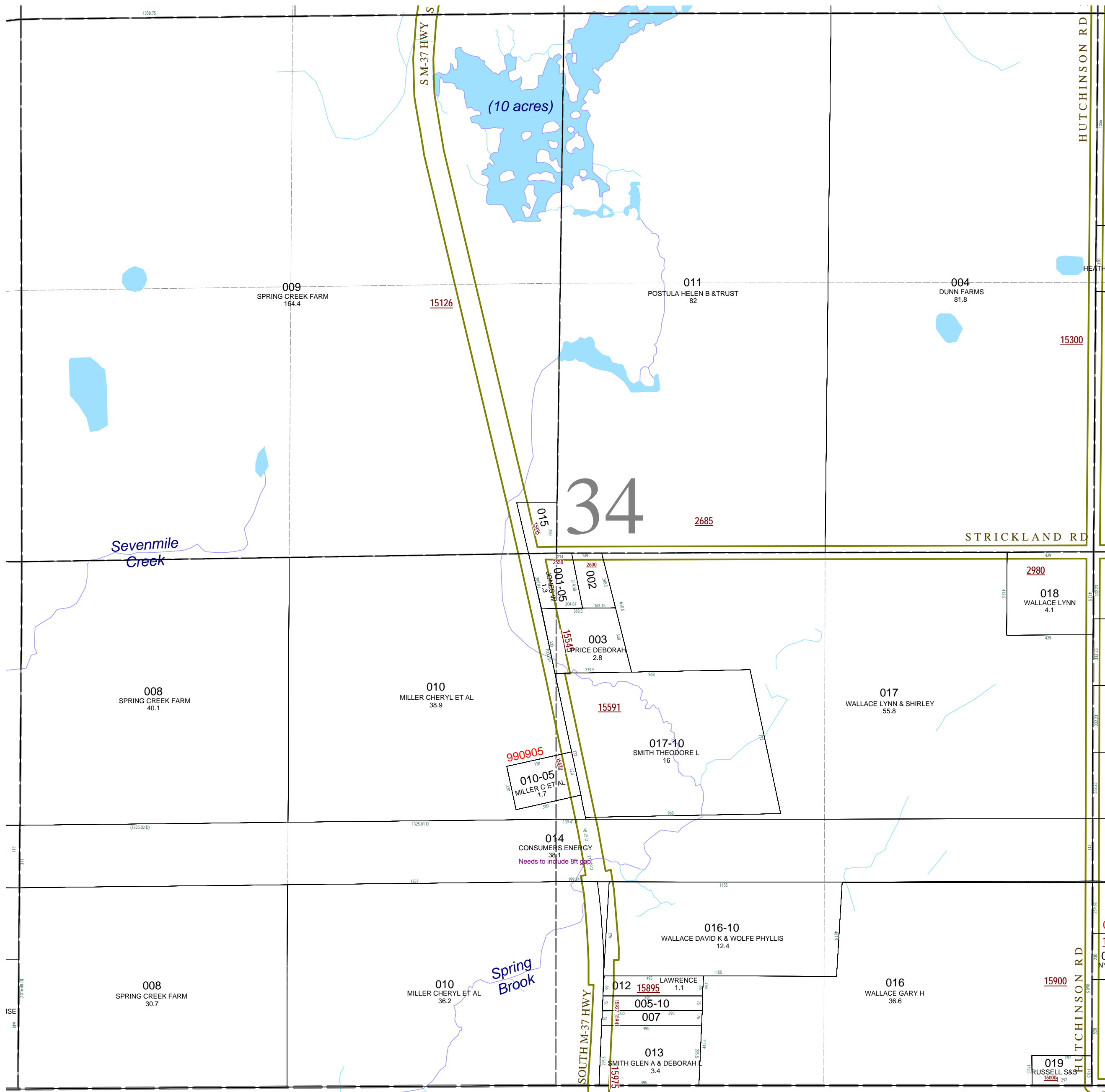
Scale 1" = 400'

This tax map was compiled for tax administration purposes from county and township records. It does not represent a land survey.
 Barry County Land Information Services
 220 West State Street, Hastings MI 49058
 (269) 945-1292 or <http://www.barrycounty.org/>



April 1998
 Revised June 2000
 Revised May 2002
 Revised October 2003
 Revised November 2004
 Revised May 2006
 Revised June 2008

All dimensions are from tax roll unless noted below.
 D = deeded M or S = surveyed
 SR = Surveyor's Record prior to 1915
 GLO = Government Land Office circa. 1830



08-09-034-014-00 needs to include 8 foot wide gap parcel between it and 016-00. See parcels 25, 26 & 27 of R#1142329 & R#1084836.