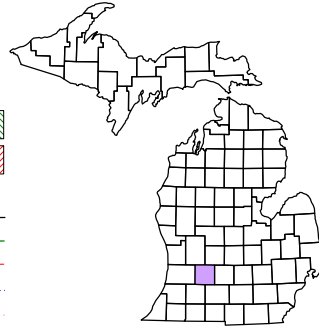


Johnstown Township  
T 1 N R 8 W  
Barry County  
Michigan

- Gap
- Overlap
- Address
- Real Property
- Personal Property
- Approved Split
- Plat
- Condominium



6	5	4	3	2	1
7	8	9	10	11	12
18	17	16	15	14	13
19	20	21	22	23	24
30	29	28	27	26	25
31	32	33	34	35	36

Section 36  
08-09-036-

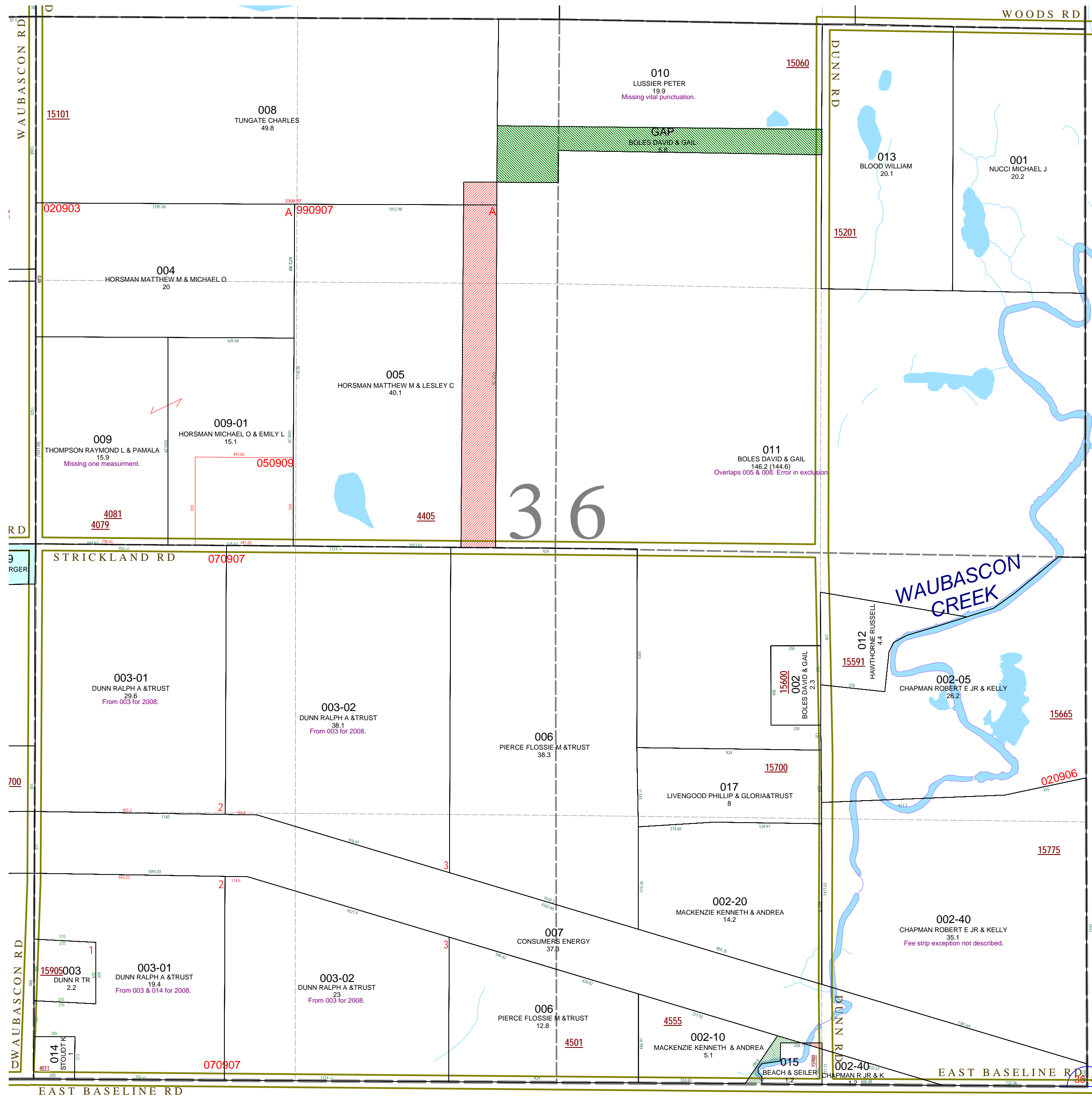
Scale 1" = 400'

This tax map was compiled for tax administration purposes from county and township records. It does not represent a land survey. Barry County Land Information Services 220 West State Street, Hastings MI 49058 (269) 945-1292 or <http://www.barrycounty.org/>



April 1998  
Revised June 2000  
Revised May 2002  
Revised October 2003  
Revised November 2004  
Revised May 2006  
Revised June 2008

All dimensions are from tax roll unless noted below.  
D = deeded M or S = surveyed  
SR = Surveyor's Record prior to 1915  
GLO = Government Land Office circa. 1830



08-09-036-010-00 has some confusion about the placement of that 20 acres. Lack of punctuation in the tax descriptions causes the confusion.

08-09-036-011-00 has some confusion about that excluded 20 acres. Lack of punctuation in tax description is causing the confusion and creates the overlaps.

08-09-036-002-40 needs to describe Consumer Energy exception as deeded.

08-09-036-015-00 overlaps 007 by failing to exclude the Consumers Energy fee strip.  
GAP next to 015, owned by Archie K. (deceased) & Betty L. Dunn in L.363-673 and not sold in L.636-675.