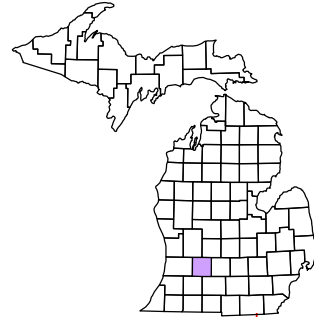


IRVING	CARLTON	WOODLAND
YANKEE SPRINGS	RUTLAND	CASTLETON
BRANGEVILL	HOPE	MAPLE GROVE
DIXON	BARREY	ASSYRIA
KIRSTOWN		

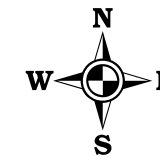
Prairieville Township
T 1 N R 10 W
Barry County
Michigan

Gap	
Overlap	
Address	
Real Property	
Personal Property	
Approved Split	
Plat	
Condominium	
Mobile Home Park	



6	7	8	9	10	11	12
13	14	15	16	17	18	19
20	21	22	23	24	25	26
27	28	29	30	31	32	33
34	35	36	37	38	39	40

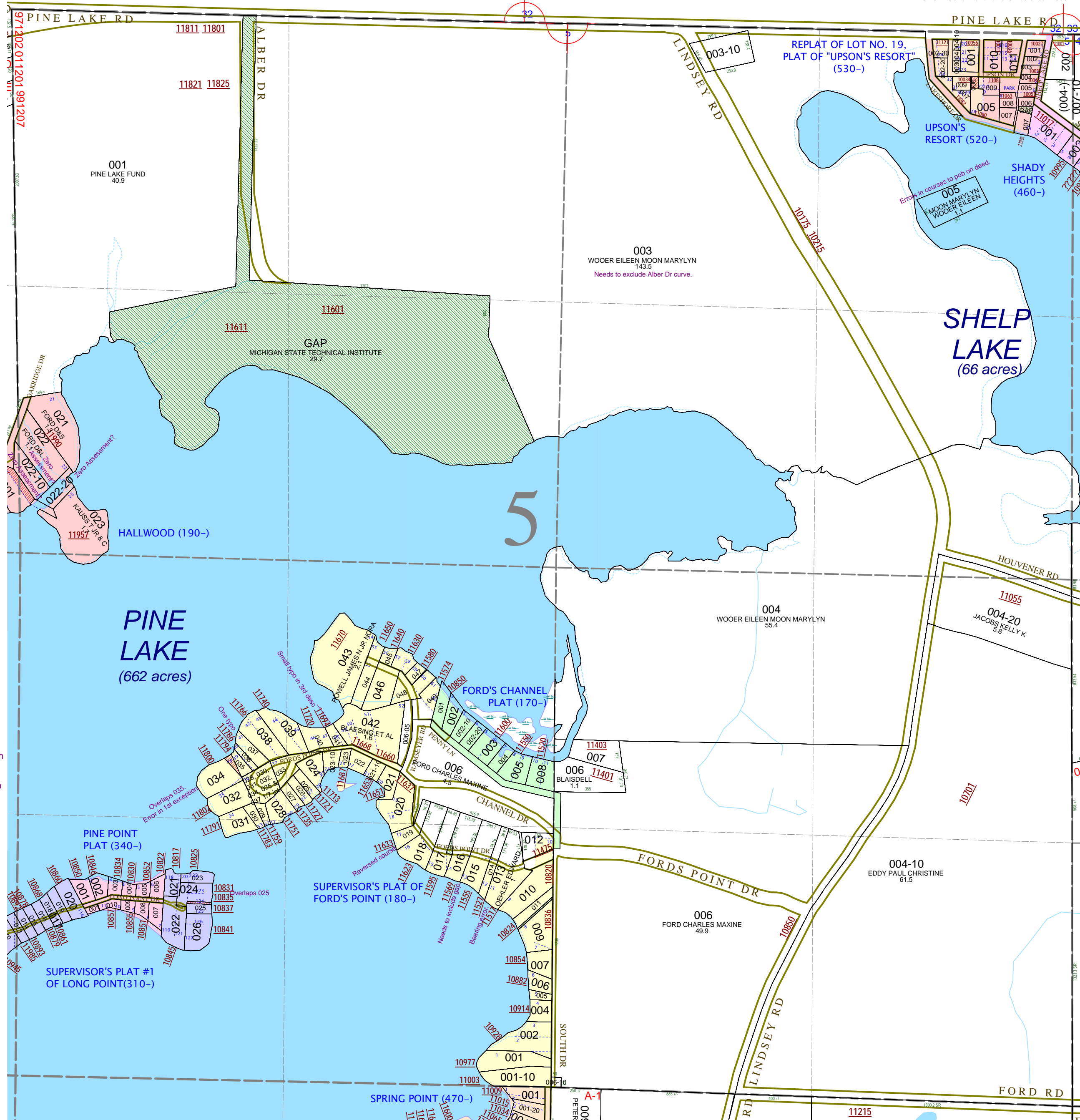
Section 5
08-12-005-
Scale 1" = 400'



November 1996
Revised May 1998
Revised September 2000
Revised August 2002
Revised November 2003
Revised January 2005
Revised April 2006
Revised May 2008

All dimensions are from tax roll unless noted below.
D = deeded M or S = surveyed
SR = Surveyor's Record prior to 1915
GLO = Government Land Office circa. 1830

This tax map was compiled for tax administration purposes from county and township records. It does not represent a land survey.
Barry County Land Information Services
220 West State Street, Hastings MI 49058
(269) 945-1292 or <http://www.barrycounty.org/>



GAP is the Michigan State Technical Institute

08-12-180-041-00 has one small typo from 2008 change, "TH 23D 46M 30S W" should be "TH S23°46'30"W"

08-12-180-036-00 overlaps 035-00 by the way it describes its part of lot 39. See #20080225-0001720 for correction.

08-12-180-034-00 overlaps 035-00, has an error in its first exception and should make exclusion from L.522-944 in addition to changes on its south lot line

08-12-180-019-00 has the first course reversed in bearings on second description.

08-12-180-017-00 should also include gap parcel deeded in L.672-324.

08-12-180-013-00 the bearing of "S 10D 11M 29S W" should be "S10°11'29"E".

08-12-310-024-00 overlaps 025-00 by 10 feet. See L.636-576 for correction.

GAP in lot 8 owned by Robert Ford, who was owner prior to supervisor's plat.

08-12-520-007-00 has a misplaced comma which is confusing and needs to include gap in lot 7, correction reads from R#1142484.

NEW between 007 & 008 in lot 8 which was omitted many, many deeds back. It is in title to Kittie C. Upson (deceased), Bernice F. Smith & Dorothy M. Upson (j/t not t/c).

08-12-005-005-00 as described floats out in Shelp Lake. The description is the same in L. 664-558/560, L.369-433 & the original deed from Eli Lindsey to Lloyd Lindsey. This can be corrected with one small change in direction to point of beginning and to point of commencement.

08-12-005-003-00 needs to exclude wedge parcel which is parcels 2 & 3 of the L.151-227 document as quoted on trust deed. The exception for 005 also floats out in the lake and can be corrected to fit the property by a small change in one of courses to point of beginning and point of commencement.