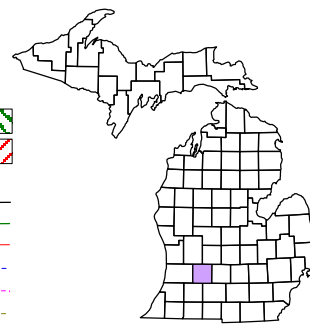


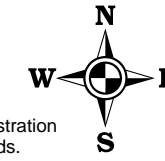
Prairieville Township  
T 1 N R 10 W  
Barry County  
Michigan

- Gap
- Overlap
- Address
- Real Property
- Personal Property
- Approved Split
- Plat
- Condominium
- Mobile Home Park



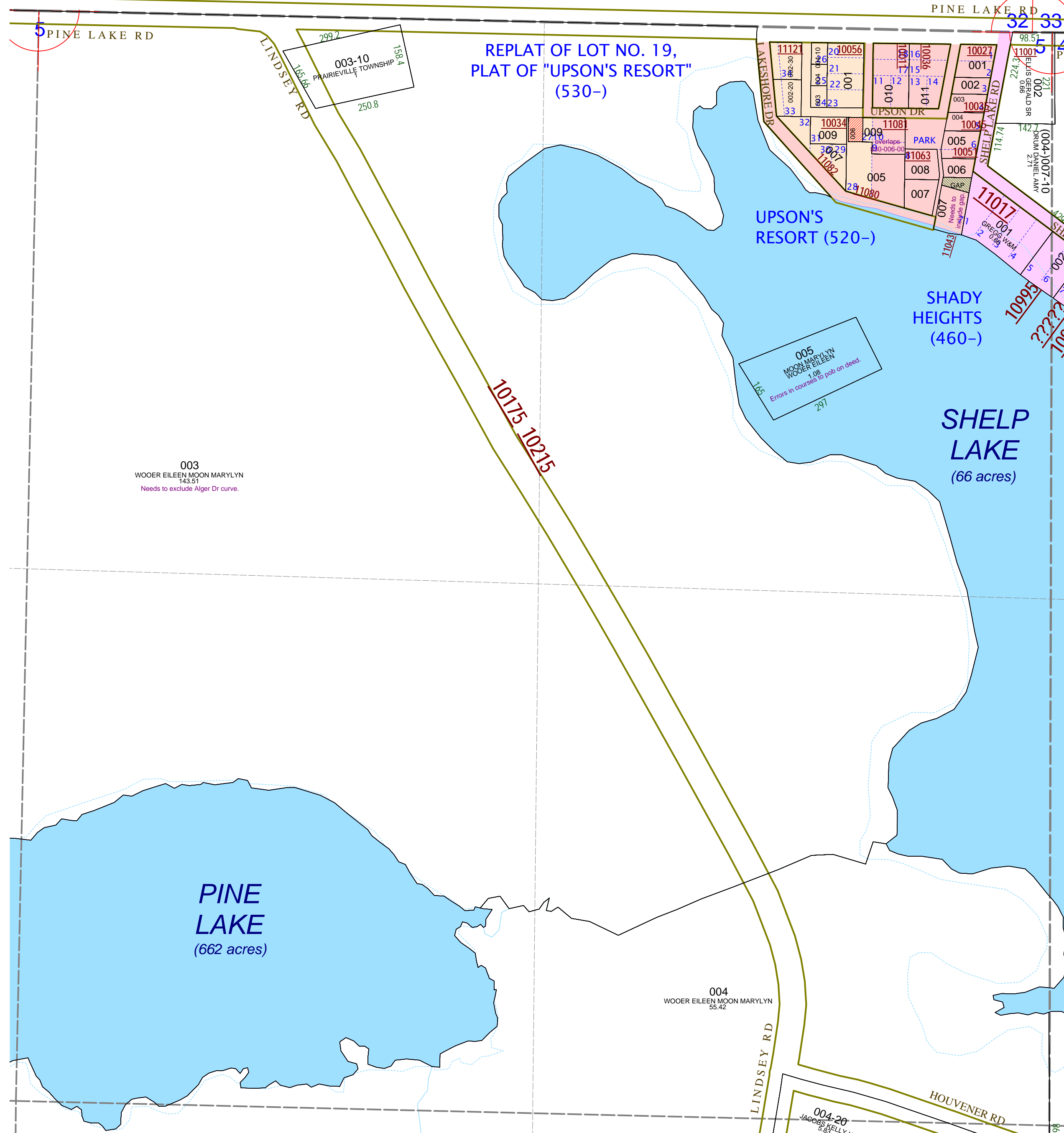
6	7	8	9	10	11	12
13	14	15	16	17	18	19
20	21	22	23	24	25	26
27	28	29	30	31	32	33
34	35	36	37	38	39	40

NE 1/4 Section 5  
08-12-005-  
Scale 1"= 200'



September 2000  
Revised August 2002  
Revised November 2003  
Revised January 2005  
Revised April 2006  
Revised May 2008

All dimensions are from tax roll unless noted below.  
D = deeded M or S = surveyed  
SR = Surveyor's Record prior to 1915  
GLO = Government Land Office circa 1830



08-12-005-003-00 needs to exclude wedge parcel which is parcels 2 & 3 of the L.151-227 document as quoted on trust deed. The exception for 005 also floats out in the lake and can be corrected to fit the property by a small change in one of courses to point of beginning and point of commencement.

08-12-520-007-00 has a misplaced comma which is confusing and needs to include gap in lot 7, correction reads from R#1142484.  
NEW which was omitted many, many deeds back. It is in title to Kittie C. Upson (deceased), Bernice F. Smith & Dorothy M. Upson (j/t not t/c).

08-12-005-005-00 as described floats out in Shelp Lake. The description is the same in L. 664-558/560, L.369-433 & the original deed from Eli Lindsey to Lloyd Lindsey. This can be corrected with one small change in direction to point of beginning and to point of commencement.