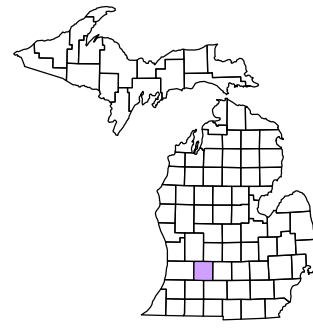


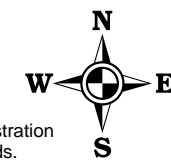
Prairieville Township
T 1 N R 10 W
Barry County
Michigan

- Gap
- Overlap
- Address
- Real Property
- Personal Property
- Approved Split
- Plat
- Condominium
- Mobile Home Park



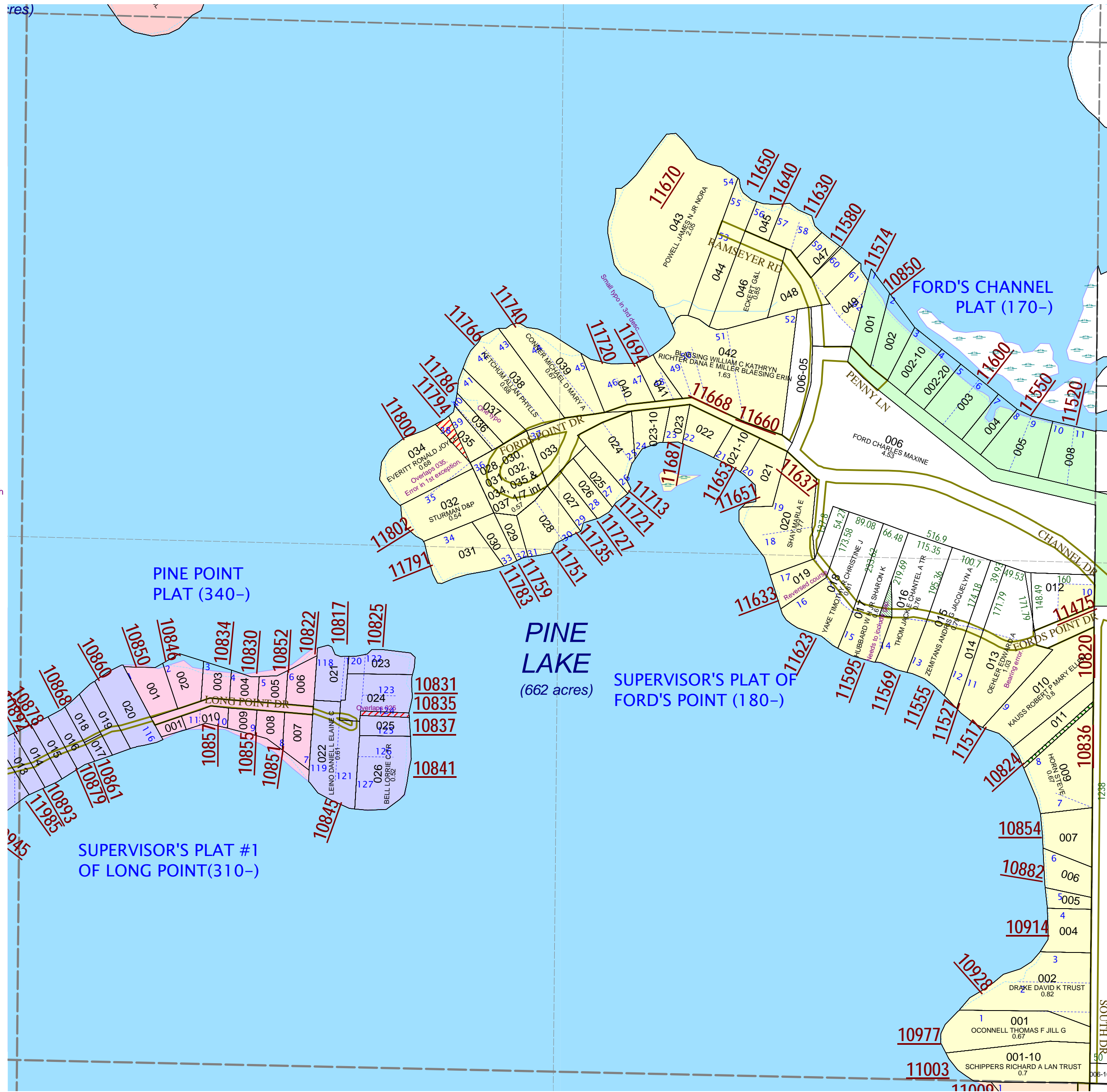
6	7	8	9	10	11	12
13	14	15	16	17	18	19
20	21	22	23	24	25	26
27	28	29	30	31	32	33
34	35	36	37	38	39	40

SW 1/4 Section 5
08-12-005-
Scale 1"= 200'



September 2000
Revised August 2002
Revised November 2003
Revised January 2005
Revised April 2006
Revised May 2008

All dimensions are from tax roll unless noted below.
D = deeded M or S = surveyed
SR = Surveyor's Record prior to 1915
GLO = Government Land Office circa. 1830



08-12-180-036-00 overlaps 035-00 by the way it describes its part of lot 39. See #20080225-0001720 for correction.

08-12-180-034-00 overlaps 035-00, has an error in its first exception and should make exclusion from L.522-944 in addition to changes on its south lot line

08-12-310-024-00 overlaps 025-00 by 10 feet. See L.636-576 for correction.

08-12-180-041-00 has one small typo from 2008 change, "TH 23D 46M 30S W" should be "TH S23°46'30\"W"

08-12-180-019-00 has the first course reversed in bearings on second description.

08-12-180-017-00 should also include gap parcel deeded in L.672-324.

08-12-180-013-00 the bearing of "S 10D 11M 29S W" should be "S10°11'29\"E".

GAP in lot 8 owned by Robert Ford, who was owner prior to supervisor's plat.