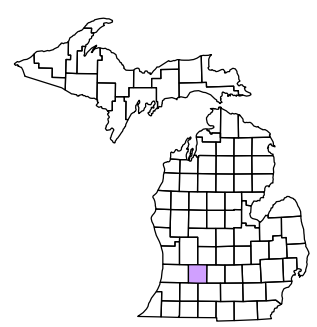


THORNAPPLE	IRVING	CARLTON	MORRISLAND
YANKEE SPRINGS	RUTLAND	HASTINGS	CASTLETON
BRANDENBURG	HOPE	HALTSMORE	MAPLE GROVE
BARRE	MINSTOWN	ASSYRIA	

Prairieville Township  
T 1 N R 10 W  
Barry County  
Michigan

Gap	Green
Overlap	Red
Address	Blue
Real Property	Yellow
Personal Property	Purple
Approved Split	Orange
Plat	Light Blue
Condominium	Light Green
Mobile Home Park	Light Purple



1	2	3	4	5	6	7	8	9	10	11	12
13	14	15	16	17	18	19	20	21	22	23	24
25	26	27	28	29	30	31	32	33	34	35	36

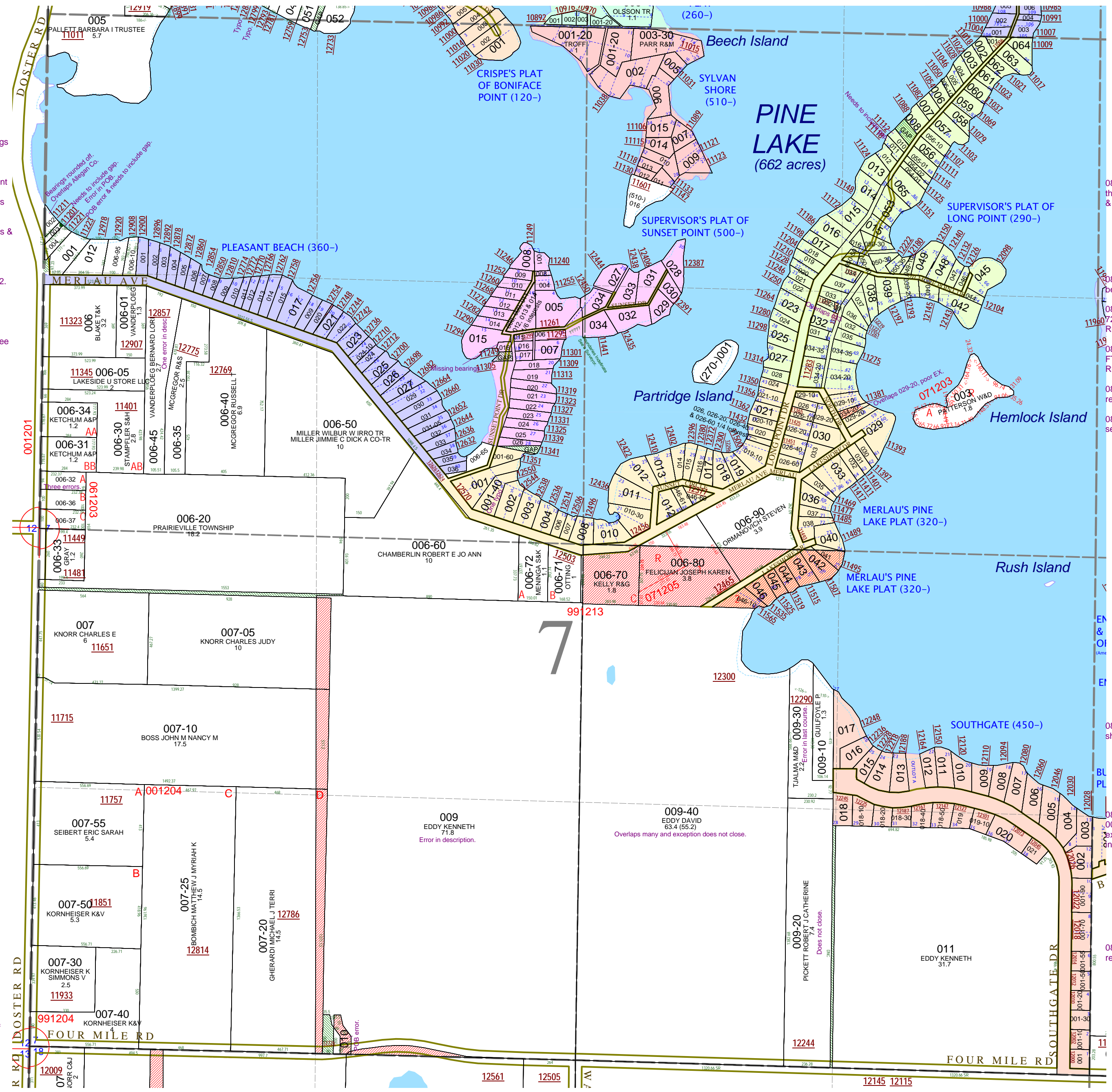
Section 7  
08-12-007-  
Scale 1"= 400'



November 1996  
Revised May 1998  
Revised September 2000  
Revised August 2002  
Revised November 2003  
Revised January 2005  
Revised April 2006  
Revised May 2008

All dimensions are from tax roll unless noted below.  
D = deeded M or S = surveyed  
SR = Surveyor's Record prior to 1915  
GLO = Government Land Office circa. 1830

This tax map was compiled for tax administration purposes from county and township records. It does not represent a land survey.  
Barry County Land Information Services  
220 West State Street, Hastings MI 49058  
(269) 945-1292 or http://www.barrycounty.org/



08-12-007-002-00 has shaved off course bearings and should exclude portions in Allegan County. Description should read as surveyed in L.1-328.

08-12-007-001-00 has an error in courses to point of beginning and needs to include small gap parcel. Correction reads from survey with Rogers in 1967 and recent deed R#1161569.

08-12-500-016-00 is missing courses from metes & bounds description from L.624-461.

GAP owned by Currier in R#1085291 from Whitney who went to court for quiet title on the property. This was not sold to Hop in R#1108932.

08-12-007-006-45 the bearing of "N 0D0M0S W 958.55FT" should read "TH N0°00'12"W 958.55FT"

08-12-007-006-32 is missing the front end of three course bearings, correction reads from Parcel A split #061203

08-12-290-010-00 should include gap parcel to the northeast from deeds to Sawyer in L.403-934 & 935.

08-12-290-019-00 does not close and should only be described as deeded to Klok in L.365-306.

08-12-290-037-00 replace "44D 41M W, 20 FT" with "TH S44°41'W 72.96FT". See R#1049426.

08-12-290-033-00 replace "69D 56M12S W, 20 FT" with "TH N69°56'12"W 20FT". See R#1107881.

08-12-290-032-10 overlaps 033-00 and should read as L.603-908 on deed to Dushane.

08-12-290-034-20 overlaps 08-12-320-029-20 see Survey L.2-08 for correction exception.

08-12-007-009-00 overlaps 007-05, 007-10 & 007-20. See R#1153834

08-12-007-009-30 the direction on the last course should be "E".

08-12-007-009-40 overlaps 006-70, 006-80, 006-90 and Merlau's Pine Lake Plat and the exception does not close. Vesting deed located in R#1153834.

08-12-007-010-00 has error in course to point of beginning (90.25ft should be 90.25 rods). See L.638-484.

08-12-007-009-20 does not close, correction reads from survey by Rogers in L.1-14.