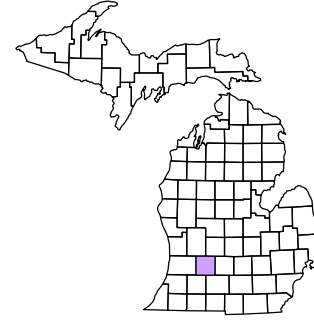
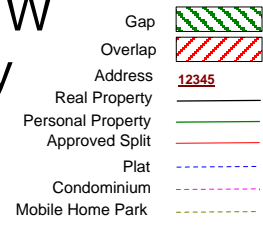
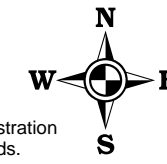


Prairieville Township
T 1 N R 10 W
Barry County
Michigan



1	2	3	4	5	6	7	8	9	10	11	12
13	14	15	16	17	18	19	20	21	22	23	24
25	26	27	28	29	30	31	32	33	34	35	36

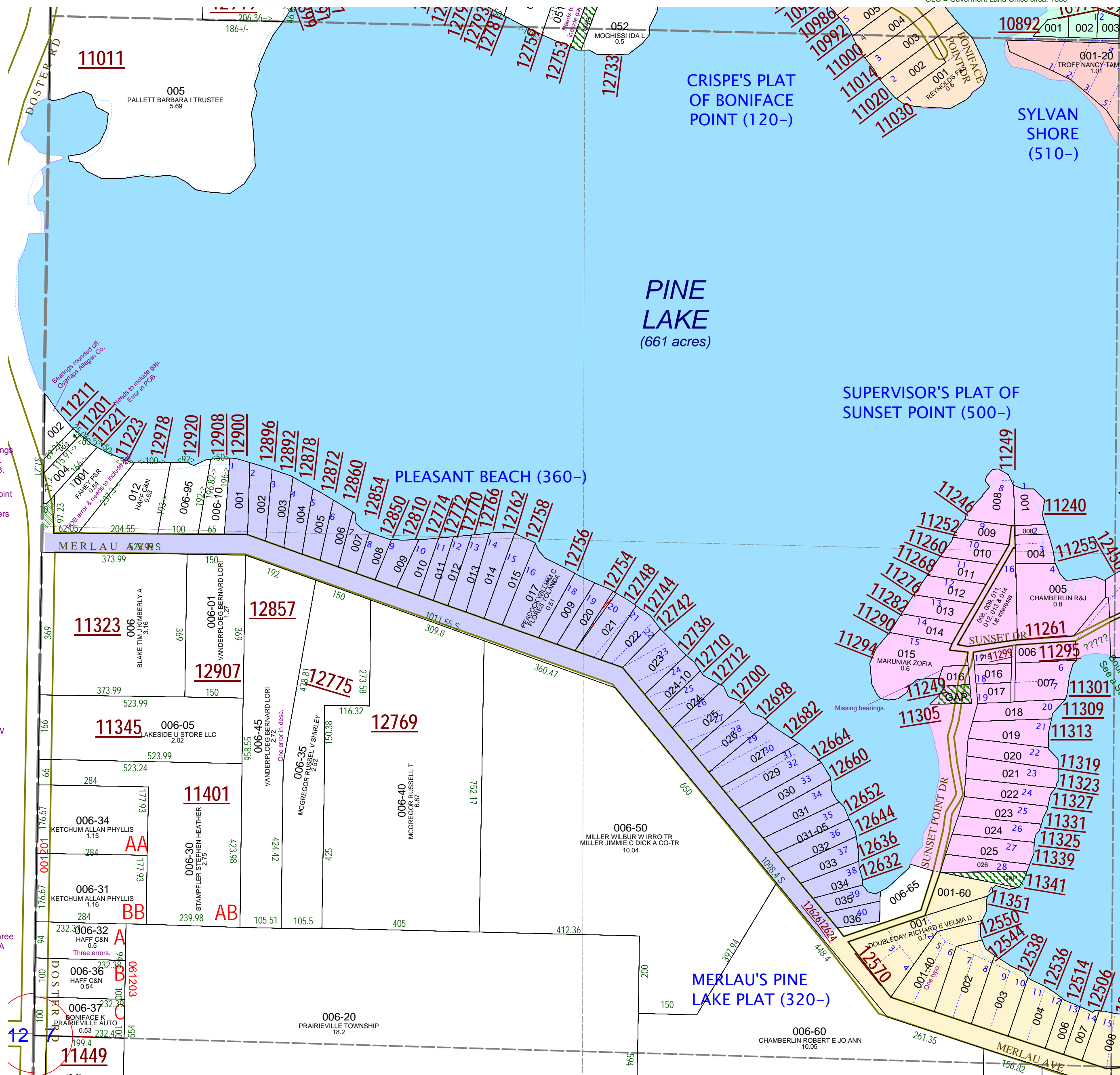
NW 1/4 Section 7
08-12-007-
Scale 1" = 200'



September 2000
Revised August 2002
Revised November 2003
Revised January 2005
Revised April 2006
Revised May 2008

This tax map was compiled for tax administration purposes from county and township records. It does not represent a land survey. Barry County Land Information Services 220 West State Street, Hastings MI 49058 (269) 945-1292 or http://www.barrycounty.org/

All dimensions are from tax roll unless noted below.
D = deeded M or S = surveyed
SR = Surveyor's Record prior to 1915
GLO = Government Land Office circa. 1830



08-12-007-002-00 has shaved off course bearings and should exclude portions in Allegan County. Description should read as surveyed in L.1-328.

08-12-007-001-00 has an error in courses to point of beginning and needs to include small gap parcel. Correction reads from survey with Rogers in 1967 and recent deed R#1161569.

08-12-007-006-45 the bearing of "N 0DOM0S W 958.55FT" should read "TH N0°00'12"W 958.55FT"

08-12-007-006-32 is missing the front end of three course bearings, correction reads from Parcel A split #061203

08-12-500-016-00 is missing courses from metes & bounds description from L.624-461.

GAP owned by Currier in R#1085291 from Whitney who went to court for quiet title on the property. This was not sold to Hop in R#1108932.