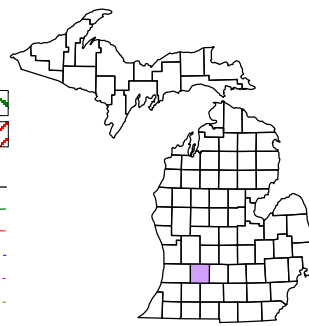


Prairieville Township  
T 1 N R 10 W  
Barry County  
Michigan

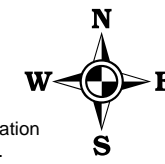
Legend:

- Gap: Green diagonal lines
- Overlap: Red diagonal lines
- Address: 12345
- Real Property: Solid green line
- Personal Property: Dashed green line
- Approved Split: Dotted green line
- Plat: Dashed blue line
- Condominium: Dotted blue line
- Mobile Home Park: Dotted purple line



1	2	3	4	5	6	7	8	9	10	11	12
13	14	15	16	17	18	19	20	21	22	23	24
25	26	27	28	29	30	31	32	33	34	35	36

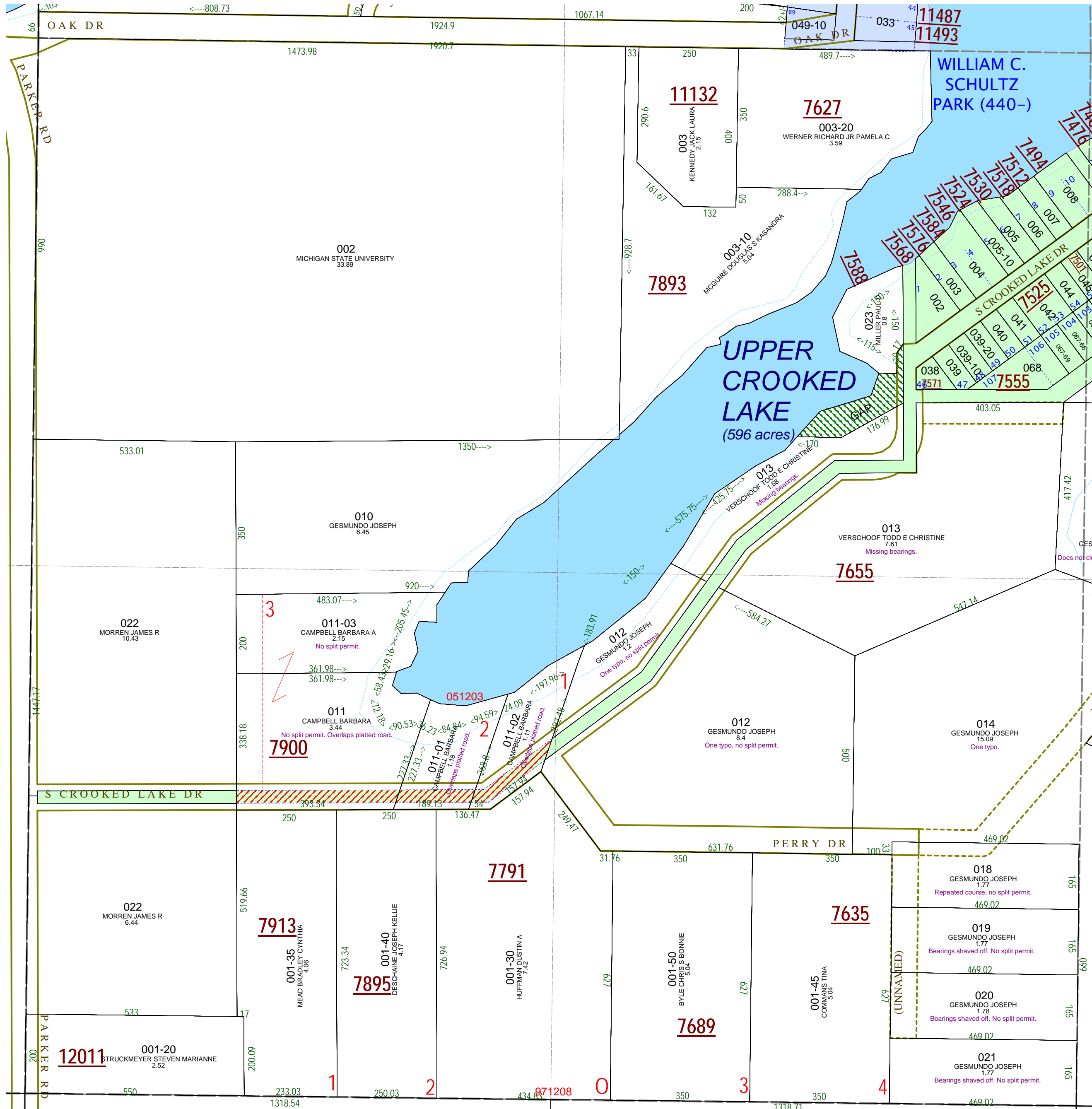
SW 1/4 Section 12  
08-12-012-  
Scale 1" = 200'



September 2000  
Revised August 2002  
Revised November 2003  
Revised January 2005  
Revised April 2006  
Revised May 2008

This tax map was compiled for tax administration purposes from county and township records. It does not represent a land survey.  
Barry County Land Information Services  
220 West State Street, Hastings MI 49058  
(269) 945-1292 or <http://www.barrycounty.org/>

All dimensions are from tax roll unless noted below.  
D = deeded M or S = surveyed  
SR = Surveyor's Record prior to 1915  
GLO = Government Land Office circa. 1830



08-12-012-011-00 should not include platted road in William C. Shultz Park.

08-12-012-011-01 should not include platted road in William C. Shultz Park.

08-12-012-011-02 should not include platted road in William C. Shultz Park.

GAP north of parcel 013-00 owned by Gesmundo.

08-12-012-013-00 is missing the seconds off the course bearings. Correction reads from deed L.590-727.

08-12-012-012-00 has one small typo, change "89D 45M 30S E, 1169.47 FT" to "N89°45'30"E 1169.47FT"

08-12-012-014-00 has one small typo, change "TH 89D 45M 30S E, 1169.47 FT" to "TH N89°45'30"E 1169.47FT"

08-12-012-018-00 has a repeated course to its point of beginning.

08-12-012-019-00 has had its course bearings shaved off.

08-12-012-020-00 has had its course bearings shaved off.

08-12-012-021-00 has had its course bearings shaved off.