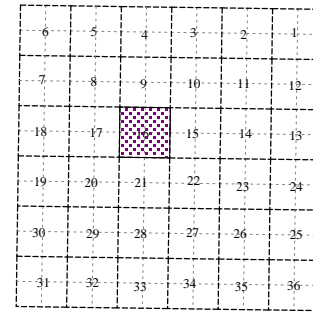
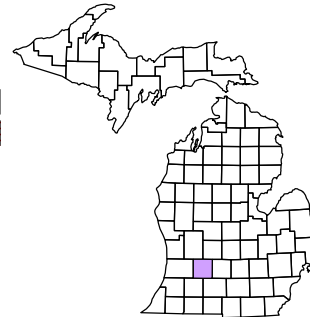
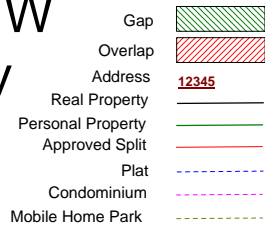
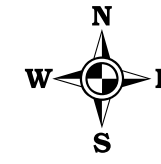


Prairieville Township
T 1 N R 10 W
Barry County
Michigan



Section 16
08-12-016-
Scale 1"= 400'



November 1996
Revised May 1998
Revised September 2000
Revised August 2002
Revised November 2003
Revised January 2005
Revised April 2006
Revised May 2008

All dimensions are from tax roll unless noted below.
D = deeded M or S = surveyed
SR = Surveyor's Record prior to 1915
GLO = Government Land Office circa. 1830

This tax map was compiled for tax administration purposes from county and township records. It does not represent a land survey.
Barry County Land Information Services
220 West State Street, Hastings MI 49058
(269) 945-1292 or <http://www.barrycounty.org/>

08-12-016-002-30 is missing its bearings and has been surveyed for R#1180188.

08-12-016-002-10 needs to exclude 002-30 as surveyed for R#1180188

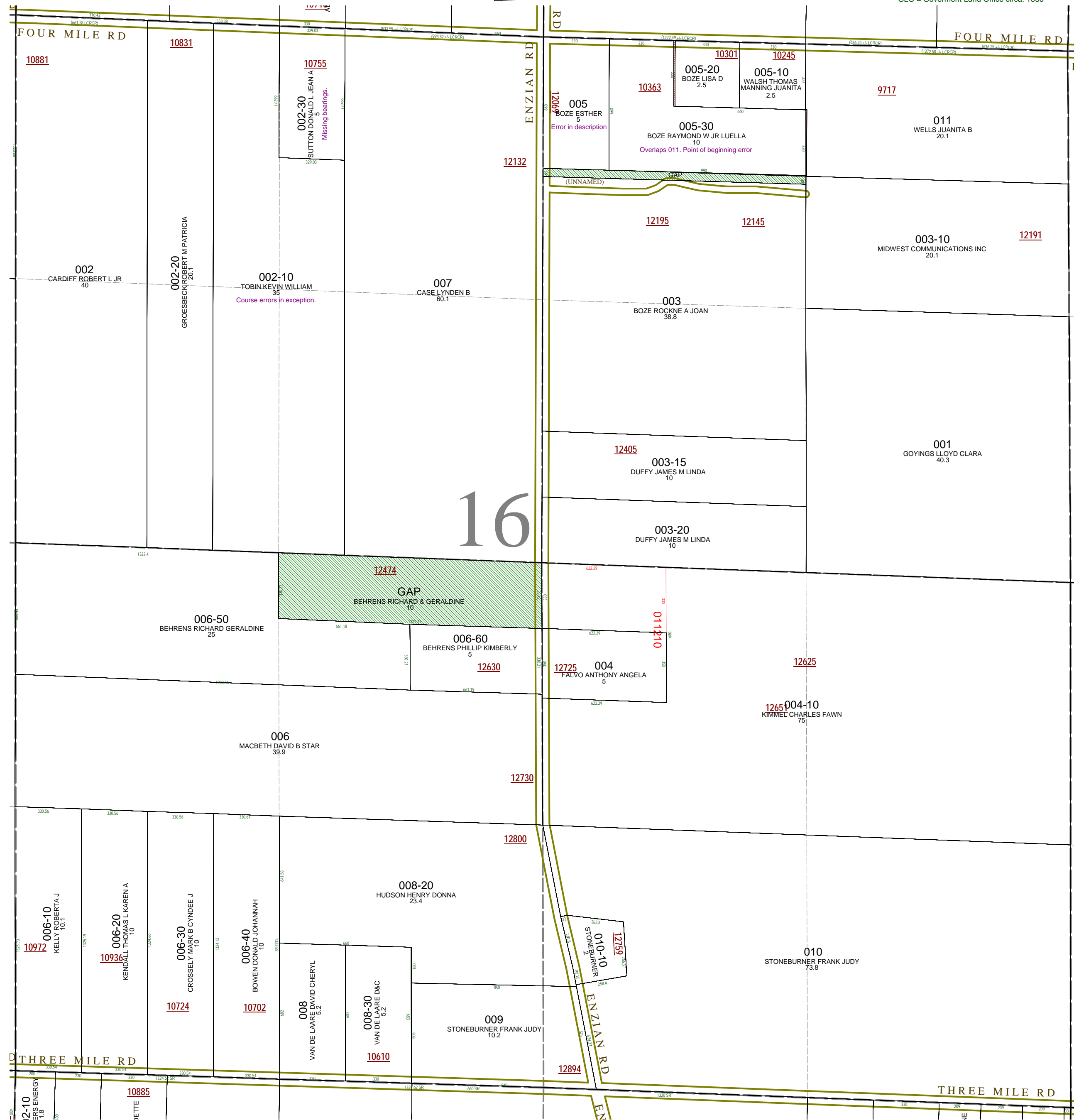
GAP owned by Richard & Gereldine Behrens (006-50).

08-12-016-006-10 has bearings rounded off. See survey L.1-438

08-12-016-006-20 has bearings rounded off. See survey L.1-438

08-12-016-006-30 has bearings rounded off. See survey L.1-438

08-12-016-006-40 has bearings rounded off. See survey L.1-438



08-12-016-005-00 should be described as remainder of sales because quarter section is short (1272.49 feet in LCRCR) in the east-west measurement. It overlaps 005-30 if not corrected.

08-12-016-005-30 has error in point of beginning and the leftovers of another description left on the end of the current description.

GAP owned by Ray W. & Ester Boze, Clayton R. & Norma Boze, Walter Jr. & Kathryn Boze, Madeline E. Swift & Marian D. Hammond in L.401-350 and excepted in L.509-901 in sale to Rockne Boze.