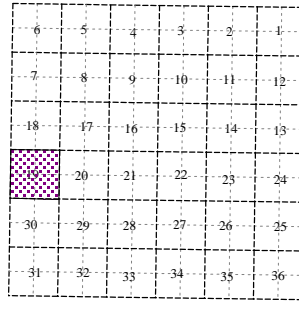
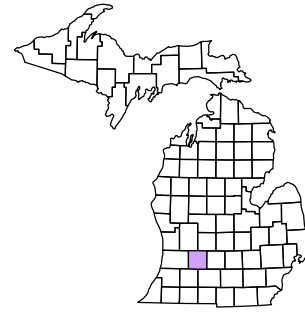
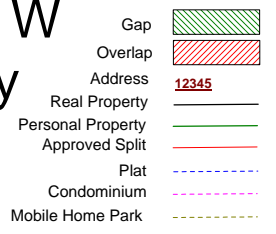
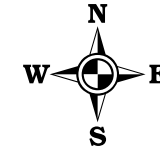


Prairieville Township
T 1 N R 10 W
Barry County
Michigan

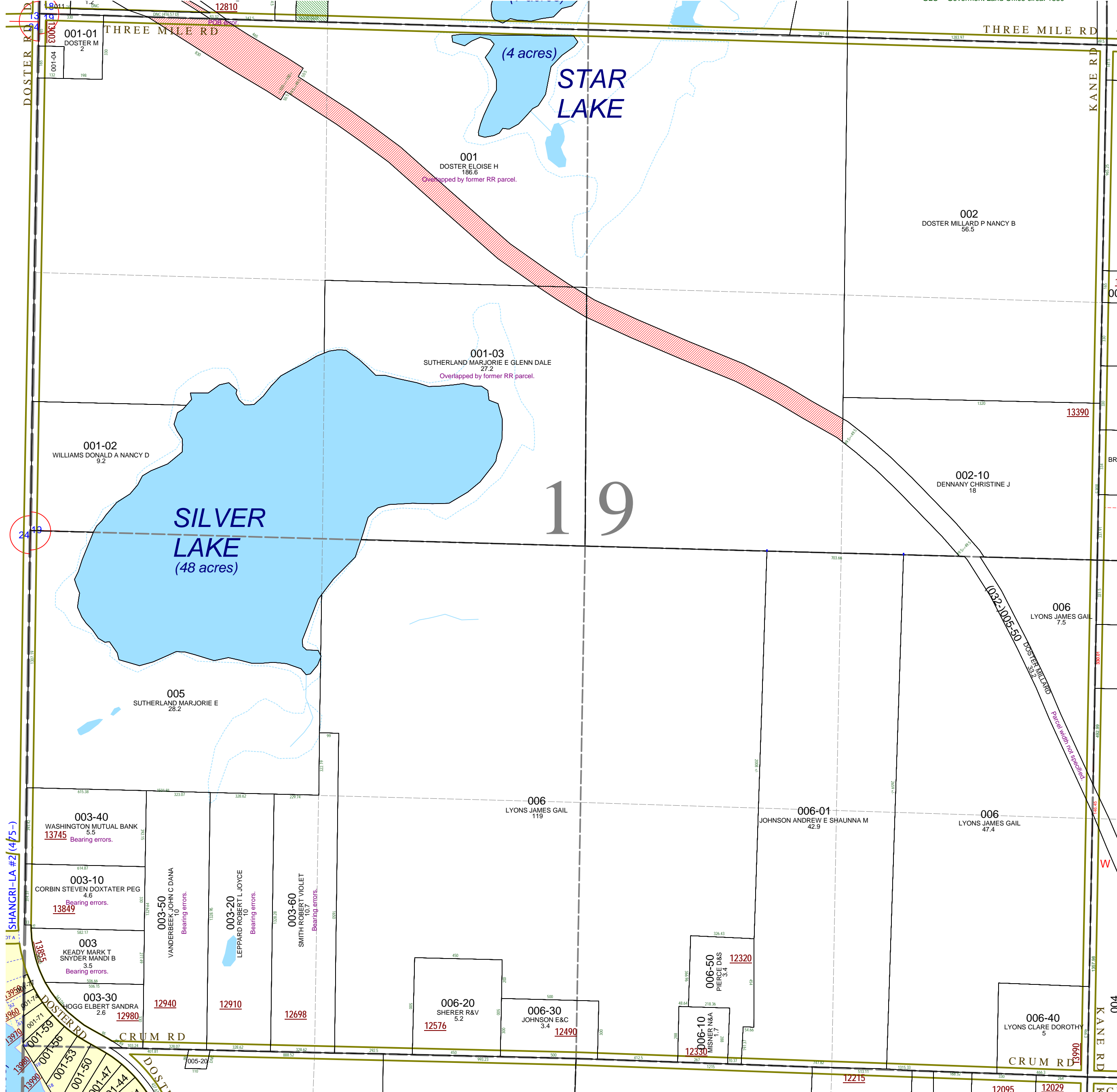


Section 19
08-12-019-
Scale 1"= 400'



November 1996
Revised May 1998
Revised September 2000
Revised August 2002
Revised November 2003
Revised January 2005
Revised April 2006
Revised May 2008

All dimensions are from tax roll unless noted below.
D = dedeed M or S = surveyed
SR = Surveyor's Record prior to 1915
GLO = Government Land Office circa. 1830



08-12-019-001-00 is overlapped by 08-12-032-005-50. There are reverter clauses going all the way back to Stephen Doster but only if the railroad was not built. Also the depot yard was on a separate warranty deed.

08-12-019-001-03 is overlapped by 08-12-032-005-50, but the railroad never took an easement or deed over this property to pass on to George Doster.

08-12-032-005-50 does not indicate its width and should be described as dedeed from various landowners to the railroad when it was put through.

08-12-019-003-60 has the course directions rounded off. See L.1-62.

08-12-019-003-40 has the course directions rounded off. See #20080430-0004666 and survey L.1-62.

08-12-019-003-10 has the course directions rounded off. See L.621-543 & survey L.1-62.

08-12-019-003-50 has numerous course bearing errors. See R#1153413 & survey L.1-62

08-12-019-003-20 has the course directions rounded off. See survey L.1-62.

08-12-019-003-00 has the course directions rounded off. See R#1128783 & survey L.1-62.