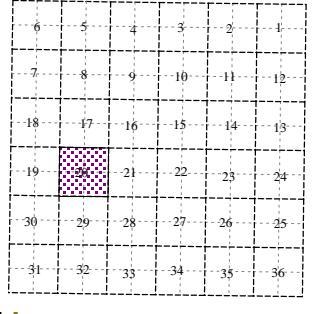
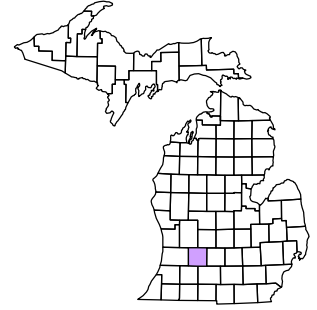


Prairieville Township
T 1 N R 10 W
Barry County
Michigan

Legend:

- Gap: [Green hatched box]
- Overlap: [Red hatched box]
- Address: [Red line]
- Real Property: [Blue line]
- Personal Property: [Green line]
- Approved Split: [Red dashed line]
- Plat: [Blue dashed line]
- Condominium: [Purple dashed line]
- Mobile Home Park: [Red dashed line]



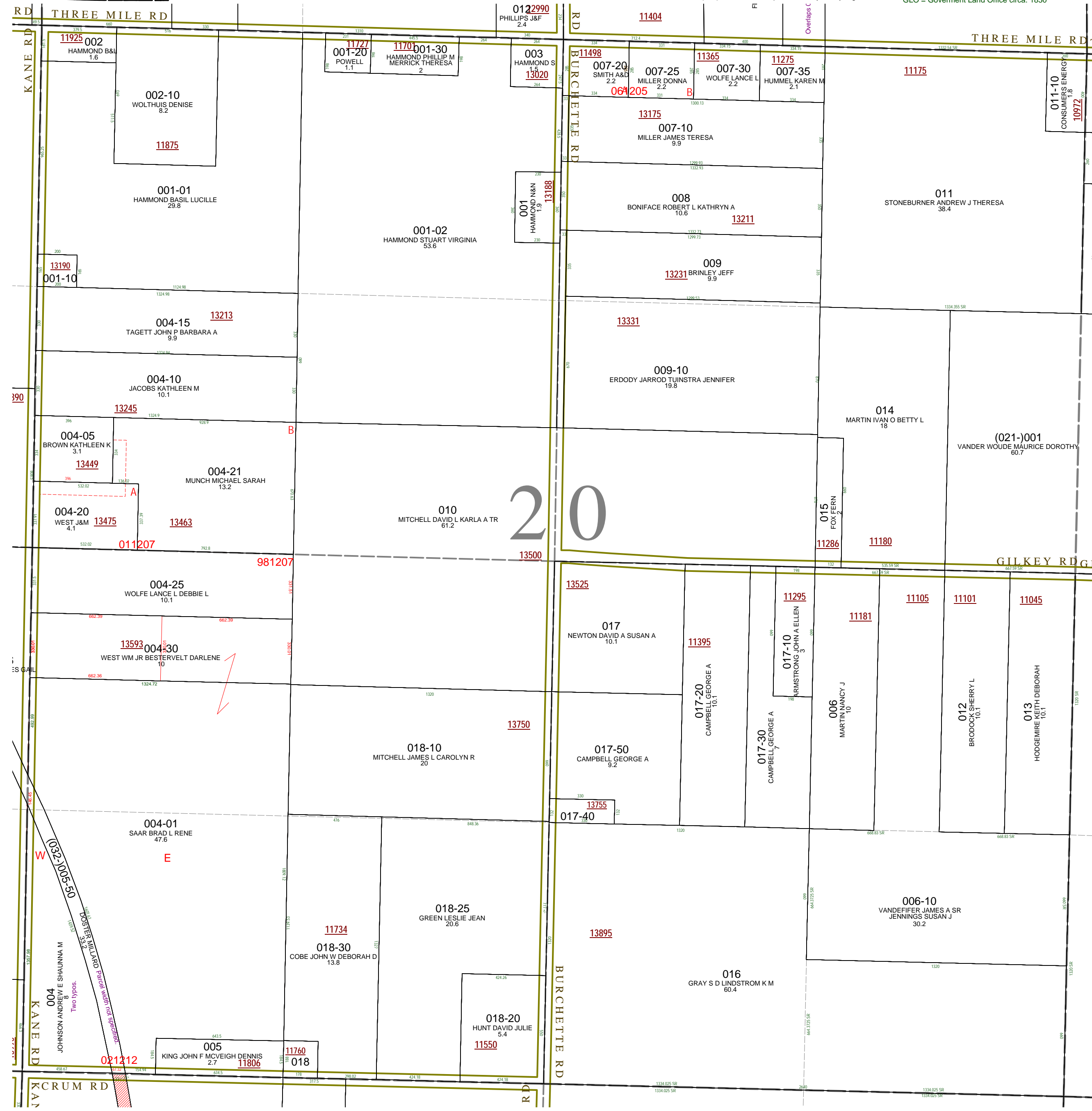
Section 20
08-12-020-
Scale 1"= 400'



October 1996
Revised May 1998
Revised September 2000
Revised August 2002
Revised November 2003
Revised January 2005
Revised April 2006
Revised May 2008

All dimensions are from tax roll unless noted below.
D = deeded M or S = surveyed
SR = Surveyor's Record prior to 1915
GLO = Government Land Office circa. 1830

This tax map was compiled for tax administration purposes from county and township records. It does not represent a land survey.
Barry County Land Information Services
220 West State Street, Hastings MI 49058
(269) 945-1292 or <http://www.barrycounty.org/>



08-12-020-004-00 has two typos and should read as surveyed for split #021212.

08-12-032-005-50 does not indicate its width and should be described as deeded from various landowners to the railroad when it was put through.