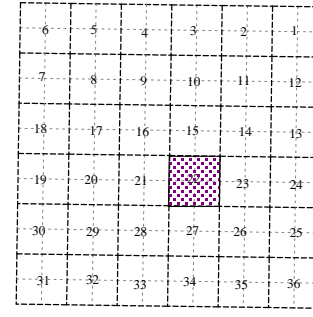
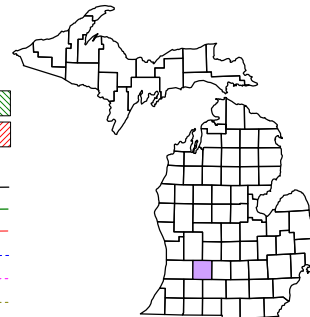
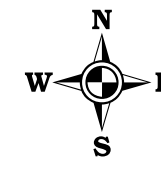


Prairieville Township
T 1 N R 10 W
Barry County
Michigan

- Gap
- Overlap
- Address
- Real Property
- Personal Property
- Approved Split
- Plat
- Condominium
- Mobile Home Park



Section 22
08-12-022-
Scale 1" = 400'

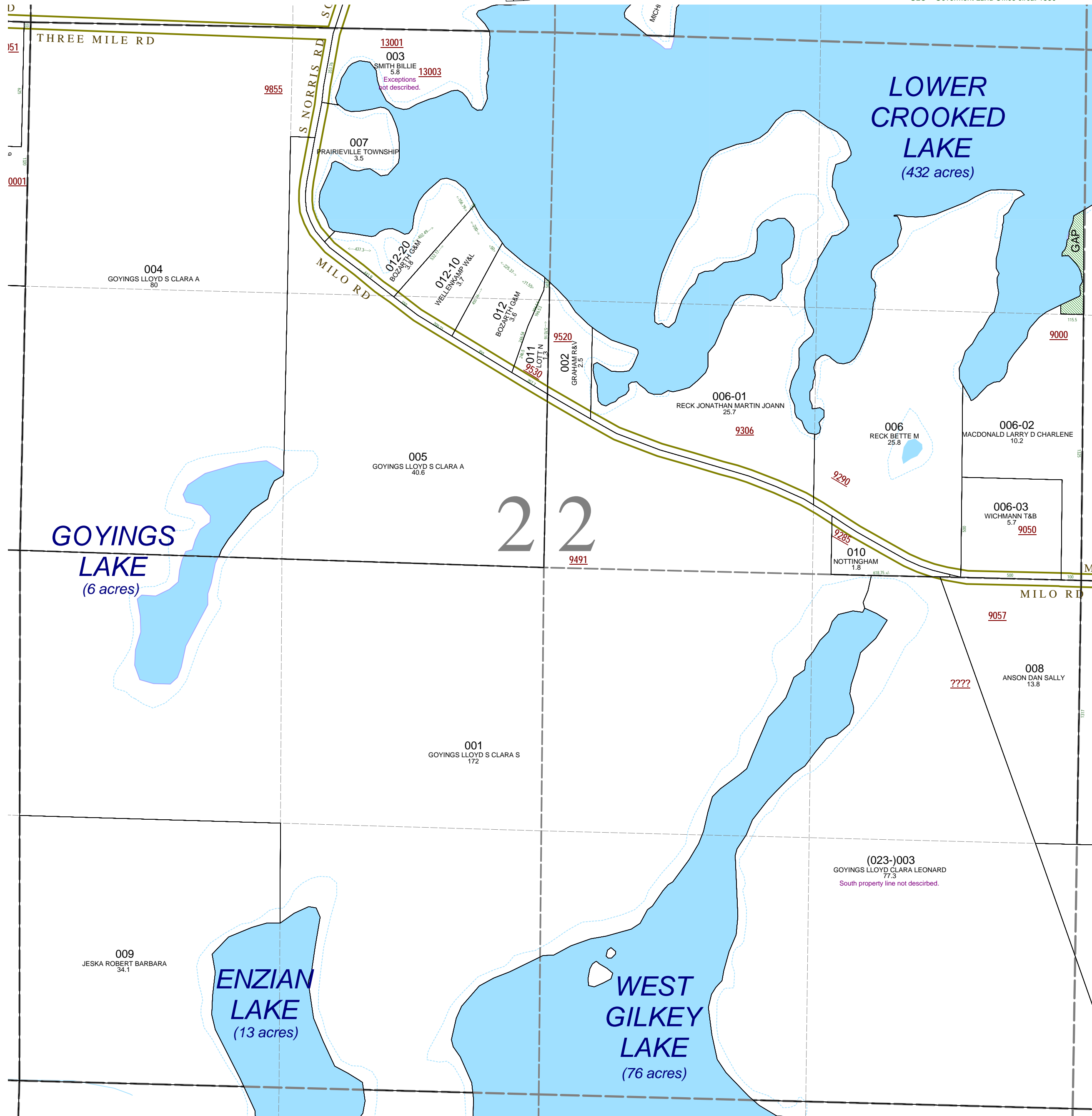


October 1996
Revised May 1998
Revised September 2000
Revised August 2002
Revised November 2003
Revised January 2005
Revised April 2006
Revised May 2008

All dimensions are from tax roll unless noted below.
D = deeded M or S = surveyed
SR = Surveyor's Record prior to 1915
GLO = Government Land Office circa. 1830

This tax map was compiled for tax administration purposes from county and township records. It does not represent a land survey.
Barry County Land Information Services
220 West State Street, Hastings MI 49058
(269) 945-1292 or <http://www.barrycounty.org/>

08-12-022-003-00 needs to write out exceptions quoted as L.40-105 & L.40-621.



GAP owned by Edward Pierson in L.255-53, surveyed in L.1-32 and not conveyed onto Rek in L.412-989.

08-12-023-003-00 needs to specify the precise location of the "Perry" line which appears to be the section line.