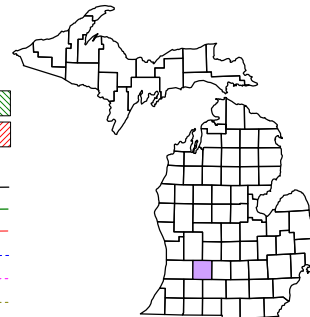


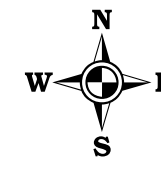
Prairieville Township  
T 1 N R 10 W  
Barry County  
Michigan

- Gap
- Overlap
- Address
- Real Property
- Personal Property
- Approved Split
- Plat
- Condominium
- Mobile Home Park



6	5	4	3	2	1
7	8	9	10	11	12
13	14	15	16	17	18
19	20	21	22	23	24
25	26	27	28	29	30
31	32	33	34	35	36

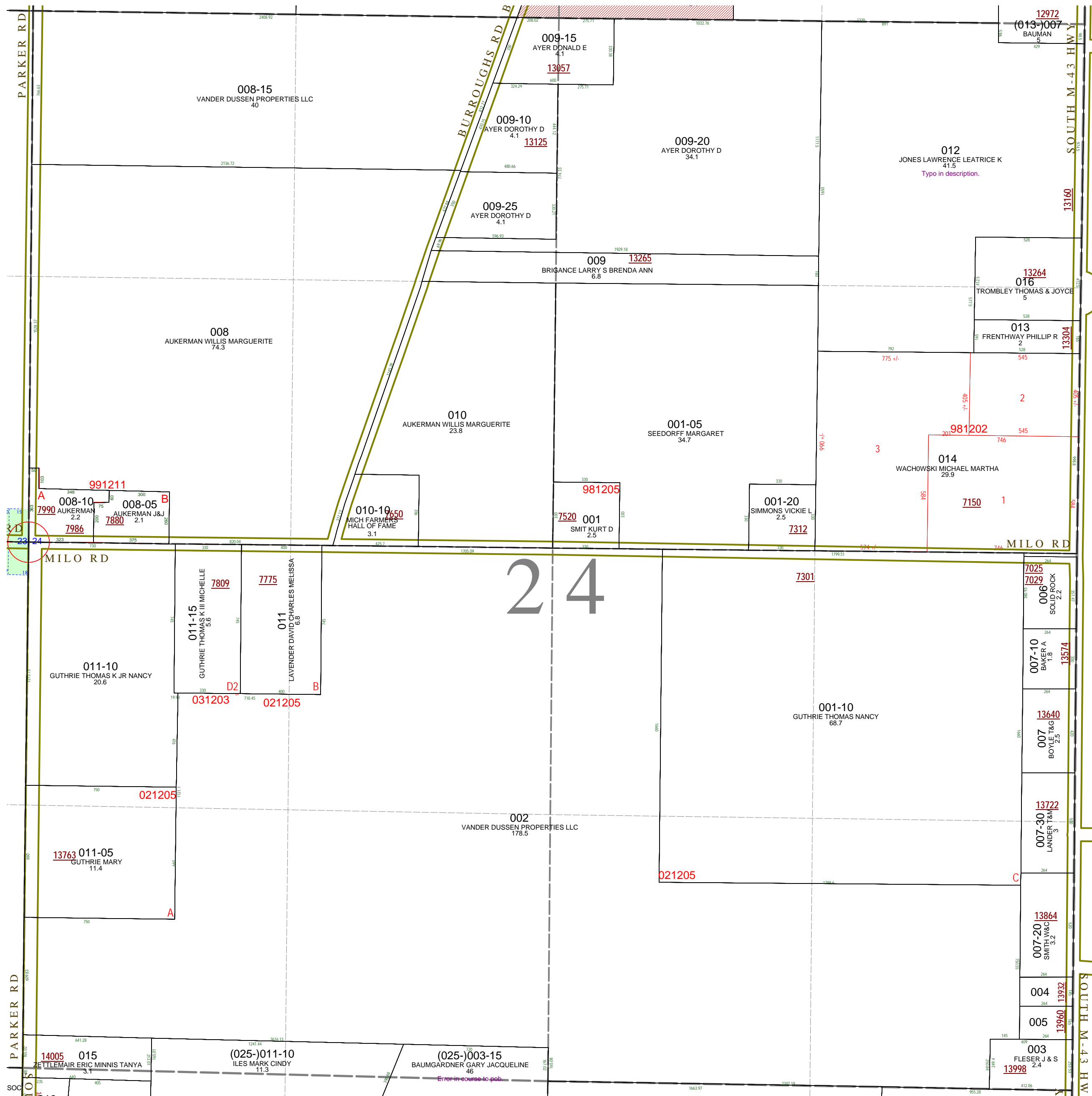
Section 24  
08-12-024-  
Scale 1" = 400'



November 1996  
Revised May 1998  
Revised September 2000  
Revised August 2002  
Revised November 2003  
Revised January 2005  
Revised April 2006  
Revised May 2008

All dimensions are from tax roll unless noted below.  
D = deeded M or S = surveyed  
SR = Surveyor's Record prior to 1915  
GLO = Government Land Office circa. 1830

This tax map was compiled for tax administration purposes from county and township records. It does not represent a land survey.  
Barry County Land Information Services  
220 West State Street, Hastings MI 49058  
(269) 945-1292 or <http://www.barrycounty.org/>



08-12-024-012-00 has one small typo, change "TH 89D 59M W" to "TH N89°59'W".

08-12-025-003-15 has a typo in the first course to point of beginning.

Error in course to pole