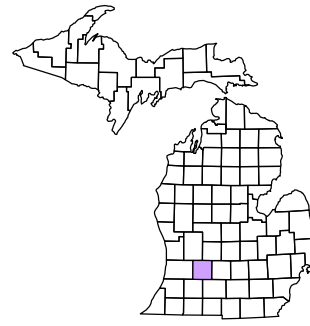


Prairieville Township  
T 1 N R 10 W  
Barry County  
Michigan

- Gap
- Overlap
- Address
- Real Property
- Personal Property
- Approved Split
- Plat
- Condominium
- Mobile Home Park



6	5	4	3	2	1
7	8	9	10	11	12
13	14	15	16	17	18
19	20	21	22	23	24
25	26	27	28	29	30
31	32	33	34	35	36

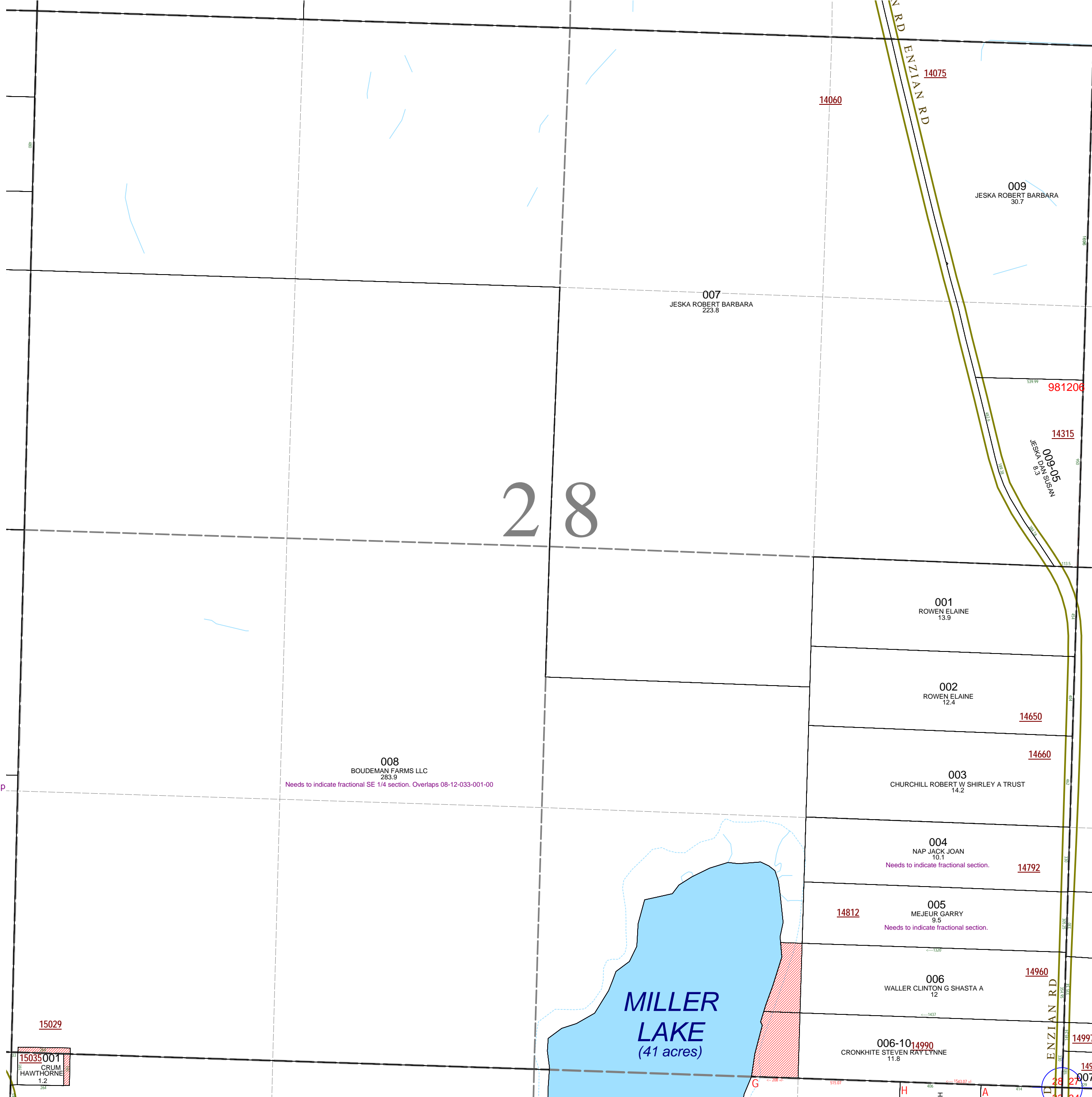
Section 28  
08-12-028-  
Scale 1"= 400'



October 1996  
Revised May 1998  
Revised September 2000  
Revised August 2002  
Revised November 2003  
Revised January 2005  
Revised April 2006  
Revised May 2008

All dimensions are from tax roll unless noted below.  
D = deeded M or S = surveyed  
SR = Surveyor's Record prior to 1915  
GLO = Government Land Office circa. 1830

This tax map was compiled for tax administration purposes from county and township records. It does not represent a land survey.  
Barry County Land Information Services  
220 West State Street, Hastings MI 49058  
(269) 945-1292 or <http://www.barrycounty.org/>



08-12-028-008-00 does not exclude 08-12-033-001-00 and needs to indicate that the E 1/2 of SE 1/4 is fractional according to original GLO map.

Needs to indicate fractional SE 1/4 section. Overlaps 08-12-033-001-00

08-12-028-004-00 needs to indicate the quarter section is fractional according to original GLO map

08-12-028-005-00 needs to indicate the quarter section is fractional according to original GLO map

15035001  
CRUM  
HAWTHORNE  
1.2

14997  
14999  
28 27 07  
14 12 4