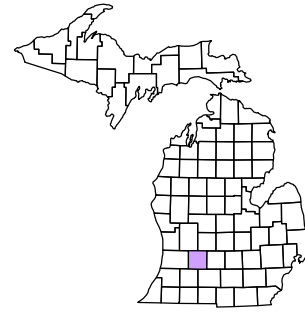


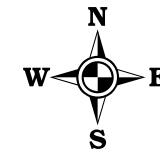
Prairieville Township
T 1 N R 10 W
Barry County
Michigan

- Gap
- Overlap
- Address
- Real Property
- Personal Property
- Approved Split
- Plat
- Condominium
- Mobile Home Park



1	2	3	4	5	6
7	8	9	10	11	12
13	14	15	16	17	18
19	20	21	22	23	24
25	26	27	28	29	30
31	32	33	34	35	36

Section 30
08-12-030-
Scale 1"= 400'

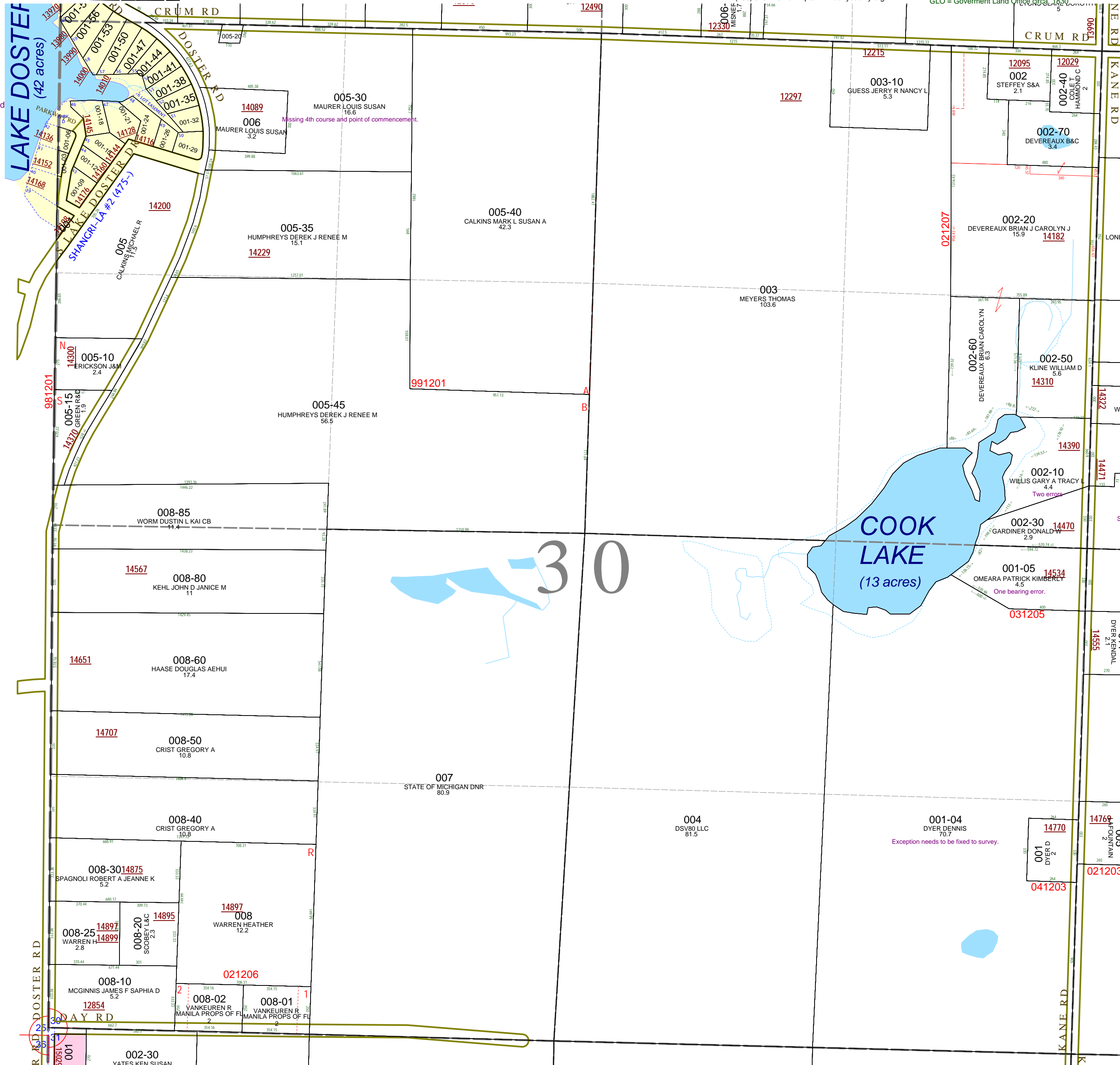


October 1996
Revised May 1998
Revised September 2000
Revised August 2002
Revised November 2003
Revised January 2005
Revised April 2006
Revised May 2008

All dimensions are from tax roll unless noted below.
D = deeded M or S = surveyed
SR = Surveyor's Record prior to 1915
GLO = Government Land Office prior to 1830

This tax map was compiled for tax administration purposes from county and township records. It does not represent a land survey.
Barry County Land Information Services
220 West State Street, Hastings MI 49058
(269) 945-1292 or <http://www.barrycounty.org/>

08-12-030-005-30 is missing the 4th course and missing point of commencement. See split #991201.



08-12-030-002-10 has a bearing error and a point of beginning error. See R#1000079.

08-12-030-001-05 is missing a direction, change "TH 89D 47M 09S E, 594.72 FT" to "TH N89°47'09"E 594.72 FT".

08-12-030-001-04 has an improved exception after initial split due to survey and subsequent deed in R#1165028.

30