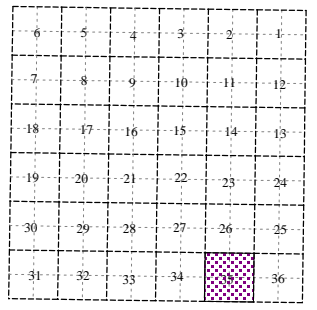
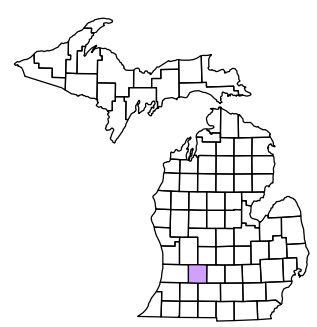
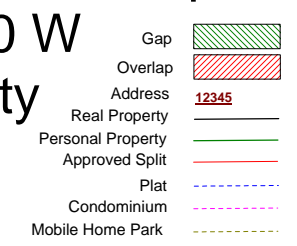


Prairieville Township
T 1 N R 10 W
Barry County
Michigan



Section 35
08-12-035-
Scale 1"= 400'

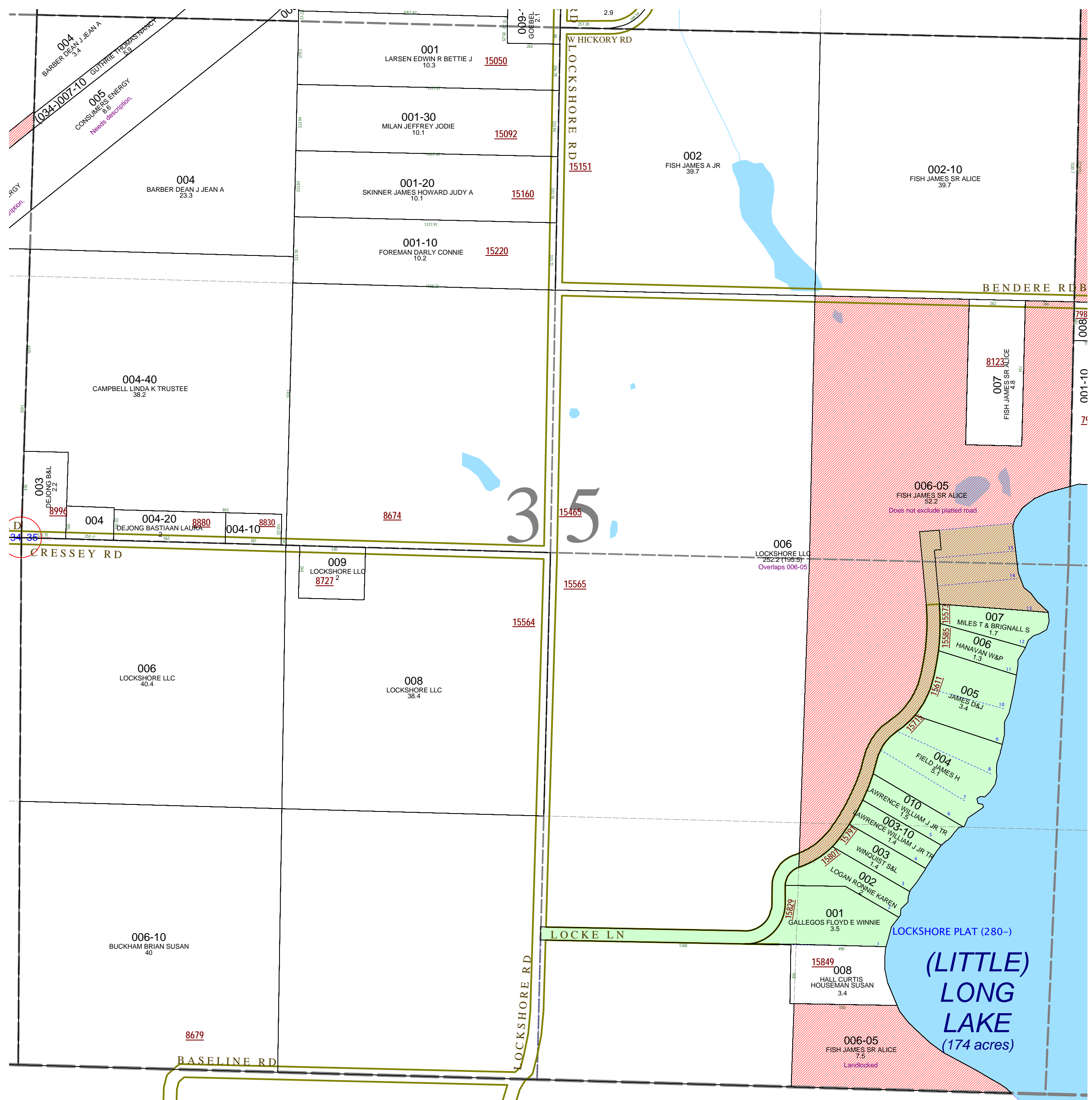


October 1996
Revised May 1998
Revised September 2000
Revised November 2002
Revised January 2005
Revised April 2006
Revised May 2008

All dimensions are from tax roll unless noted below.
D = deeded M or S = surveyed
SR = Surveyor's Record prior to 1915
GLO = Government Land Office circa. 1830

This tax map was compiled for tax administration purposes from county and township records. It does not represent a land survey.
Barry County Land Information Services
220 West State Street, Hastings MI 49058
(269) 945-1292 or <http://www.barrycounty.org/>

08-12-035-005-00 needs to be described as deeded and has been surveyed for consolidating notice of claim in R#1160446.



08-12-035-006-00 is a giant mess with overlaps onto unapproved splits which are landlocked and platted roads. See R#1152099.
08-12-035-006-05 overlaps Lockshore Plat and creates a landlocked parcel with the unapproved split.

35

(LITTLE) LONG LAKE
(174 acres)