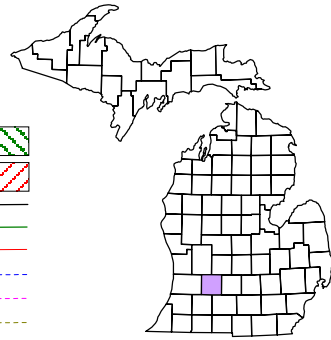


Thornapple Township
T 4 N R 10 W
Barry County
Michigan

- Address 12345
- Gap
- Overlap
- Real Property
- Personal Property
- Approved Split
- Plat
- Condominium
- Mobile Home Park

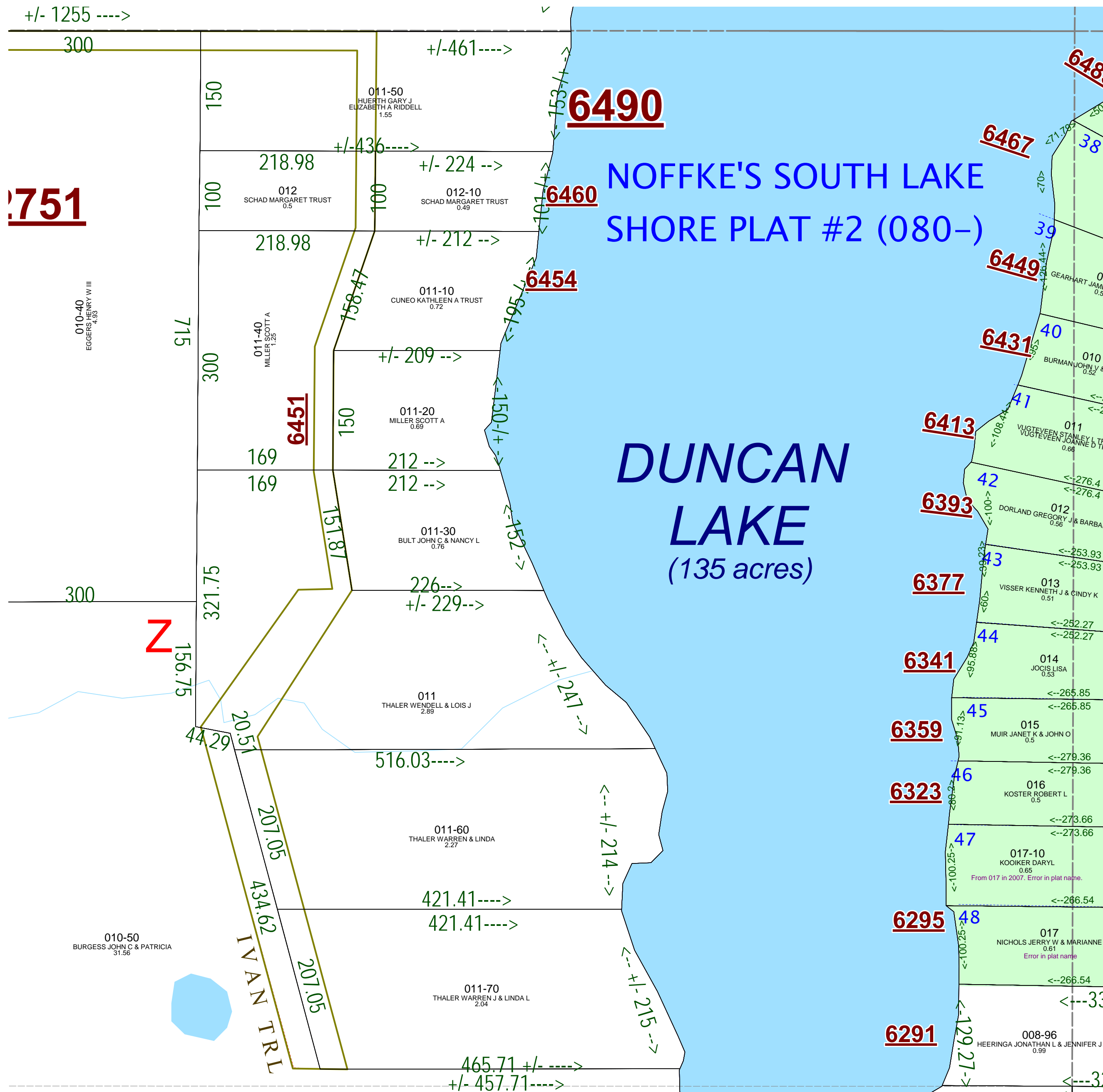


6	5	4	3	2	1
8	8	9	10	11	12
18	17	16	15	14	13
19	20	21	22	23	24
30	29	28	27	26	25
31	32	33	34	35	36

NE 1/4 SW 1/4 Section 7
08-14-007-
Scale 1"= 100'



July 2009
All dimensions are from tax roll unless noted below:
Dimensions in parentheses are calculated
D = deeded versus M or S = surveyed
SR = Surveyor's Record prior to 1915
GLO = Government Land Office circa. 1830
LCRC = Land Corner Recordation Certificate



08-14-080-017-10 plat name is incomplete.
08-14-080-017-00 plat name is incomplete.