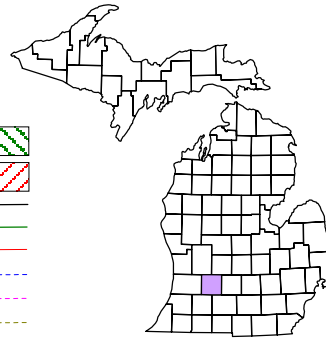


Thornapple Township  
T 4 N R 10 W  
Barry County  
Michigan

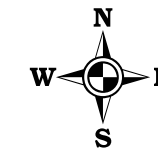
- Address 12345
- Gap
- Overlap
- Real Property
- Personal Property
- Approved Split
- Plat
- Condominium
- Mobile Home Park



6	5	4	3	2	1
8	9	10	11	12	
18	17	16	15	14	13
19	20	21	22	23	24
30	29	28	27	26	25
31	32	33	34	35	36

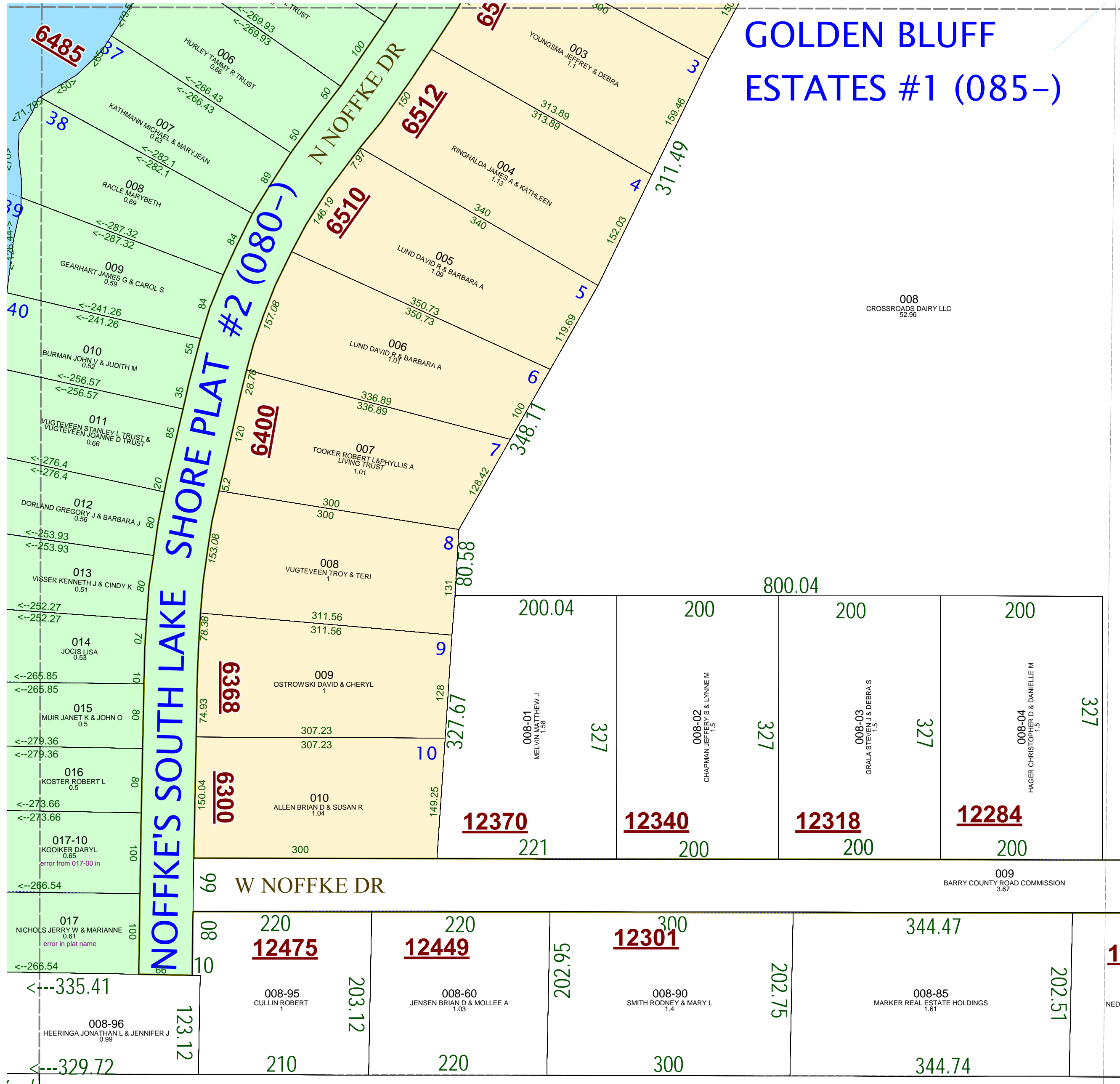
NW 1/4 SE 1/4 Section 7  
08-14-007-  
Scale 1"= 100'

July 2009



This tax map was compiled for tax administration purposes from county and township records. It does not represent a land survey. Barry County Land Information Services, 220 West State Street, Hastings MI 49058 (269) 945-1292 or <http://www.barrycounty.org/>

All dimensions are from tax roll unless noted below:  
Dimensions in parentheses are calculated  
D = deeded M or S = surveyed  
SR = Surveyor's Record prior to 1915  
GLO = Government Land Office circa 1830  
LCRC = Land Corner Recordation Certificate



08-14-080-017-10 plat name is incomplete.  
08-14-080-017-00 plat name is incomplete.