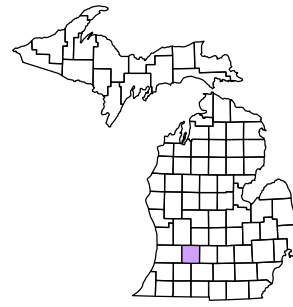


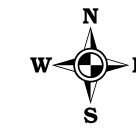
Yankee Springs Township
T 3 N R 10 W
Barry County
Michigan

- Address 1234
- Gap
- Overlap
- Real Property
- Personal Property
- Approved Split
- Plat
- Condominium
- Mobile Home Park



4	5	6	7	8	9	10	11	12
7	8	9	10	11	12	13	14	15
19	17	16	15	14	13	12	11	10
19	20	21	22	23	24	25	26	27
30	29	28	27	26	25	24	23	22
31	32	33	34	35	36	37	38	39

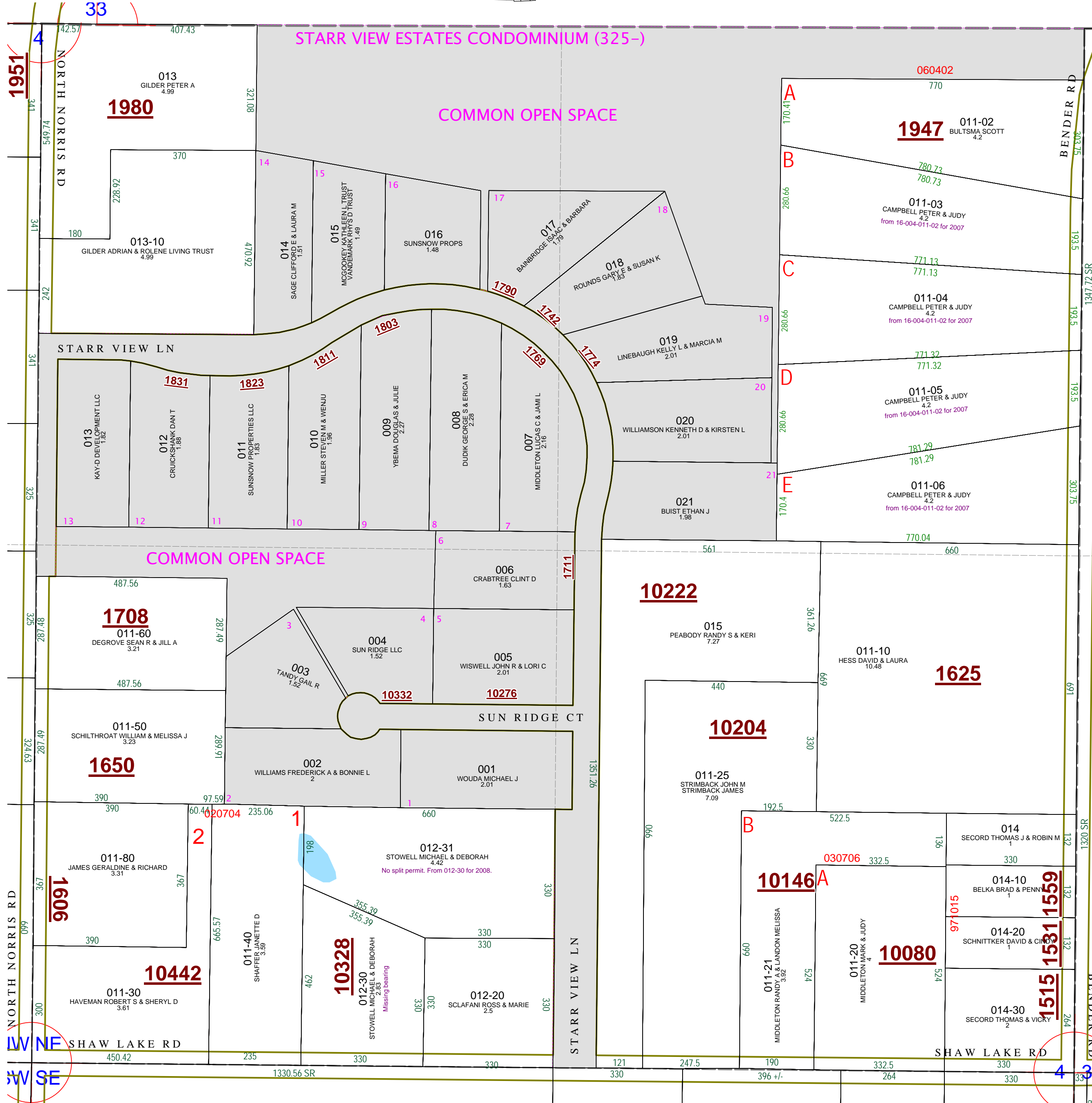
NE 1/4 Section 4
08-16-004-
Scale 1"= 200'



October 2005
Revised April 2006
Revised June 2008

This tax map was compiled for tax administration purposes from county and township records. It does not represent a land survey. Barry County Land Information Services 230 West State Street, Hastings, MI 49058 (269) 945-1292 or <http://www.barrycounty.org/>

All dimensions are from tax roll unless noted below.
D = deeded M or S = surveyed
SR = Surveyor's Record prior to 1915
GLO = Government Land Office circa. 1830



08-16-004-012-30 has a missing bearing, change " TH S ++*01'10" E 355.39" to " TH S69°01'10" E 355.39FT"