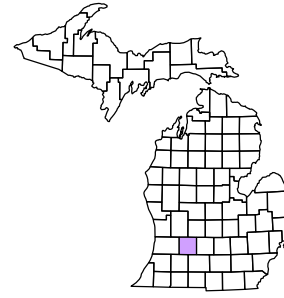


Yankee Springs Township
T 3 N R 10 W
Barry County
Michigan

- Address 1234
- Gap
- Overlap
- Real Property
- Personal Property
- Approved Plat
- Plat
- Condominium
- Mobile Home Park



6	7	8	9	10	11	12
13	14	15	16	17	18	19
20	21	22	23	24	25	26
27	28	29	30	31	32	33
34	35	36	37	38	39	40

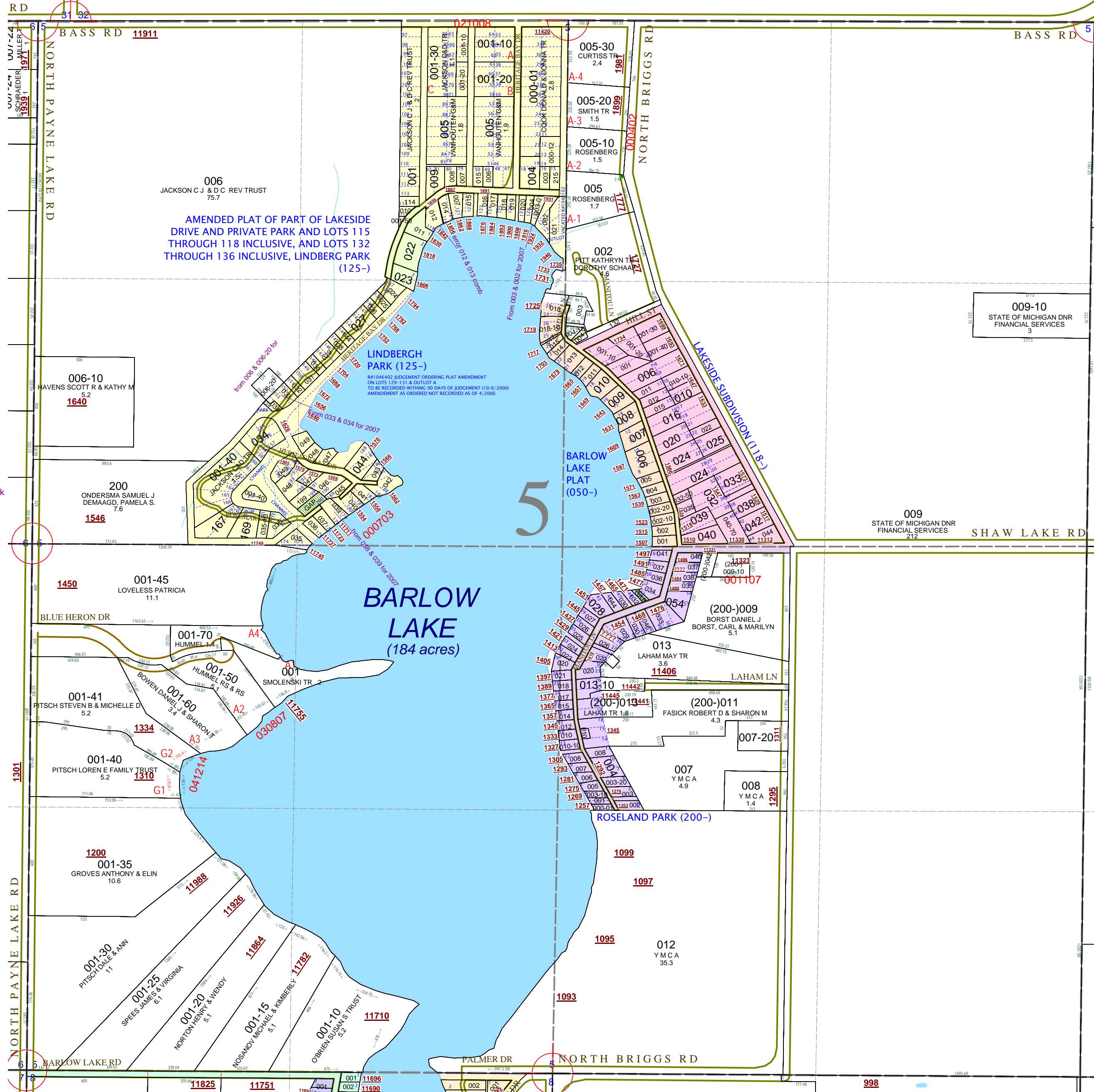
Section 5
08-16-005-
Scale 1"= 400'

This tax map was compiled for tax administration purposes from county and township records. It does not represent a land survey. Barry County Land Information Services 220 West State Street, Hastings MI 49058 (269) 945-1292 or <http://www.barrycounty.org/>



September 1997
Revised January 2000
Revised July 2001
Revised February 2003
Revised April 2004
Revised October 2005
Revised April 2006
Revised June 2008

All dimensions are from tax roll unless noted below.
D = deeded M or S = surveyed
SR = Surveyor's Record prior to 1915
GLO = Government Land Office circa. 1830



AMENDED PLAT OF PART OF LAKESIDE DRIVE AND PRIVATE PARK AND LOTS 115 THROUGH 118 INCLUSIVE, AND LOTS 132 THROUGH 136 INCLUSIVE, LINDBERGH PARK (125-)

LINDBERGH PARK (125-)
#410462 JUDGMENT ORDERING PLAT AMENDMENT ON LOTS 125-131 & OUTLOT A TO BE RECORDED WITHIN 90 DAYS OF JUDGMENT (10/6/2006) AMENDMENT AS ORDERED NOT RECORDED AS OF 4/2006

BARLOW LAKE (184 acres)

5

08-16-125-039-00 was supposed to include back lot which is now a gap from combination of 038, 039 & 200 for 2007.

GAP in lot 51, owned by Walter and Lela Rose in L.171-131.