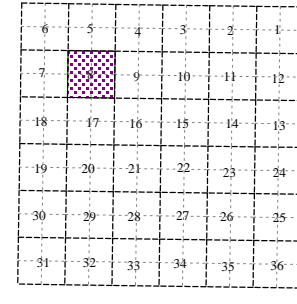
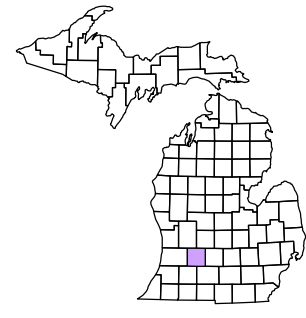
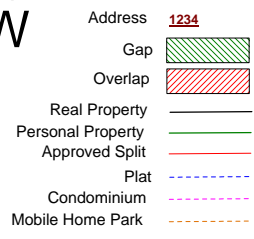


Yankee Springs Township
T 3 N R 10 W
Barry County
Michigan



Section 8
08-16-008-
Scale 1"= 400'

This tax map was compiled for tax administration purposes from county and township records. It does not represent a land survey. Barry County Land Information Services 220 West State Street, Hastings MI 49058 (269) 945-1292 or <http://www.barrycounty.org/>



September 1997
 Revised January 2000
 Revised July 2001
 Revised February 2003
 Revised April 2004
 Revised October 2005
 Revised April 2006
 Revised June 2008

All dimensions are from tax roll unless noted below.
 D = deeded M or S = surveyed
 SR = Surveyor's Record prior to 1915
 GLO = Government Land Office circa. 1830

08-16-055-023-00 has a small error in the second description as it pertains to the distance along Bluff Dr.

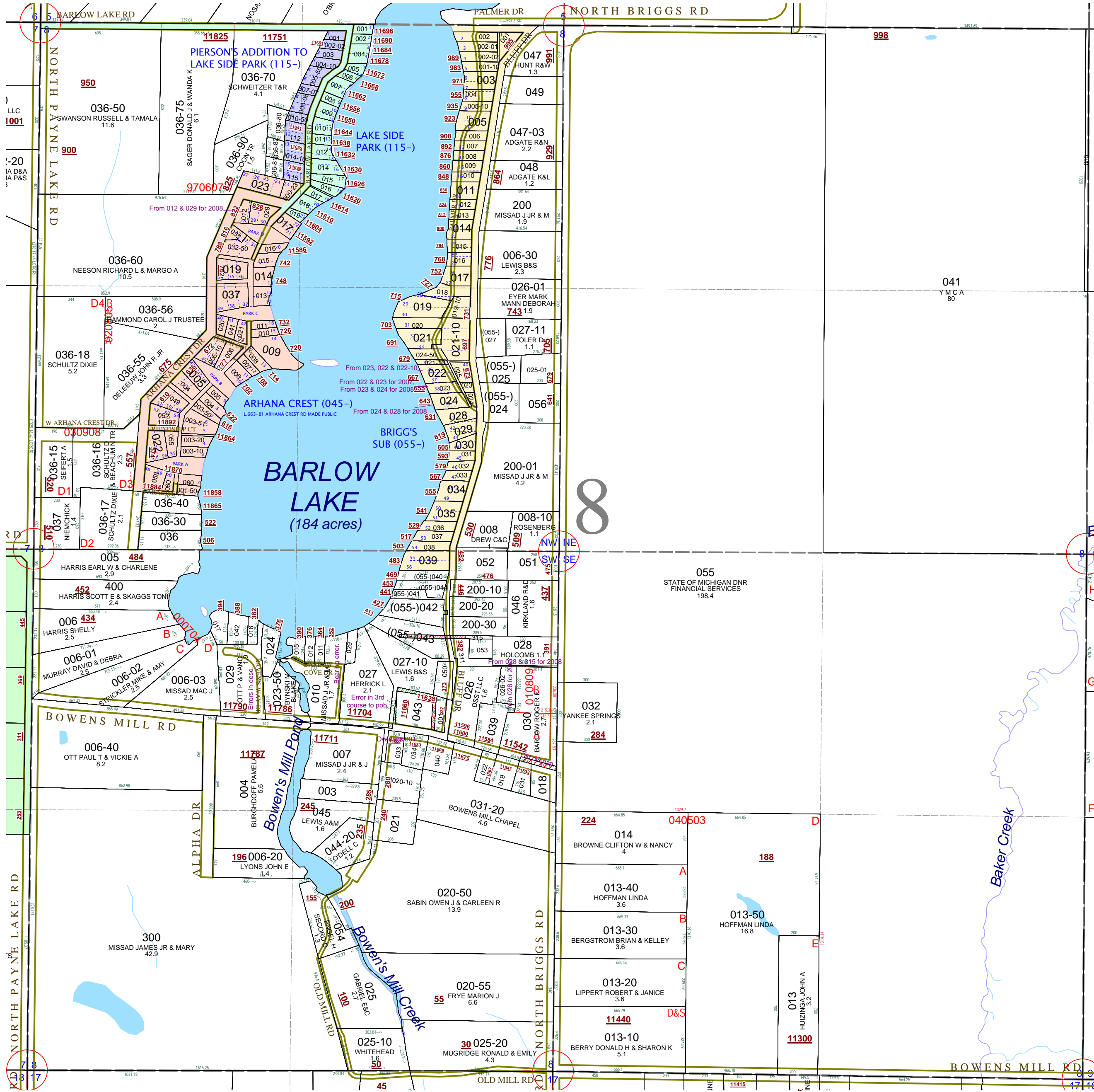
08-16-008-315-00 overlaps (055-)043 because was split out to 028 & 315, but the east-west measurements were not reduced.

08-16-008-010-00 has an incorrect bearing on line after headgate.

08-16-008-027-00 has an error in third course to point of beginning. See R#1123788.

08-16-008-029-00 is missing a lot of punctuation and has some measurements shaved off.

08-16-008-043-00 overlaps 001 and has been surveyed. See L.641-860.



BOWENS MILL RD