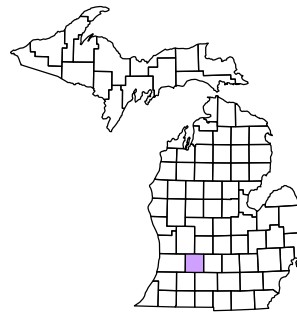


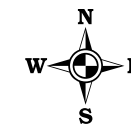
Yankee Springs Township  
T 3 N R 10 W  
Barry County  
Michigan

Address	1224
Gap	[Symbol]
Overlap	[Symbol]
Real Property	[Symbol]
Personal Property	[Symbol]
Approved Plat	[Symbol]
Split	[Symbol]
Condominium	[Symbol]
Mobile Home Park	[Symbol]



1	2	3	4	5	6
7	8	9	10	11	12
13	14	15	16	17	18
19	20	21	22	23	24
25	26	27	28	29	30
31	32	33	34	35	36

SW 1/4 Section 8  
08-16-008-  
Scale 1"= 200'



January 2000  
Revised July 2001  
Revised February 2003  
Revised April 2004  
Revised October 2005  
Revised April 2006  
Revised June 2008

All dimensions are from tax roll unless noted below.  
D = deeded M or S = surveyed  
SR = Surveyor's Record prior to 1915  
GLO = Government Land Office circa. 1830

This tax map was compiled for tax administration purposes from county and township records. It does not represent a land survey.  
Barry County Land Information Services  
220 West State Street, Hastings MI 49931  
(269) 945-1292 or http://www.barrycounty.org/

08-16-008-029-00 is missing a lot of punctuation and has some measurements shaved off.

08-16-055-044-00 should indicate the southerly directions are along the lake, not due south.

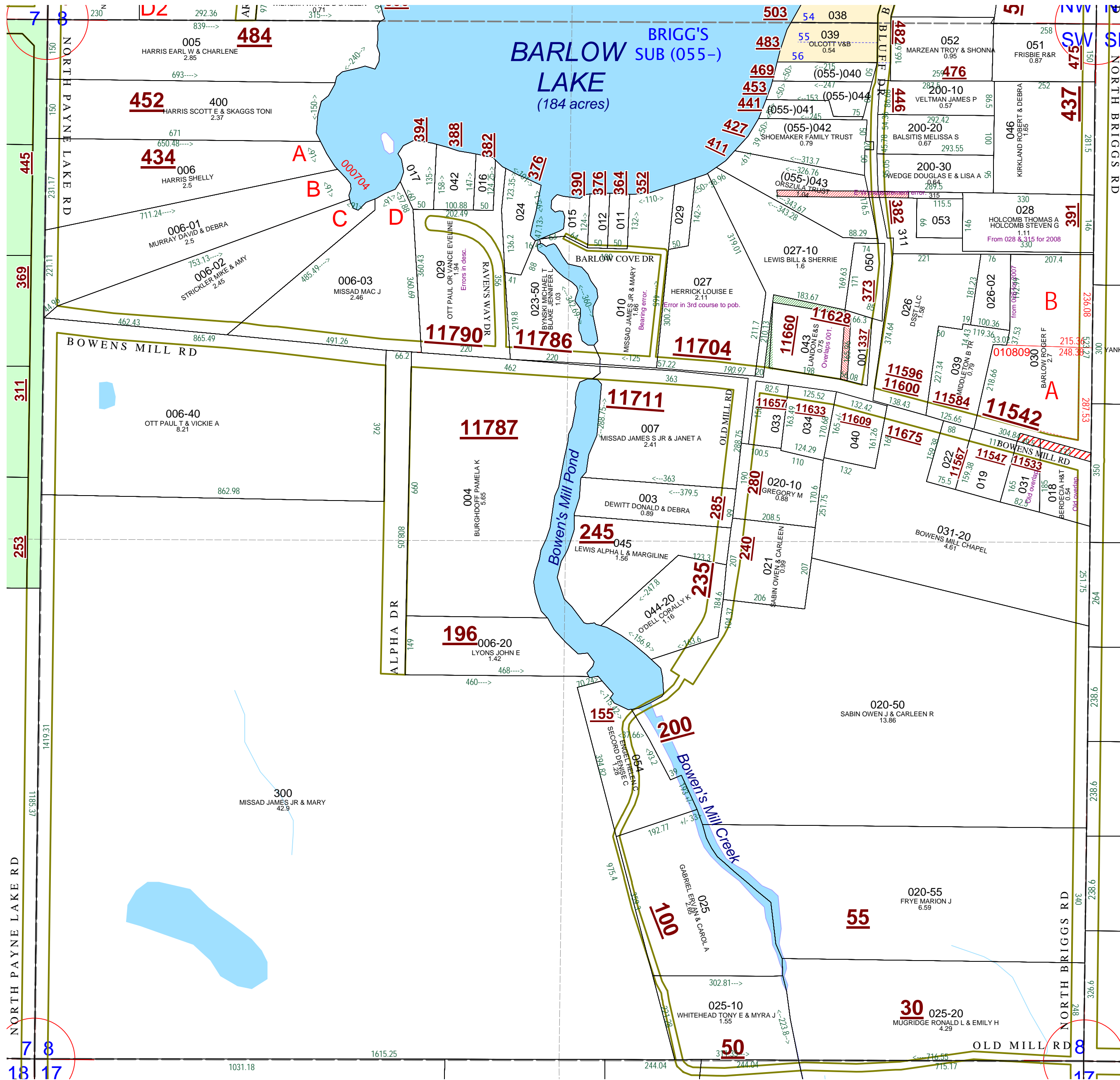
08-16-055-041-00 should indicate the southerly directions are along the lake, not due south.

08-16-008-315-00 overlaps (055-)043 because was split out to 028 & 315, but the east-west measurements where not reduced.

08-16-008-027-00 has an error in third course to point of beginning. See R#1123788.

08-16-008-010-00 has an incorrect bearing on line after headgate.

08-16-008-043-00 overlaps 001 and has been surveyed. See L.641-860.



7 8  
18 17

7 8  
17