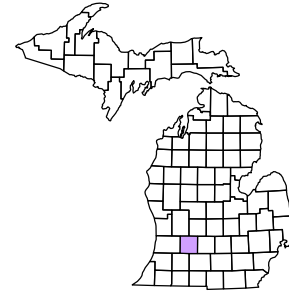
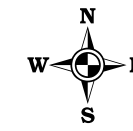


Yankee Springs Township
T 3 N R 10 W
Barry County
Michigan



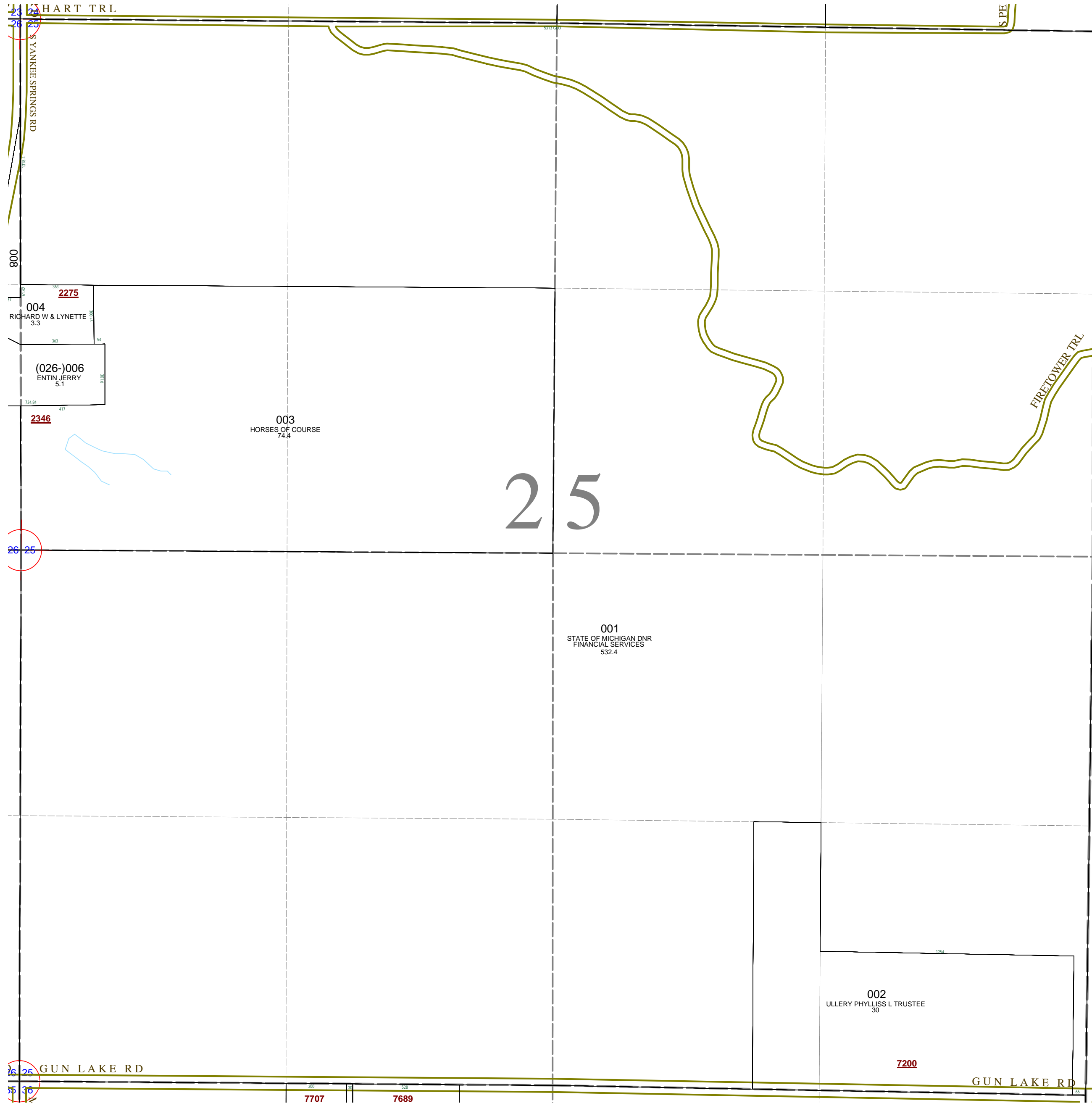
6	5	4	3	2	1
7	8	9	10	11	12
13	14	15	16	17	18
19	20	21	22	23	24
25	26	27	28	29	30
31	32	33	34	35	36

Section 25
08-16-025-
Scale 1"= 400'



September 1997
Revised January 2000
Revised July 2001
Revised February 2003
Revised April 2004
Revised October 2005
Revised April 2006
Revised June 2008
All dimensions are from tax roll
unless noted below.
D = deeded M or S = surveyed
SR = Surveyor's Record prior to 1915
GLO = Government Land Office circa. 1830

This tax map was compiled for tax administration purposes from county and township records. It does not represent a land survey.
Barry County Land Information Services
220 West State Street, Hastings MI 49058
(269) 945-1292 or <http://www.barrycounty.org/>



25

GUN LAKE RD

GUN LAKE RD

7707

7689

7200

26 25

26 25

800

21 25

22 25

23 25

24 25

25 25

26 25

27 25

28 25

29 25

30 25

31 25

32 25

33 25

34 25

35 25

36 25

37 25

38 25

39 25

40 25

41 25

42 25

43 25

44 25

45 25

46 25

47 25

48 25

49 25

50 25

51 25

52 25

53 25

54 25

55 25

56 25

57 25

58 25

59 25

60 25