

Yankee Springs Township T 3 N R 10 W Barry County Michigan

Address 1234

Gap

Overlap

Real Property

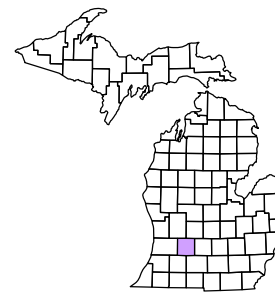
Personal Property

Approved Split

Plat

Condominium

Mobile Home Park



1	2	3	4	5	6
7	8	9	10	11	12
13	14	15	16	17	18
19	20	21	22	23	24
25	26	27	28	29	30
31	32	33	34	35	36

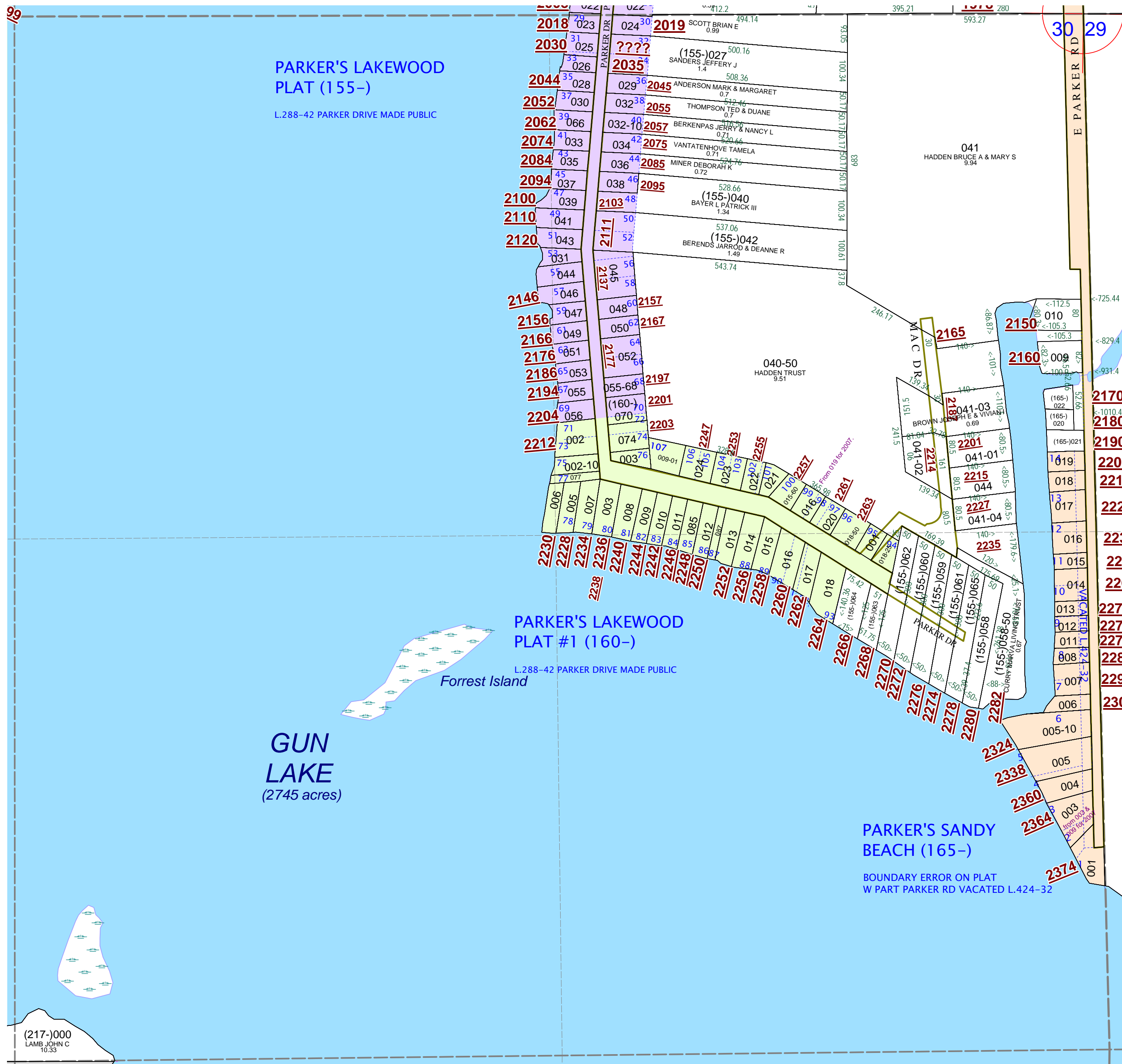
NE 1/4 Section 30 08-16-030- Scale 1"= 200'

This tax map was compiled for tax administration purposes from county and township records. It does not represent a land survey.
Barry County Land Information Services
220 West State Street, Hastings MI 49058
(269) 945-1292 or <http://www.barrycounty.org/>



January 2000
Revised July 2001
Revised February 2003
Revised April 2004
Revised October 2005
Revised April 2006
Revised June 2008

All dimensions are from tax roll unless noted below.
D = deeded M or S = surveyed
SR = Surveyor's Record prior to 1915
GLO = Government Land Office circa. 1830



(217-000
LAMB JOHN C
10.33