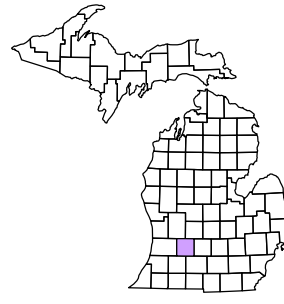


Yankee Springs Township  
T 3 N R 10 W  
Barry County  
Michigan

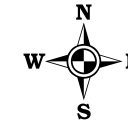
- Address 1234
- Gap
- Overlap
- Real Property
- Personal Property
- Approved Split
- Plat
- Condominium
- Mobile Home Park



6	5	4	3	2	1
7	8	9	10	11	12
18	17	16	15	14	13
19	20	21	22	23	24
30	29	28	27	26	25
31	32	33	34	35	36

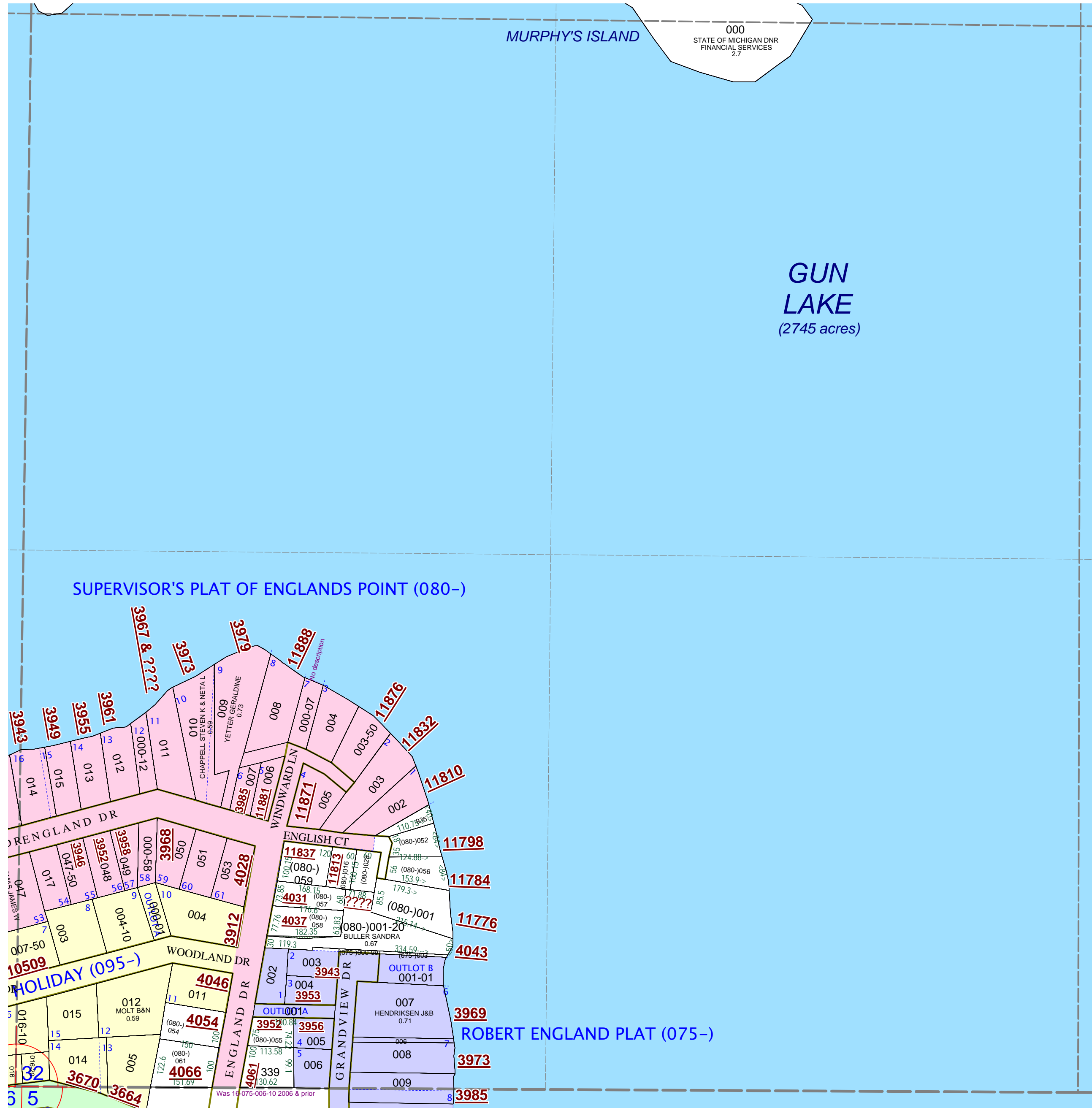
SW 1/4 Section 32  
08-16-032-  
Scale 1"= 200'

This tax map was compiled for tax administration purposes from county and township records. It does not represent a land survey.  
Barry County Land Information Services  
220 West State Street, Hastings MI 49058  
(269) 945-1292 or <http://www.barrycounty.org/>



January 2000  
Revised July 2001  
Revised February 2003  
Revised April 2004  
Revised October 2005  
Revised April 2006  
Revised June 2008

All dimensions are from tax roll unless noted below.  
D = deeded M or S = surveyed  
SR = Surveyor's Record prior to 1915  
GLO = Government Land Office circa. 1830



08-16-080-000-07 has no description.