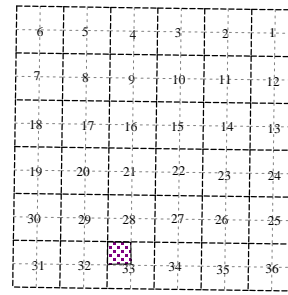
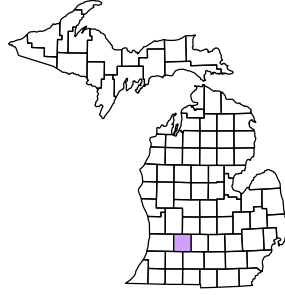
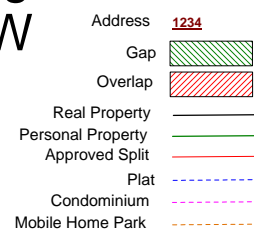


Yankee Springs Township
T 3 N R 10 W
Barry County
Michigan



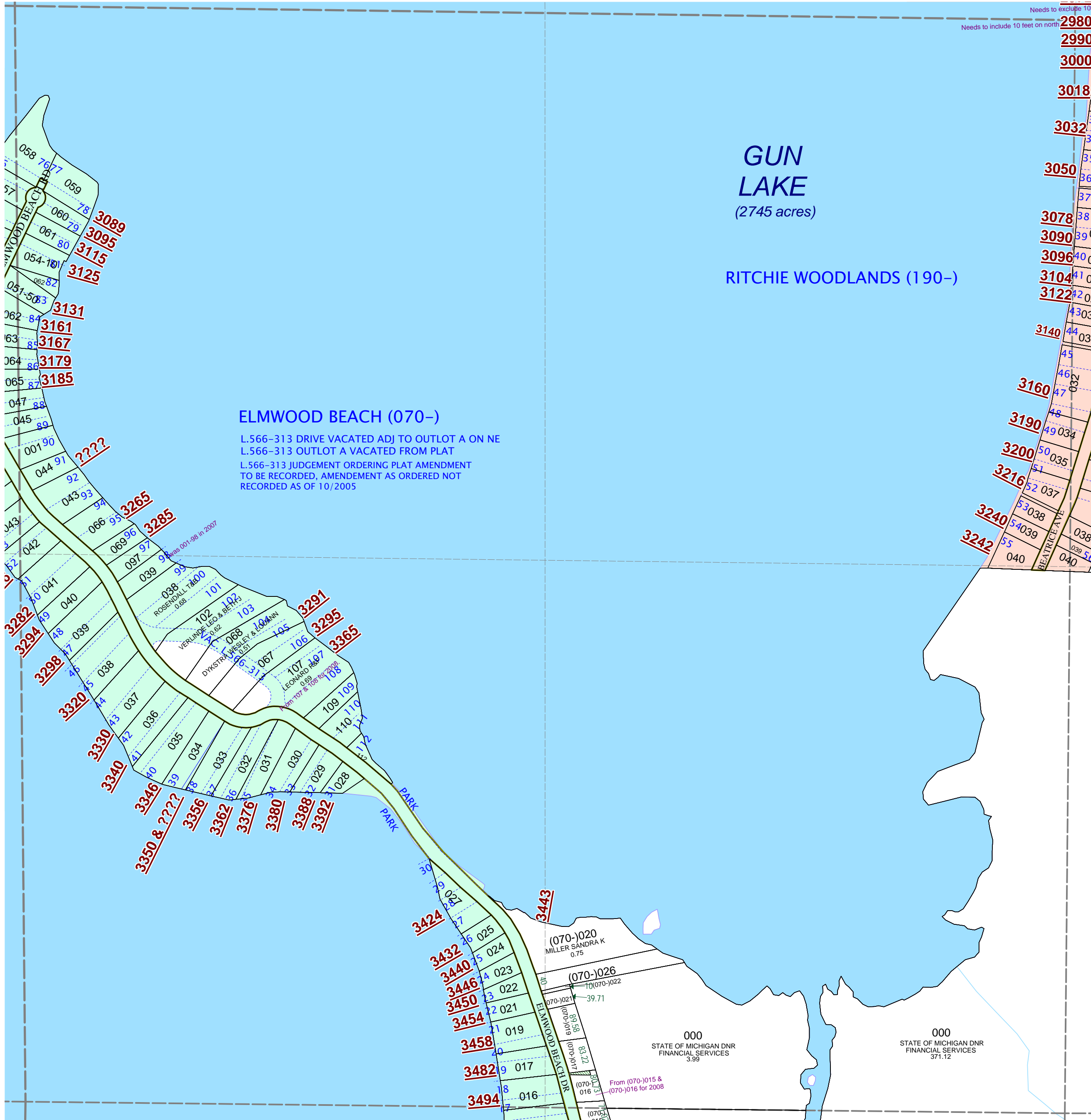
NW 1/4 Section 33
08-16-033-
Scale 1" = 200'



January 2000
Revised July 2001
Revised February 2003
Revised April 2004
Revised October 2005
Revised April 2006
Revised June 2008

This tax map was compiled for tax administration purposes from county and township records. It does not represent a land survey. Barry County Land Information Services 220 West State Street, Hastings MI 49058 (269) 945-1292 or http://www.barrycounty.org/

All dimensions are from tax roll unless noted below. D = deeded M or S = surveyed SR = Surveyor's Record prior to 1915 GLO = Government Land Office circa. 1830



08-16-070-017-00 needs to include gap parcel to its north.