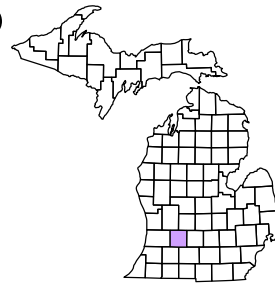


Yankee Springs Township  
T 3 N R 10 W  
Barry County  
Michigan

- Address 1234
- Gap
- Overlap
- Real Property
- Personal Property
- Approved Split
- Plat
- Condominium
- Mobile Home Park



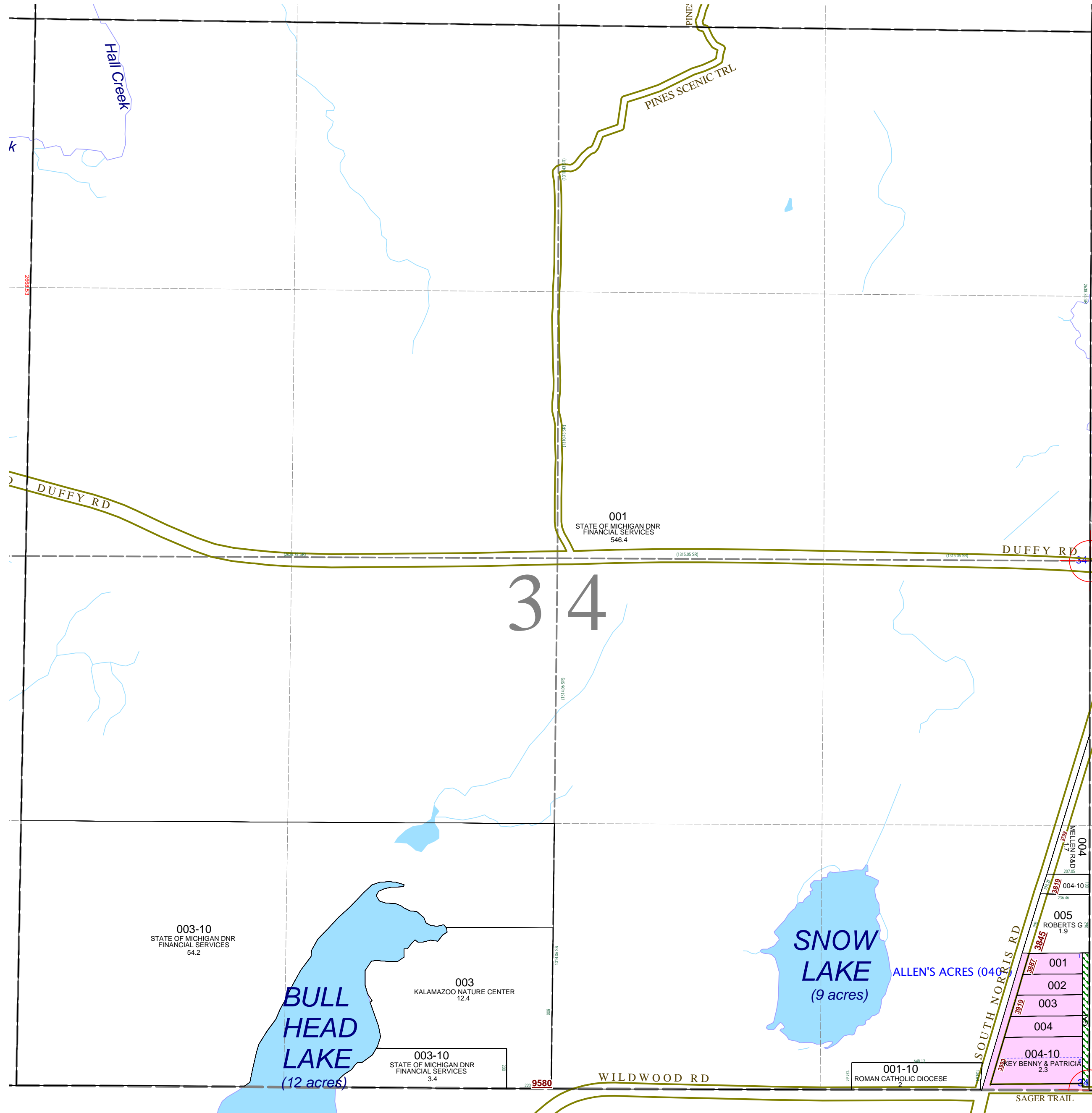
6	5	4	3	2	1
7	8	9	10	11	12
13	14	15	16	17	18
19	20	21	22	23	24
25	26	27	28	29	30
31	32	33	34	35	36

Section 34  
08-16-034-  
Scale 1" = 400'

This tax map was compiled for tax administration purposes from county and township records. It does not represent a land survey. Barry County Land Information Services 220 West State Street, Hastings MI 49058 (269) 945-1292 or <http://www.barrycounty.org/>



September 1997  
Revised January 2000  
Revised July 2001  
Revised February 2003  
Revised April 2004  
Revised October 2005  
Revised April 2006  
Revised June 2008  
All dimensions are from tax roll unless noted below.  
D = deeded M or S = surveyed  
SR = Surveyor's Record prior to 1915  
GLO = Government Land Office circa. 1830



GAP owned by Lawrence E. & Marta Jean Allen in L.251-586.