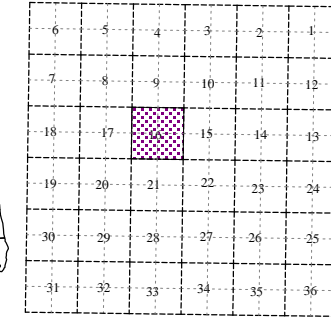
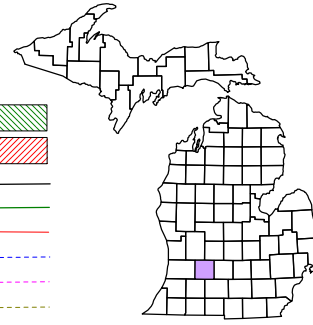


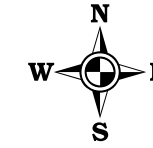
Castleton Township
T 3 N R 7 W
Barry County
Michigan

- Address 1234
- Gap
- Overlap
- Real Property
- Personal Property
- Approved Split
- Plat
- Condominium
- Mobile Home Park



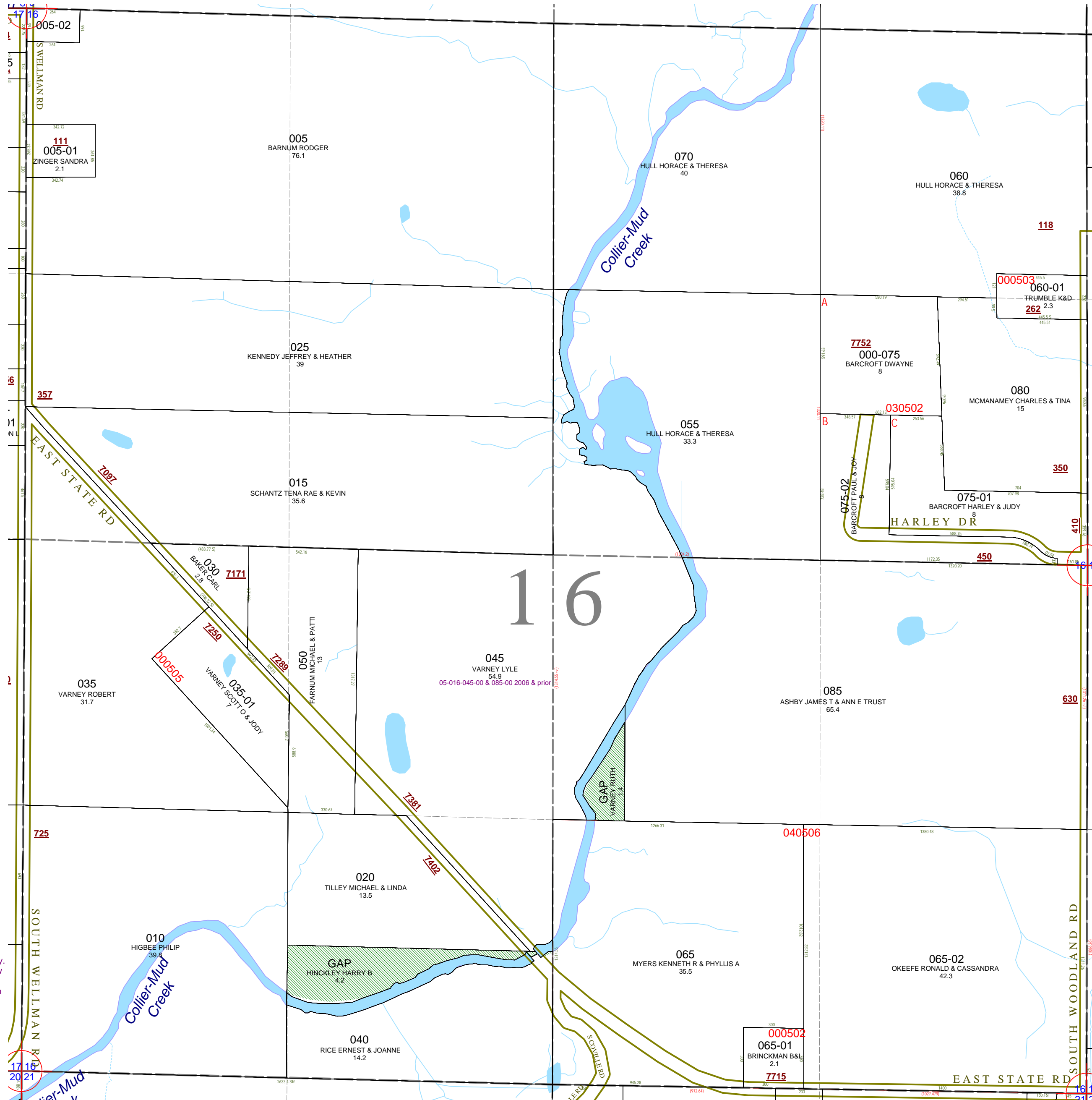
Section 16
08-05-016-

For tax years 2005 & prior parcel numbers had leading "000" after section unless otherwise noted.
Scale 1" = 400'
This tax map was compiled for tax administration purposes from county and township records. It does not represent a land survey.
Barry County Land Information Services
220 West State Street, Hastings MI 49058
(269) 945-1292 or <http://www.barrycounty.org/>



October 1997
Revised October 1999
Revised February 2001
Revised January 2003
Revised June 2004
Revised May 2005
Revised February 2007
Revised January 2009

All dimensions are from tax roll unless noted below.
D = deeded M or S = surveyed
SR = Surveyor's Record prior to 1915
GLO = Government Land Office circa. 1830



GAP was not conveyed to Rice and has a different chain of title than either Rice or Varney. This property was once attached to what is now Higbee, but was not conveyed to Higbee. The last deeds of record are for Harry B. Hinckley in L.146-162 & L.146-196.

GAP owned by Ruth Varney (survivor of Owen) on a deed from Belle Mix recorded in L.149-439 on 4/24/1933. Not sold onto Brewer in L.456-463. Looks like they used a oil & gas lease description to sell on the property to Brewer, which didn't include the whole piece.