

THORNAPPLE	IRVING	CARLTON	WOODLAND
YANKEE SPRINGS	RUTLAND	HASTINGS	MAPLE GROVE
ORANGEVILLE	HOPE	BALTIMORE	ASSYRIA
PRAIRIEVILLE	DELSON	BARRY	JOHNSTOWN

Castleton Township  
T 3 N R 7 W  
Barry County  
Michigan

- Address 1234
- Gap
- Overlap
- Real Property
- Personal Property
- Approved Split
- Plat
- Condominium
- Mobile Home Park

6	5	4	3	2	1
7	8	9	10	11	12
13	14	15	16	17	18
19	20	21	22	23	24
25	26	27	28	29	30
31	32	33	34	35	36

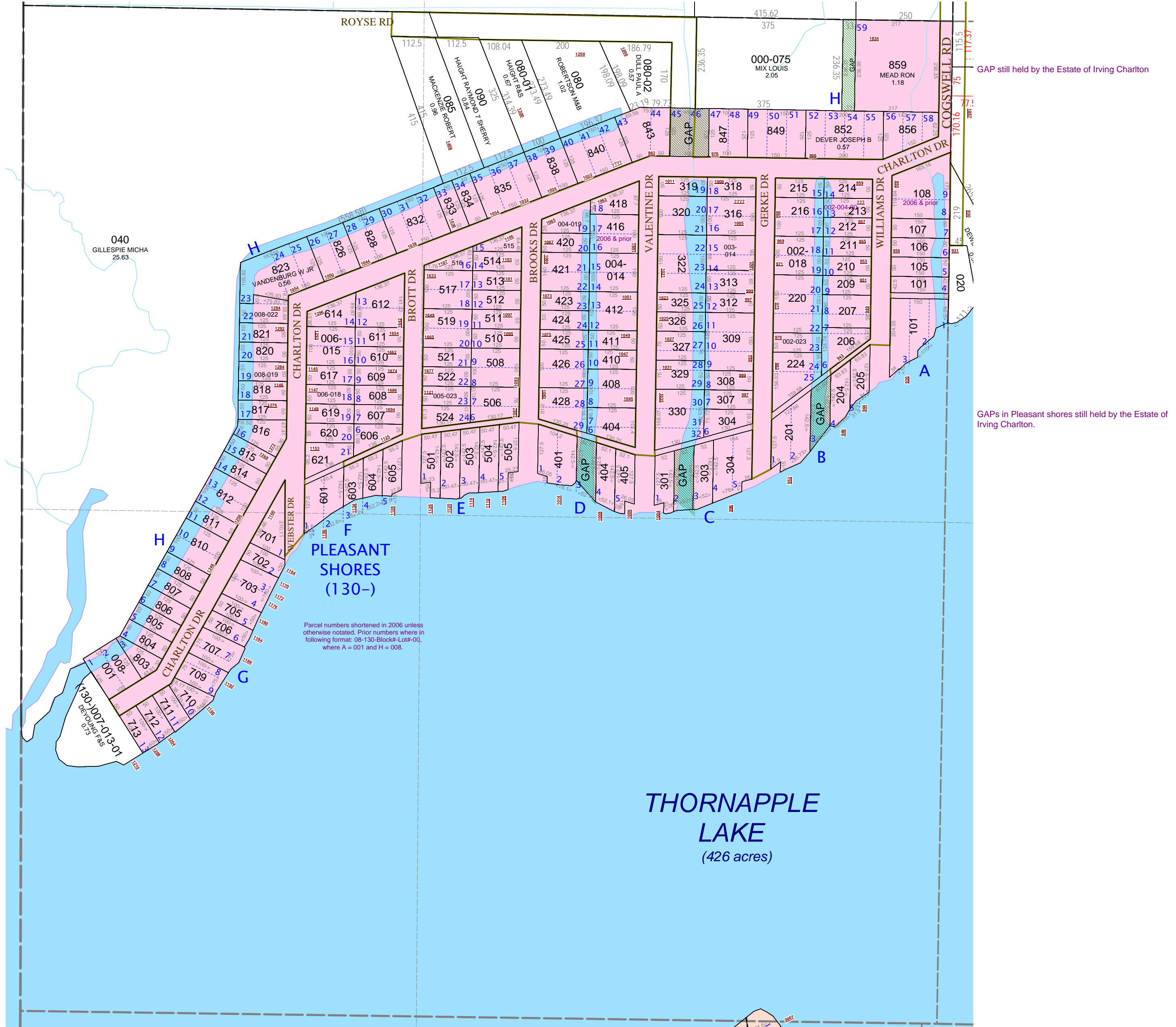
SW 1/4 Section 19  
08-05-019-  
Scale 1"= 200'

This tax map was compiled for tax administration purposes from county and township records. It does not represent a land survey. Barry County Land Information Services 220 West State Street, Hastings MI 49058 (269) 945-1292 or <http://www.barrycounty.org/>



October 1999  
Revised February 2001  
Revised January 2003  
Revised June 2004  
Revised May 2005  
Revised February 2007  
Revised January 2009

All dimensions are from tax roll unless noted below.  
D = deeded M or S = surveyed  
SR = Surveyor's Record prior to 1915  
GLO = Government Land Office circa. 1830



GAP still held by the Estate of Irving Charlton

GAPs in Pleasant shores still held by the Estate of Irving Charlton.

Parcel numbers shortened in 2006 unless otherwise notated. Prior numbers where in following format: 08-130-Block#-Lot#-00, where A = 001 and H = 008.

THORNAPPLE LAKE  
(426 acres)