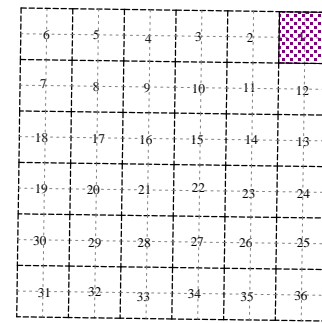
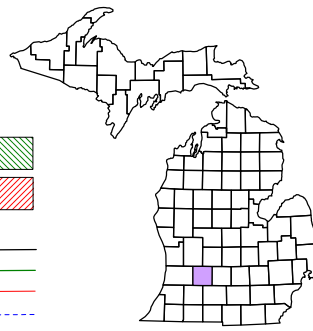
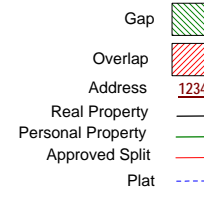


Assyria Township  
T 1 N R 7 W  
Barry County  
Michigan



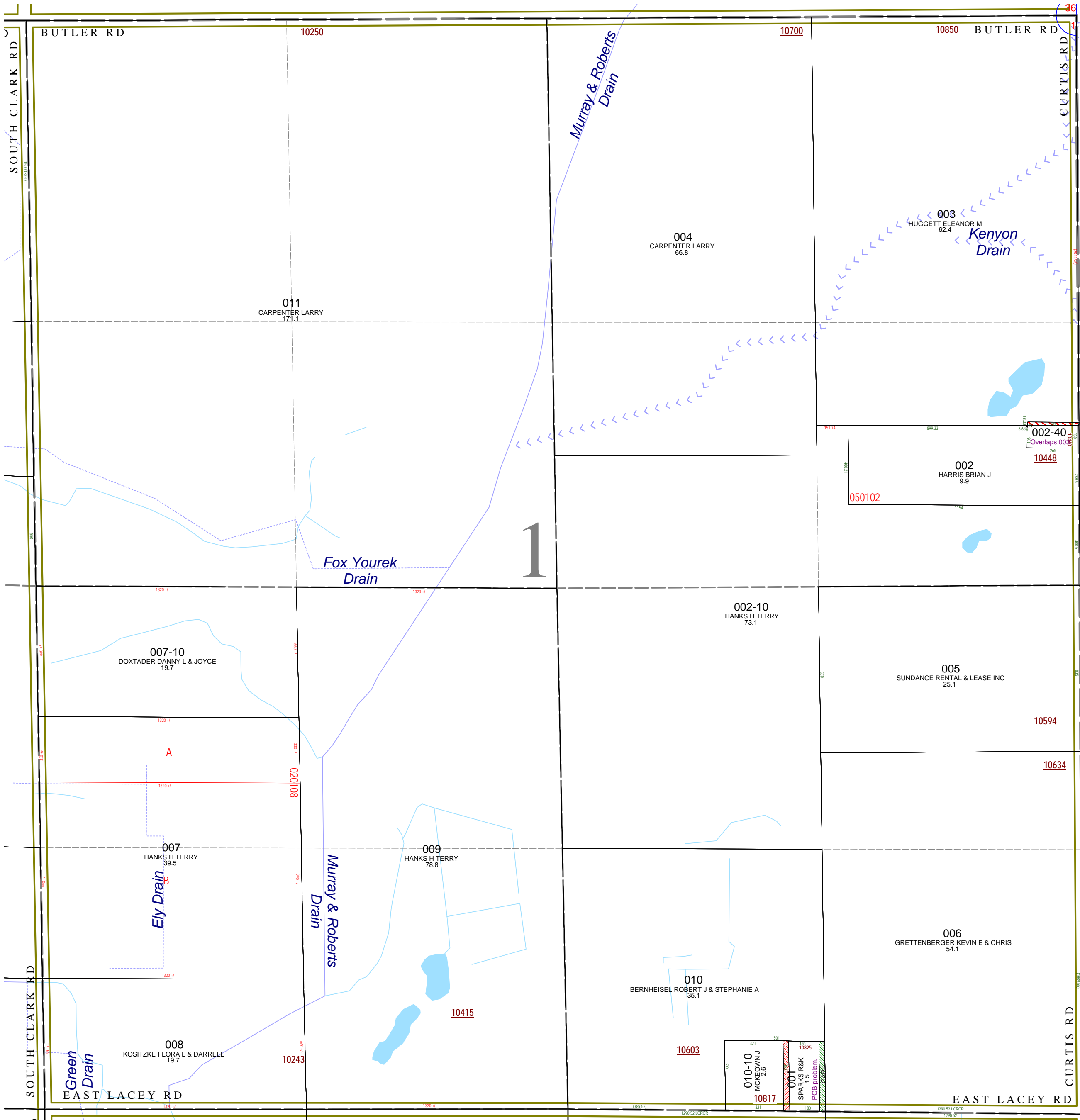
Section 1  
08-01-001-  
Scale 1" = 400'

This tax map was compiled for tax administration purposes from county and township records. It does not represent a land survey. Barry County Land Information Service 220 West State Street, Hastings MI 49058-4849 (269) 945-1292 or <http://www.barrycounty.org/>



April 1997  
Revised May 1998  
Revised June 1999  
Revised December 2000  
Revised December 2001  
Revised January 2003  
Revised May 2004  
Revised January 2006  
Revised July 2007  
Revised February 2009

All dimensions are from tax roll unless noted below.  
D = deeded M or S = surveyed  
SR = Surveyor's Record prior to 1915  
GLO = Government Land Office circa. 1830  
LCRCR = Land Corner Certificate



08-01-001-002-40 overlaps 003-00 as revealed by survey in split #050102. The overlap goes back to a deed in L.380-961 from Parr to Parr which claims to "occupation" line. This is not substantiated by any documentation, transfer or judgment against the person to the north.

08-01-001-001-00 overlaps 010-10 because the assumed distance of 80 rods to point of beginning was never actually measured. A survey by Robert Carr in 1999 surveys this distance as 1290.52 feet.