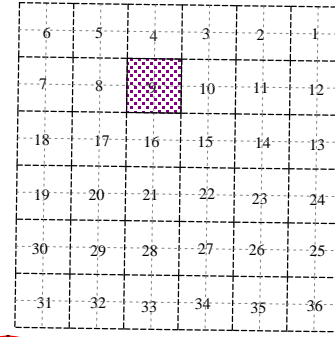
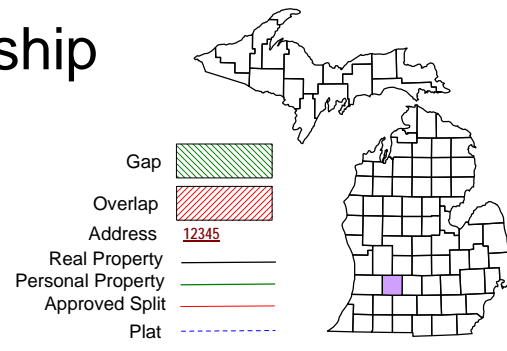
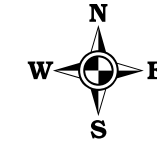


Assysria Township
T 1 N R 7 W
Barry County
Michigan



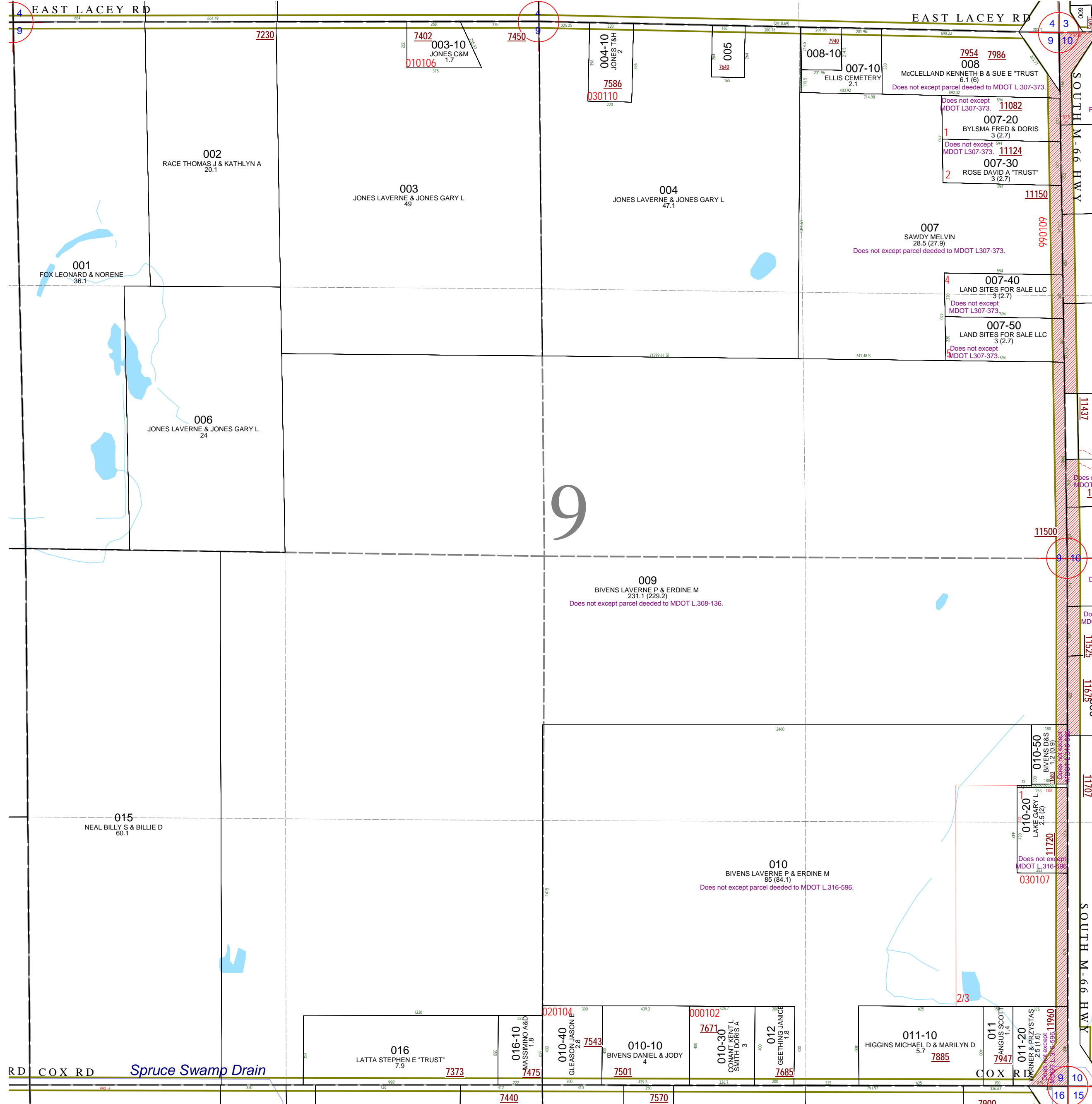
Section 9
08-01-009-
Scale 1" = 400'

This tax map was compiled for tax administration purposes from county and township records. It does not represent a land survey. Barry County Land Information Service 220 West State Street, Hastings MI 49058-4849 (269) 945-1292 or <http://www.barrycounty.org/>



April 1997
Revised May 1998
Revised June 1999
Revised December 2000
Revised December 2001
Revised January 2003
Revised May 2004
Revised January 2006
Revised July 2007
Revised February 2009

All dimensions are from tax roll unless noted below.
D = deeded M or S = surveyed
SR = Surveyor's Record prior to 1915
GLO = Government Land Office circa. 1830
LCRCR = Land Corner Certificate



08-01-009-008-00 should exclude property deeded to MDOT in L.307-373.

08-01-009-007-20 should exclude property deeded to MDOT in L.307-373.

08-01-009-007-30 should exclude property deeded to MDOT in L.307-373.

08-01-009-007-00 needs to include gap to the north and also should exclude property deeded to MDOT in L.307-373

08-01-009-007-40 should exclude property deeded to MDOT in L.307-373.

08-01-009-007-50 should exclude property deeded to MDOT in L.307-373.

08-01-009-009-00 should exclude property deeded to MDOT in L.308-136.

08-01-009-010-50 should exclude parcel sold to MDOT in L.316-569.

08-01-009-010-20 needs to include gap parcel and should exclude parcel sold to MDOT in L.316-569.

08-01-009-010-00 needs to include gap parcel and should exclude parcel sold to MDOT in L.316-569

08-01-009-011-20 should exclude parcel sold to MDOT in L.316-569.