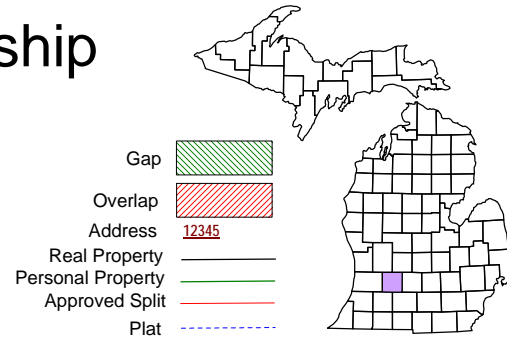
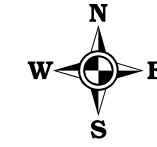


Assysia Township
T 1 N R 7 W
Barry County
Michigan



Grid table with numbers 1-36 in a 6x6 arrangement.

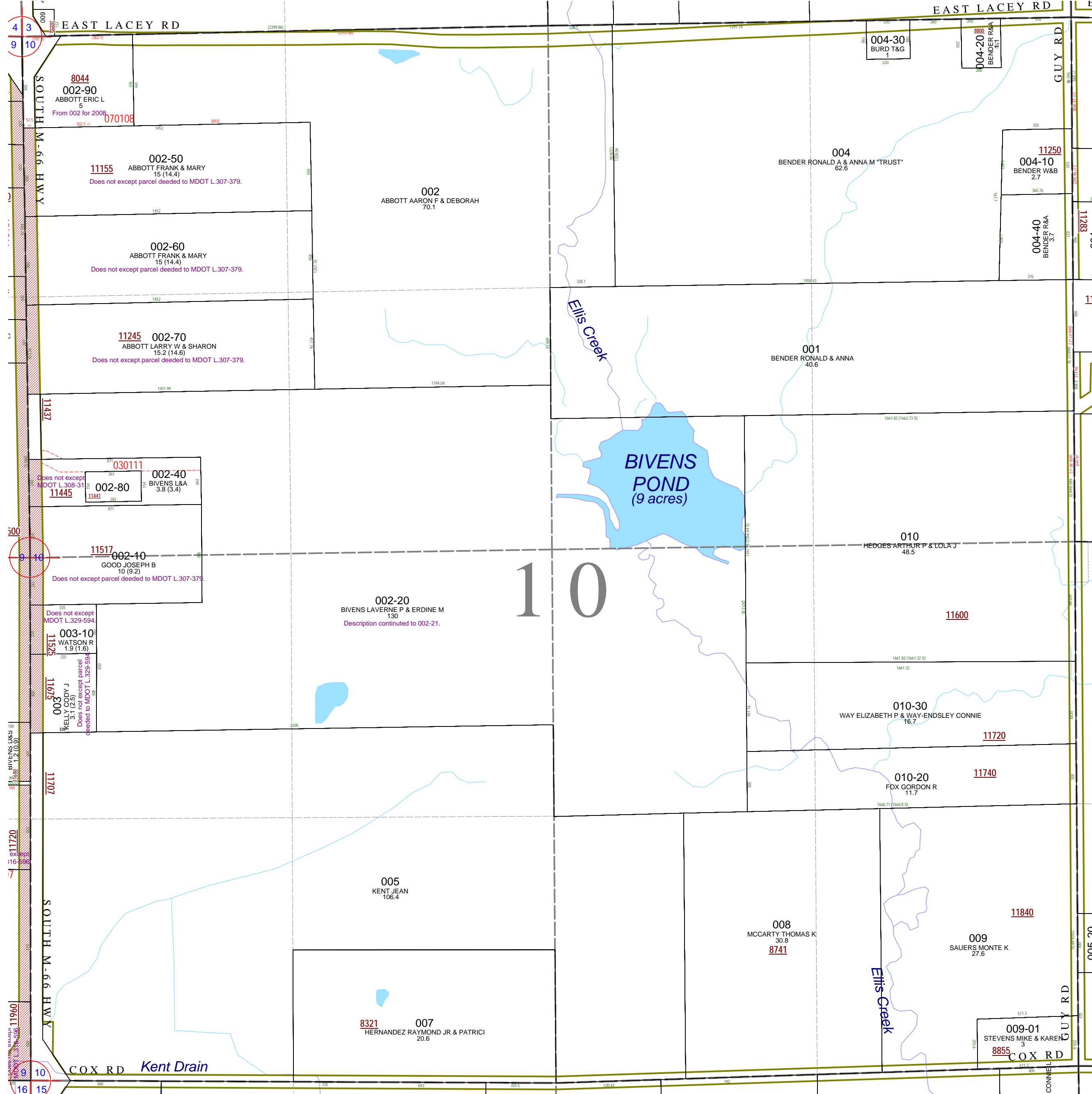
Section 10
08-01-010-
Scale 1" = 400'



April 1997
Revised May 1998
Revised June 1999
Revised December 2000
Revised December 2001
Revised January 2003
Revised May 2004
Revised January 2006
Revised July 2007
Revised February 2009

This tax map was compiled for tax administration purposes from county and township records. It does not represent a land survey. Barry County Land Information Service 220 West State Street, Hastings MI 49058-4849 (269) 945-1292 or http://www.barrycounty.org/

All dimensions are from tax roll unless noted below.
D = deeded M or S = surveyed
SR = Surveyor's Record prior to 1915
GLO = Government Land Office circa. 1830
LCRCR = Land Corner Certificate



08-01-010-002-50 should exclude property deeded to MDOT in L.307-379.

08-01-010-002-60 should exclude property deeded to MDOT in L.307-379.

08-01-010-002-70 should exclude property deeded to MDOT in L.307-379.

08-01-010-002-40 should exclude property deeded to MDOT in L.308-31.

08-01-010-002-10 should exclude property deeded to MDOT in L.308-31&L.329-524.

08-01-010-003-10 should exclude property deeded to MDOT in L.329-524.

08-01-010-003-00 should exclude property deeded to MDOT in L.329-524.