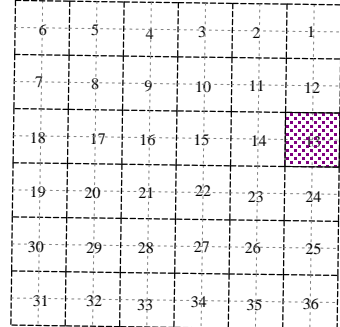
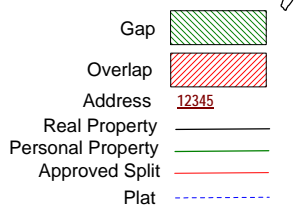
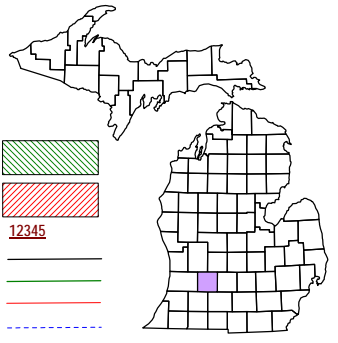


Assyria Township  
T 1 N R 7 W  
Barry County  
Michigan



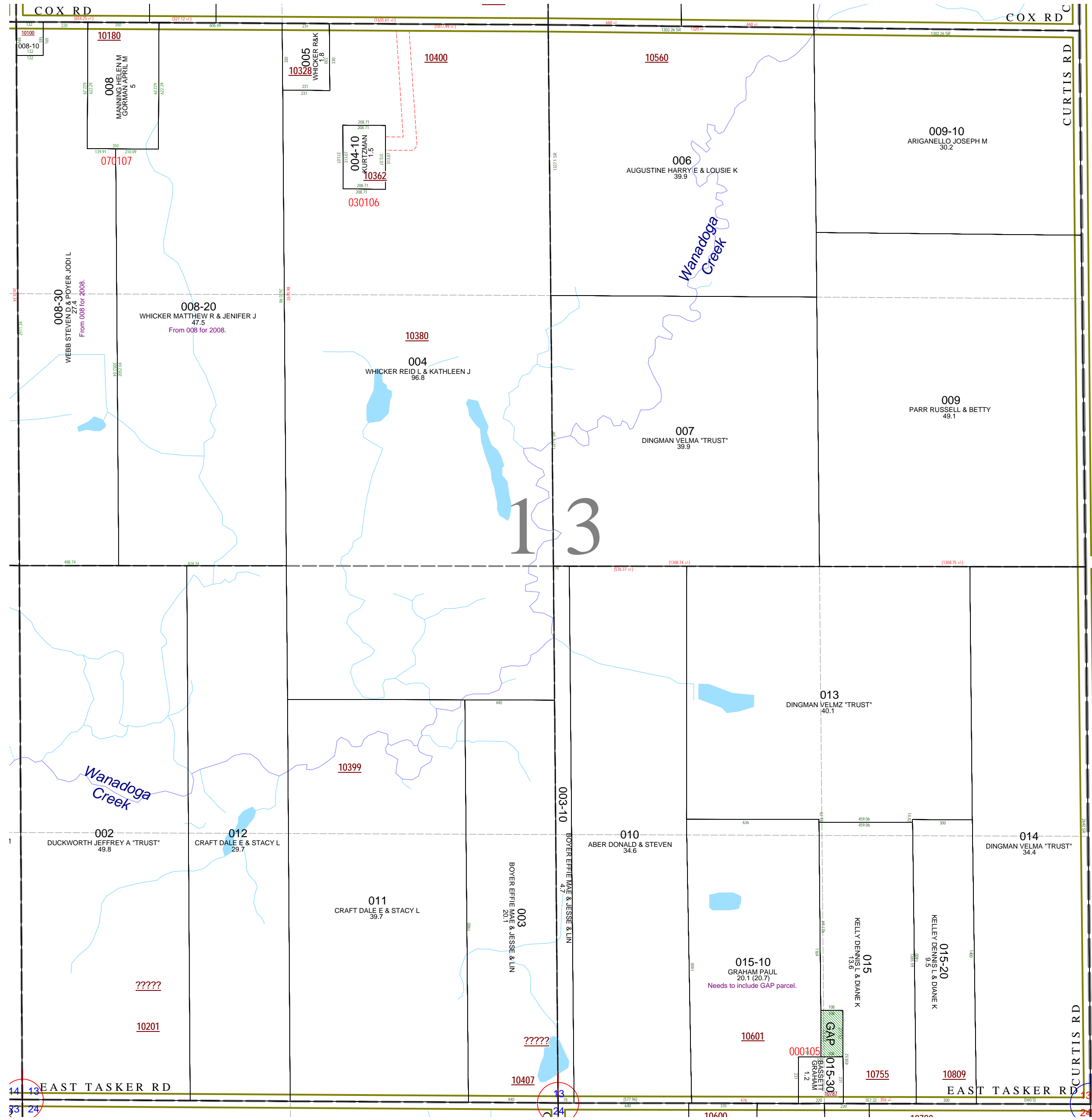
Section 13  
08-01-013-  
Scale 1" = 400'

This tax map was compiled for tax administration purposes from county and township records. It does not represent a land survey.  
Barry County Land Information Service  
220 West State Street, Hastings MI 49058-4849  
(269) 945-1292 or <http://www.barrycounty.org/>



April 1997  
Revised May 1998  
Revised June 1999  
Revised December 2000  
Revised December 2001  
Revised January 2003  
Revised May 2004  
Revised January 2006  
Revised July 2007  
Revised February 2009

All dimensions are from tax roll unless noted below.  
D = deduced M or S = surveyed  
SR = Surveyor's Record prior to 1915  
GLO = Government Land Office circa. 1830  
LCRCR = Land Corner Certificate



08-01-013-015-10 needs to include gap parcel to its southeast.