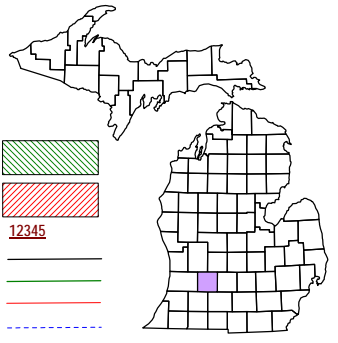
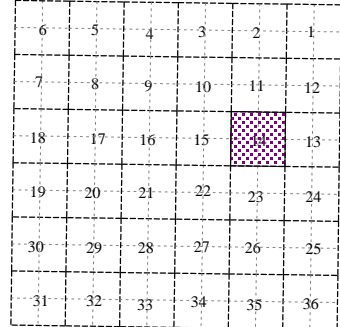


Assyria Township  
T 1 N R 7 W  
Barry County  
Michigan



- Gap
- Overlap
- Address
- Real Property
- Personal Property
- Approved Split
- Plat



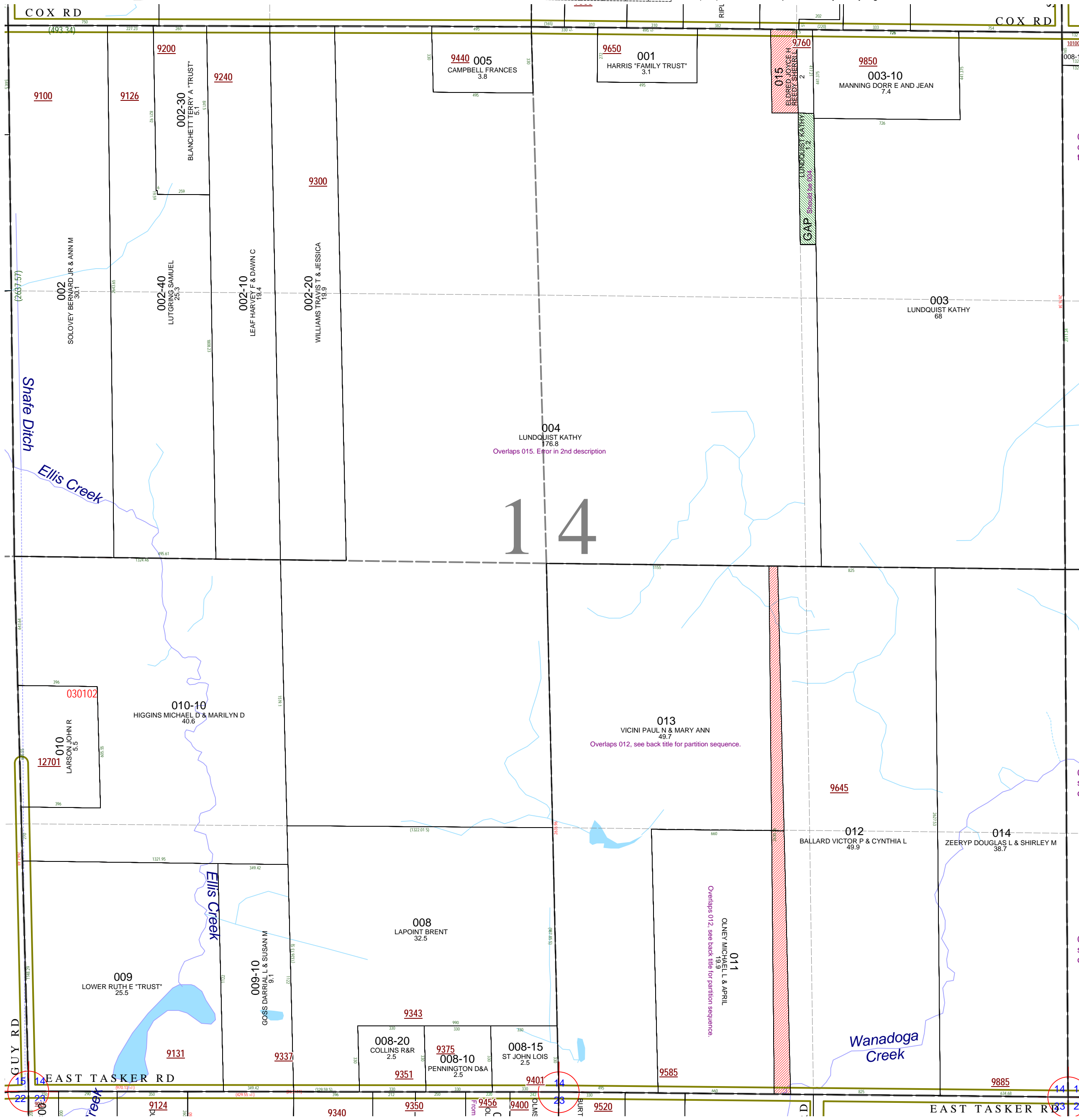
Section 14  
08-01-014-  
Scale 1"= 400'

This tax map was compiled for tax administration purposes from county and township records. It does not represent a land survey.  
Barry County Land Information Service  
220 West State Street, Hastings MI 49058-4849  
(269) 945-1292 or <http://www.barrycounty.org/>



- April 1997
- Revised May 1998
- Revised June 1999
- Revised December 2000
- Revised December 2001
- Revised January 2003
- Revised May 2004
- Revised January 2006
- Revised July 2007
- Revised February 2009

All dimensions are from tax roll unless noted below.  
D = deduced M or S = surveyed  
SR = Surveyor's Record prior to 1915  
GLO = Government Land Office circa. 1830  
LCRCR = Land Corner Certificate



08-01-014-004-00 has an error in its second description as to how it describes the 3 acres on the eastmost side of the property.

08-01-014-013-00 overlaps 012-00 because the south section line is very short. 012-00 was first out in chain of title

08-01-014-011-00 overlaps 012-00 because the south section line is very short. 012-00 was first out in chain of title

