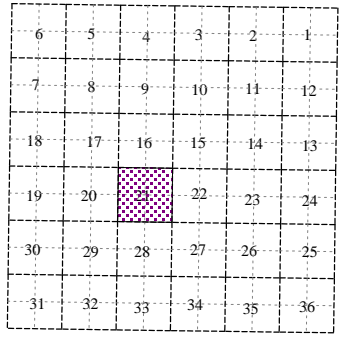
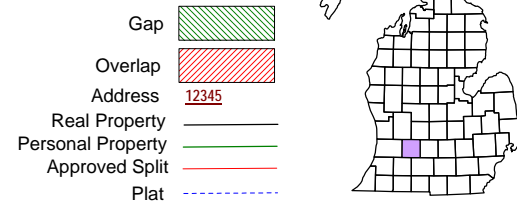
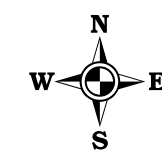


Assysia Township T 1 N R 7 W Barry County Michigan



Section 21 08-01-021- Scale 1" = 400'

This tax map was compiled for tax administration purposes from county and township records. It does not represent a land survey. Barry County Land Information Service 220 West State Street, Hastings MI 49058-4849 (269) 945-1292 or <http://www.barrycounty.org/>



April 1997
Revised May 1998
Revised June 1999
Revised December 2000
Revised December 2001
Revised January 2003
Revised May 2004
Revised January 2006
Revised July 2007
Revised February 2009

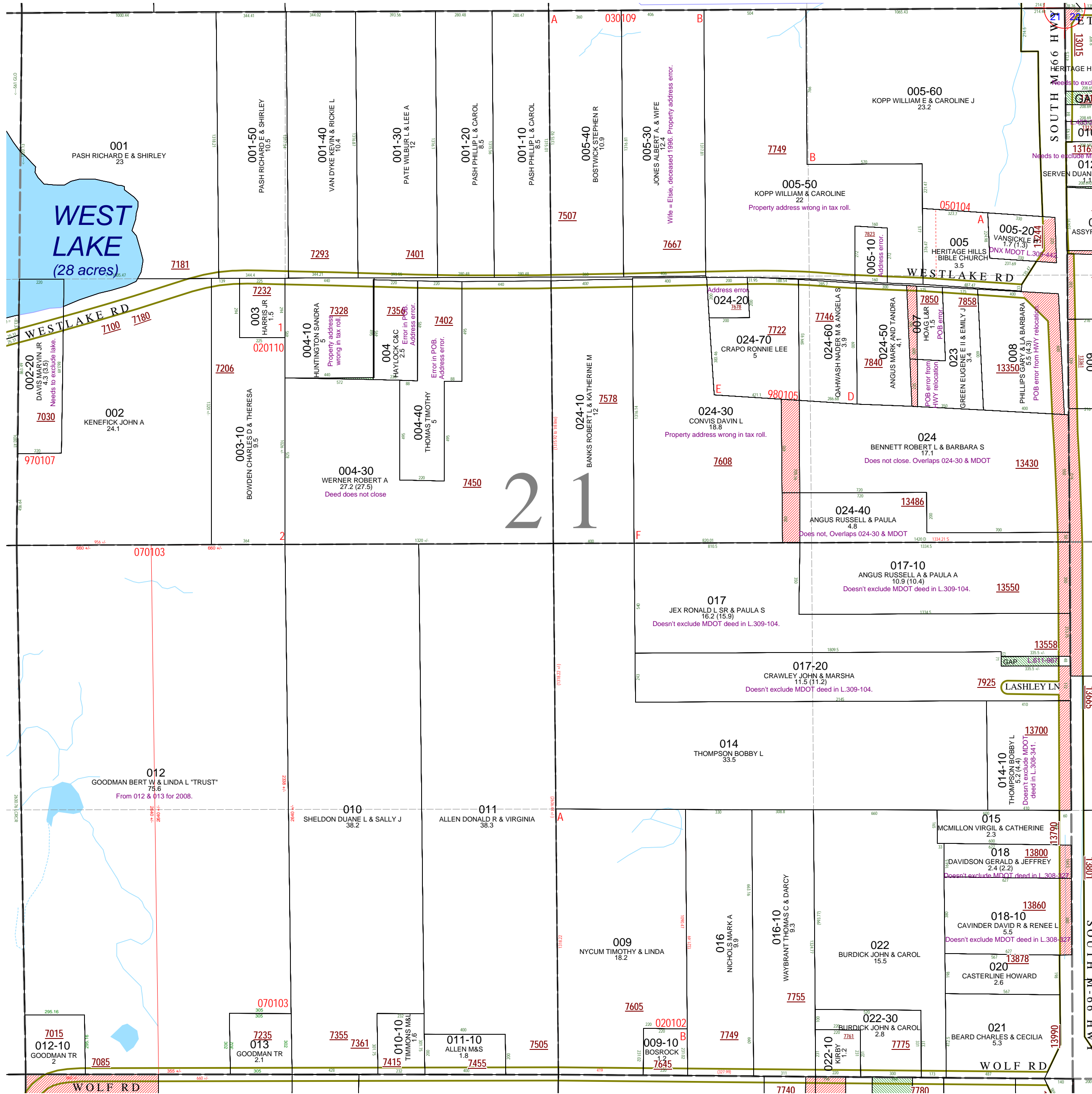
All dimensions are from tax roll unless noted below.
D = deeded M or S = surveyed
SR = Surveyor's Record prior to 1915
GLO = Government Land Office circa 1830
LCRCR = Land Corner Certificate

08-01-021-004-00 has an error in point of beginning because West Lake Rd does not run on the 1/8th line. See R#1011667.

08-01-021-002-20 needs to exclude land lying within the lake because the lake is "congressional" waters and not part of the patent.

08-01-021-004-40 has an error in point of beginning because West Lake Rd does not run on the 1/8th line. See R#1158564.

08-01-021-004-30 deed shows the property owned by Robert A Wesner. Also deeded description does not close in last two courses because distance to 1/8 line is not the same as the centerline of the road and the quarter section is short east-west.



08-01-021-005-20 should exclude property deeded to MDOT in L.309-442.

08-01-021-007-00 has point of beginning error from highway relocation. This parcel has been surveyed in L.1-117. It also needs to exclude parcel deeded to MDOT L.309-332.

08-01-021-008-00 has point of beginning error from highway relocation (1934 vs. 1966 c/l). It also needs to exclude parcel deeded to MDOT in L.309-332.

08-01-021-023-00 has point of beginning error from highway relocation (1934 vs. 1966 c/l).

08-01-021-024-00 overlaps 024-30, does not close and needs to exclude property deeded to MDOT in L.309-441

08-01-021-024-40 overlaps 024-30, does not close and needs to exclude property deeded to MDOT in L.309-441

08-01-021-017-00 should exclude property deeded to MDOT in L.309-104.

08-01-021-017-10 should exclude property deeded to MDOT in L.309-104.

GAP owned by Charles Stewart Lashley on a deed from Helen May Lashley in L.611-967. Gap was created when Charles K & Sandra L. Lashley in L.640-384 entered into a land contract with Charles Stewart Lashley and amended it in L.640-384 to create this gap.

08-01-021-017-20 should exclude property deeded to MDOT in L.309-104.

08-01-021-014-10 should exclude property deeded to MDOT in L.308-341.

08-01-021-018-00 should exclude property deeded to MDOT in L.308-327.

08-01-021-018-10 should exclude property deeded to MDOT in L.308-327.