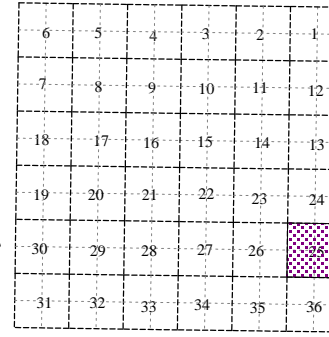
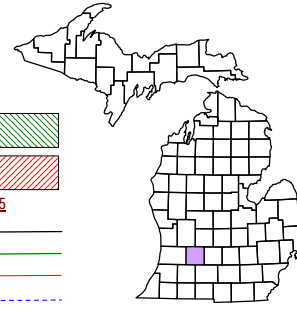
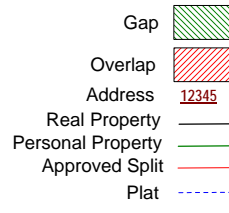
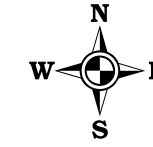


**Assyria Township**  
**T 1 N R 7 W**  
**Barry County**  
**Michigan**



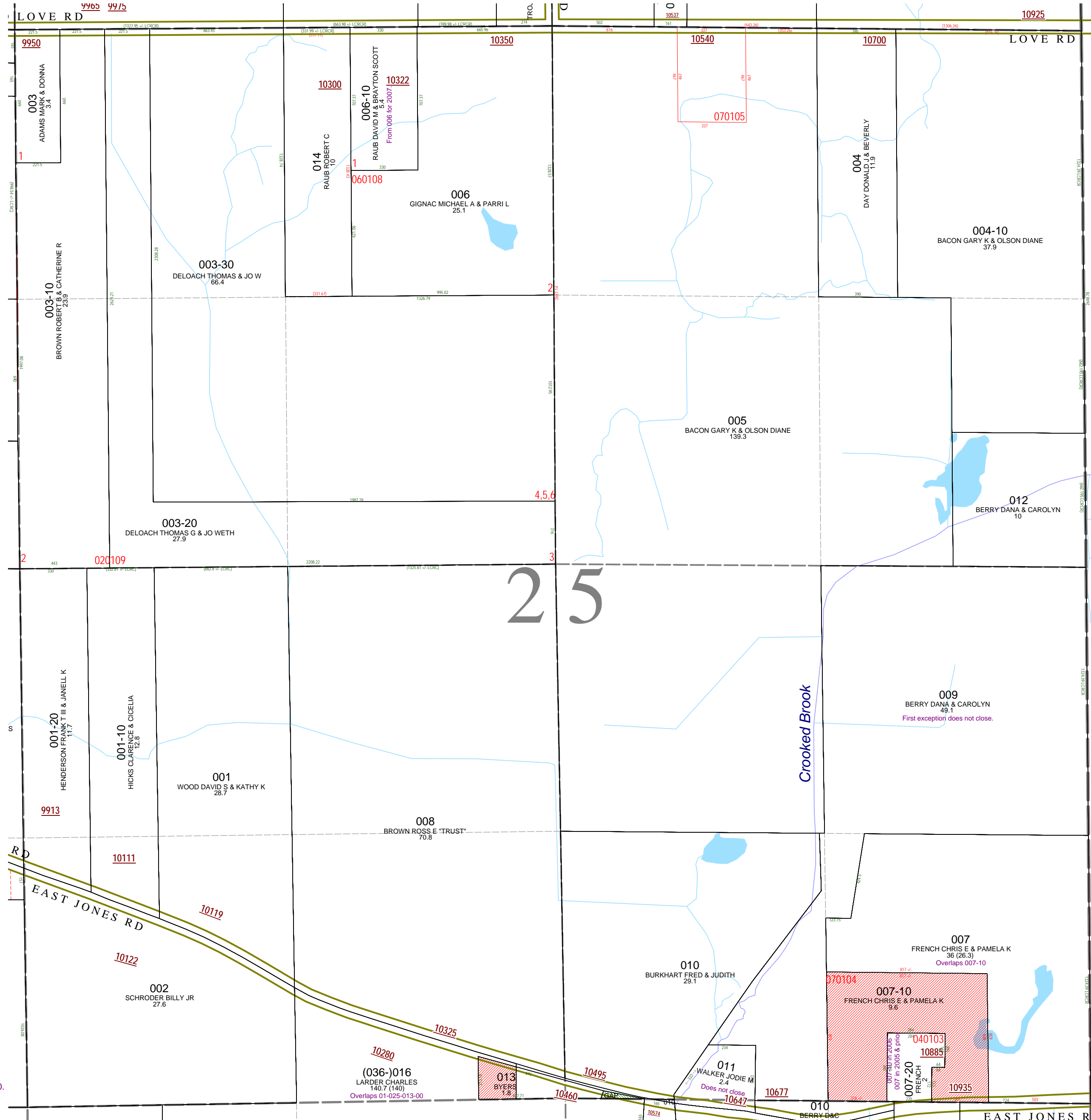
**Section 25**  
**08-01-025-**  
**Scale 1" = 400'**

This tax map was compiled for tax administration purposes from county and township records. It does not represent a land survey. Barry County Land Information Service, 220 West State Street, Hastings MI 49058-4849, (269) 945-1292 or <http://www.barrycounty.org/>



April 1997  
 Revised May 1998  
 Revised June 1999  
 Revised December 2000  
 Revised December 2001  
 Revised January 2003  
 Revised May 2004  
 Revised January 2006  
 Revised July 2007  
 Revised February 2009

All dimensions are from tax roll unless noted below.  
 D = deeded M or S = surveyed  
 SR = Surveyor's Record prior to 1915  
 GLO = Government Land Office circa. 1830  
 LCRCR = Land Corner Certificate



08-01-036-016-00 overlaps 08-01-025-013-00.

08-01-025-009-00 first exception does not close.

08-01-025-007-00 does not exclude split to 007-10.

08-01-025-011-00 does not close, nor does deed.