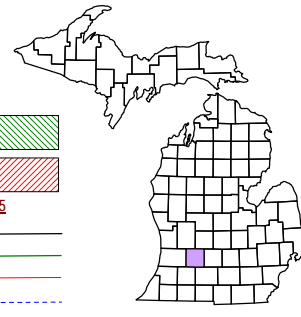


THORNAPPLE	IRVING	CARLTON	WOODLAND
YANKEE SPRINGS	RUTLAND	HASTINGS	CASTLETON
GRANGEVILLE	HOPE	BALTIMOR	MAPLE GROVE
PRAIRIEVILLE	DUTTON BARRY	JOHNSTOWN	

Assyria Township
T 1 N R 7 W
Barry County
Michigan

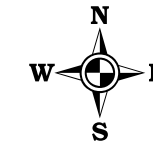
- Gap
- Overlap
- Address
- Real Property
- Personal Property
- Approved Split
- Plat



6	5	4	3	2	1
7	8	9	10	11	12
18	17	16	15	14	13
19	20	21	22	23	24
30	29	28	27	26	25
31	32	33	34	35	36

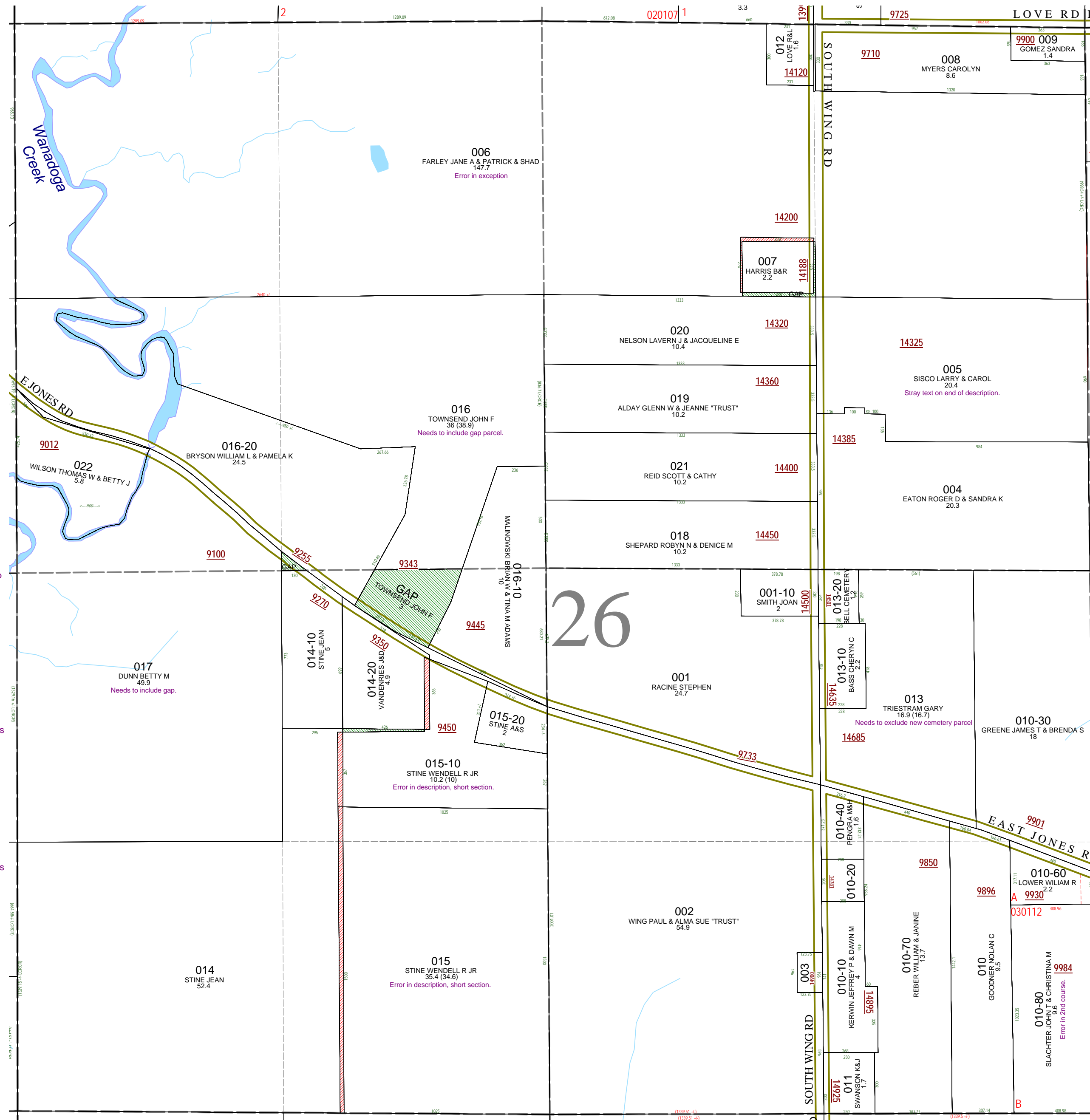
Section 26
08-01-026-
Scale 1" = 400'

This tax map was compiled for tax administration purposes from county and township records. It does not represent a land survey. Barry County Land Information Service, 220 West State Street, Hastings MI 49058-4849 (269) 945-1292 or <http://www.barrycounty.org/>



- April 1997
- Revised May 1998
- Revised June 1999
- Revised December 2000
- Revised December 2001
- Revised January 2003
- Revised May 2004
- Revised January 2006
- Revised July 2007
- Revised February 2009

All dimensions are from tax roll unless noted below.
D = deeded M or S = surveyed
SR = Surveyor's Record prior to 1915
GLO = Government Land Office circa. 1830
LCRCR = Land Corner Certificate



08-01-026-006-00 exceptions of 007 & 008 differ from deeded exceptions. See R#1083803.

08-01-026-005-00 has stray text on the end of the description

NEW owned by Sylvester & Bernita Cornwall in L.365-247 less sale in L.409-106 & L.410-186. From the way the properties are described the cemetery was supposedly expanded 5 feet on the south side and 30 feet on the east by Cornwall, but no deed was recorded.

08-01-026-013-00 description changed between L.365-247 and L.410-186 to supposedly enlarge the cemetery. See L.486-919.

08-01-026-010-80 has a typo, change "TH N 01 DEG 18' 44" W 1023.35 FT" to "TH N00°18'44"W 1023.35FT"

08-01-026-016-00 needs to include gap parcel lying in the N 1/2 of the SW 1/4.
08-01-026-017-00 needs to include the tiny gap on East Jones Rd.

08-01-026-015-10 overlaps 014-00 because it is a short section. See R#1059249.

08-01-026-015-00 overlaps 014-00 because it is a short section. See R#1059249.