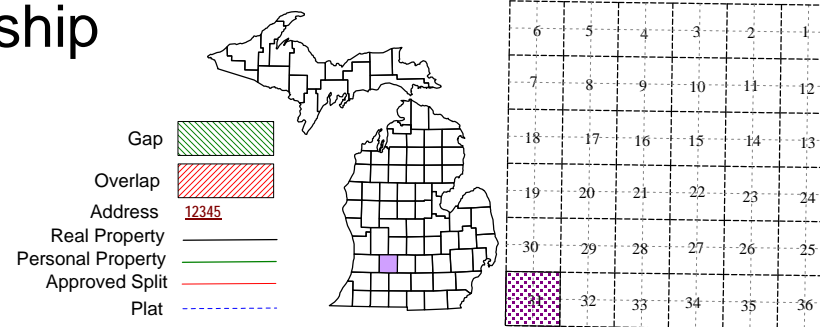
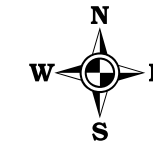


Assysia Township
T 1 N R 7 W
Barry County
Michigan



Section 31
08-01-031-
Scale 1"= 400'

This tax map was compiled for tax administration purposes from county and township records. It does not represent a land survey. Barry County Land Information Service 220 West State Street, Hastings MI 49058-4849 (269) 945-1292 or <http://www.barrycounty.org/>



April 1997
Revised May 1998
Revised June 1999
Revised December 2000
Revised December 2001
Revised January 2003
Revised May 2004
Revised January 2006
Revised July 2007
Revised February 2009

All dimensions are from tax roll unless noted below.
D = deeded M or S = surveyed
SR = Surveyor's Record prior to 1915
GLO = Government Land Office circa. 1830
LCRCR = Land Corner Certificate

08-01-031-022-00 needs to be more specific as to how that 60 acres was originally described. Original partition describes a parcel 990 feet north and south containing 60 acres "nearly".

GAP owned by Elias & Rachel Callahan in L.142-108.

08-01-031-013-00 has an error in point of beginning. See L.619-856.

08-01-031-010-00 needs to be more specific on the 60 acre exception to close the gap to the north. Original partition was 990ft N-S making 60 acres "nearly".

08-01-031-018-10 has type in first line after pob, change "TH S 01 SEC LI 15 RDS" to "TH S ON SEC LINE 15 RDS"

GAP owned by Royal W. Peake in L.54-21. The 1/4 acre out of the corner was deeded to Darryl & Zelma McLeod from Assysia No.8 School District. Theoretically this parcel reverted to the owner of the NE 1/4 NE 1/4 when the original School lease expired in 1910.

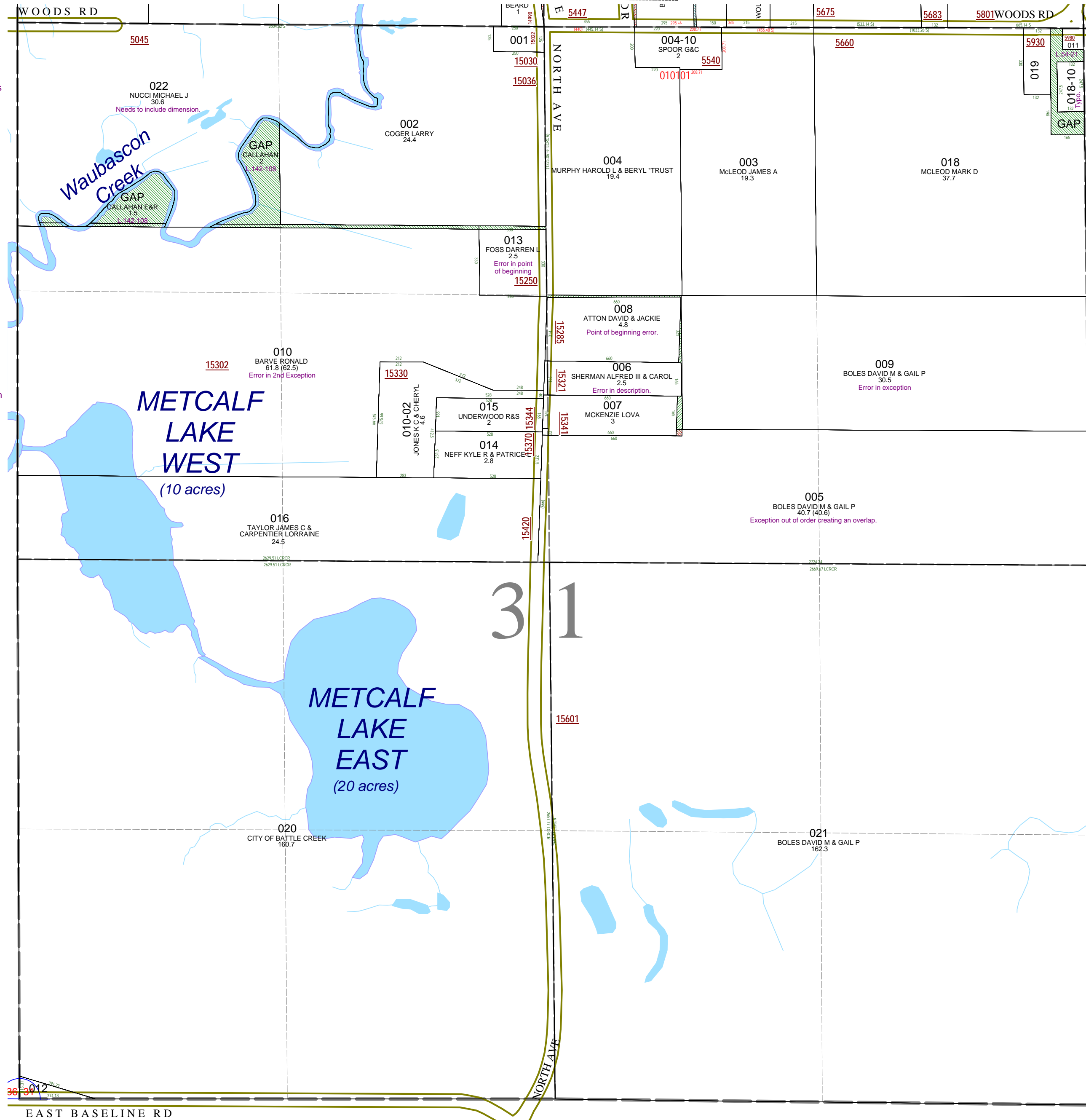
08-01-031-008-00 is missing its point of commencement

GAP owned by Frances V. Whittelsey in L.253-43 from Clara E. Brown and not passed on in L.383-486 to their trust (now Atton) or L.390-984 to Herrington.

08-01-031-006-00 has an incorrect description, correction reads from L.318-82.

08-01-031-006-00 has an incorrect description, correction reads from L.318-82.

08-01-031-005-00 has an exception out of order which changes its meaning. Exception should be after first description.



EAST BASELINE RD